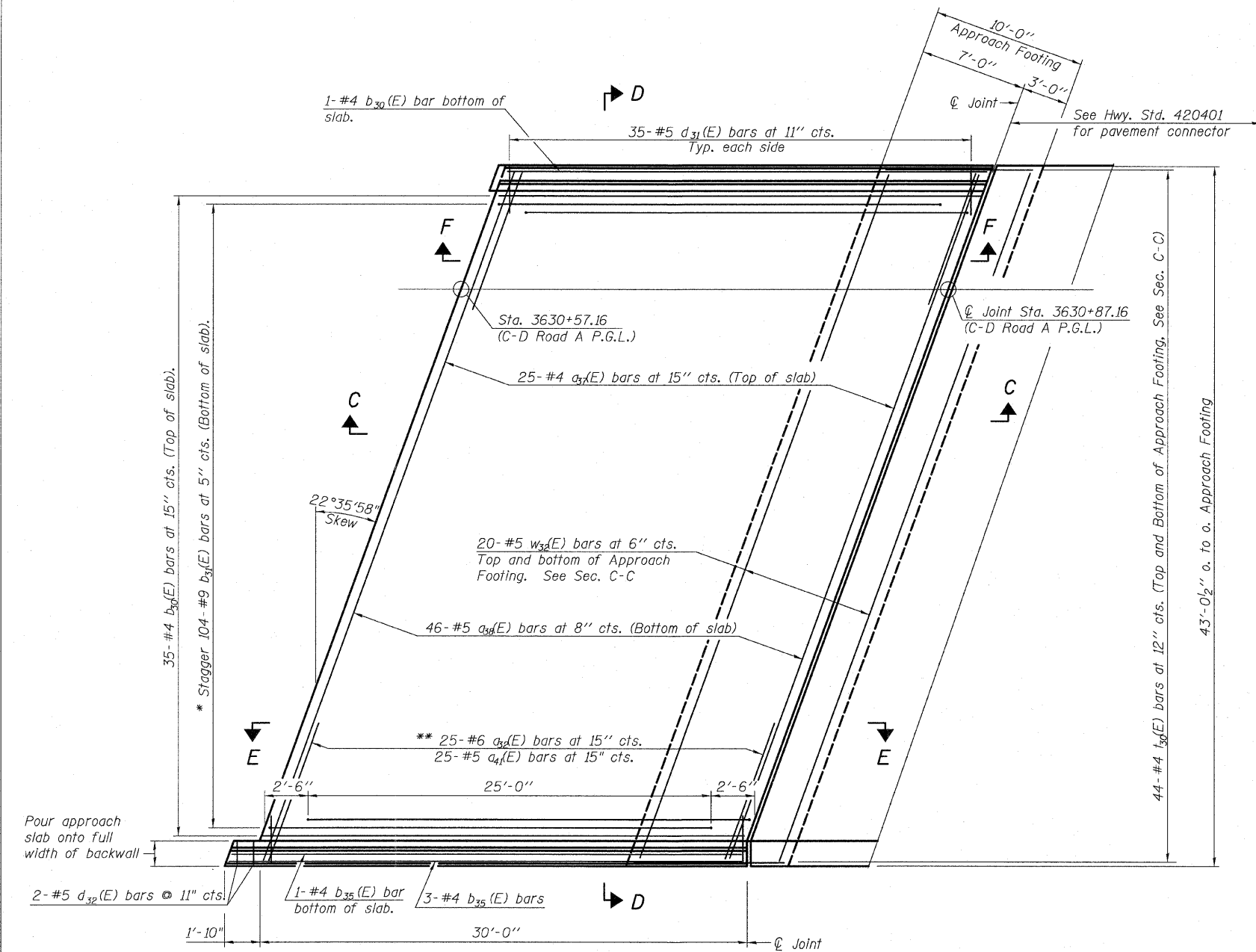


STATE OF ILLINOIS  
DEPARTMENT OF TRANSPORTATION

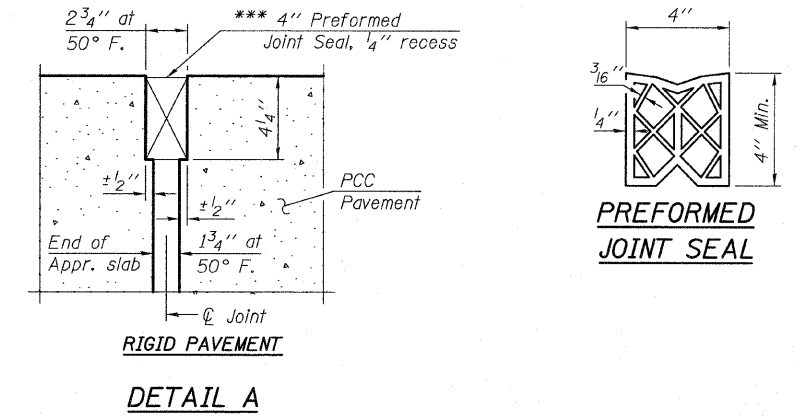
- Notes:  
1. See sheet 30 of 68 for Sections C-C & D-D and View E-E.  
2.  $a_3(E)$  and  $a_4(E)$  bar spacings measured along  $\text{C-Rdwy.}$   
3. Bars indicated thus 20x3-#5 etc. indicates 20 lines of bars with 3 lengths per line.



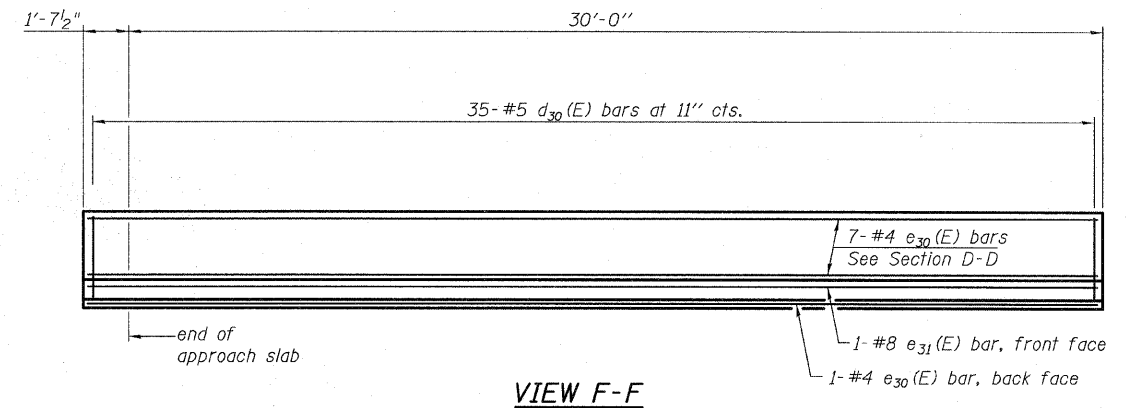
PLAN

- \* Tilt #9  $b_{31}(E)$  bars as required to maintain clearance.  
\*\* Space between  $a_{33}(E)$  bars, typ. each parapet.

\*\*\* Cost included with Concrete Superstructure.



RIGID PAVEMENT  
DETAIL A



VIEW F-F

EAST APPROACH SLAB C-D ROAD A - 1  
STRUCTURE NO. 016-1251

|                     |                  |           |      |              |   |         |         |              |           |     |
|---------------------|------------------|-----------|------|--------------|---|---------|---------|--------------|-----------|-----|
| TYLIN INTERNATIONAL | DESIGNED - JMA   | REVISIONS |      | SHEET NO. 29 | F.A.I. RTE.                                     | SECTION | COUNTY  | TOTAL SHEETS | SHEET NO. |     |
|                     | CHECKED - SP,    | NAME      | DATE |              | 68 SHEETS                                       | 57      | 1414.2B | COOK         | 516       | 274 |
|                     | DRAWN - JMA      |           |      |              | CONTRACT NO. 60J27                              |         |         |              |           |     |
|                     | CHECKED - SP,PDF |           |      |              | FED. ROAD DIST. NO. 1 ILLINOIS FED. AID PROJECT |         |         |              |           |     |
|                     | DATE - 03/18/10  |           |      |              |   |         |         |              |           |     |