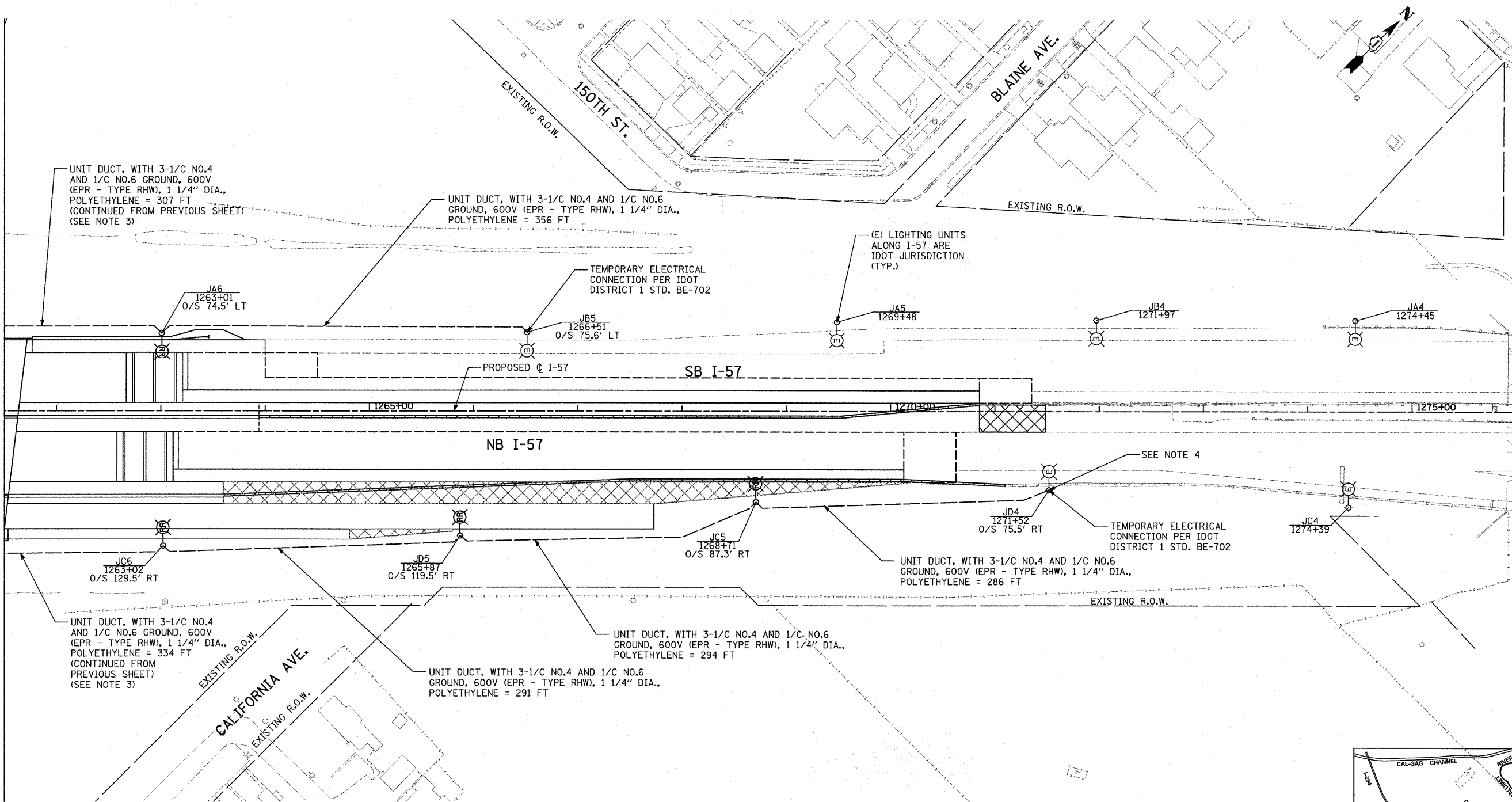
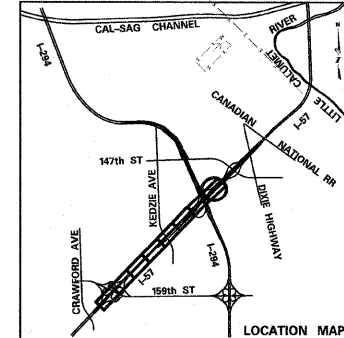
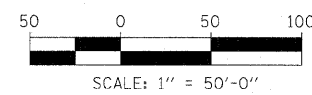


MATCHLINE STA. 1261+50.00



**NOTES:**

1. IDOT LIGHTING CONTROLLER "K" IS LOCATED AT I-57 STA. 1238+45 ALONG SB I-57.
2. IDOT LIGHTING CONTROLLER "J" IS LOCATED AT I-57 STA. 1286+79 ALONG NB I-57 ON 147TH STREET.
3. ADDITIONAL QUANTITY HAS BEEN PROVIDED TO INSTALL THE UNIT DUCT DOWN AND BACK UP THE EMBANKMENT AROUND THE RAMP B BRIDGE PORTAL.
4. PROTECTION OF EXISTING LIGHT POLE FOUNDATION SHALL BE INCLUDED IN THE COST OF THE ADJACENT DRAINAGE STRUCTURE INSTALLATION



<b>TYLIN INTERNATIONAL</b>	USER NAME =	DESIGNED - JDF	REVISED -
	PLOT SCALE =	DRAWN - JDF	REVISED -
	PLOT DATE =	CHECKED - DAJ	REVISED -
		DATE - 3/18/2010	REVISED -

**STATE OF ILLINOIS  
DEPARTMENT OF TRANSPORTATION**

<b>I-57 AT I-294 INTERCHANGE PROJECT PROPOSED LIGHTING PLANS - I-57</b>	
SCALE:	SHEET NO. 3 OF 4 SHEETS
STA. 1261+50 TO STA. 1276+00	

F.A.I. RTE. 57	SECTION 1414.2B	COUNTY COOK	TOTAL SHEETS 516	SHEET NO. 208
CONTRACT NO. 60J27			ILLINOIS FED. AID PROJECT	

**SHEET E8**