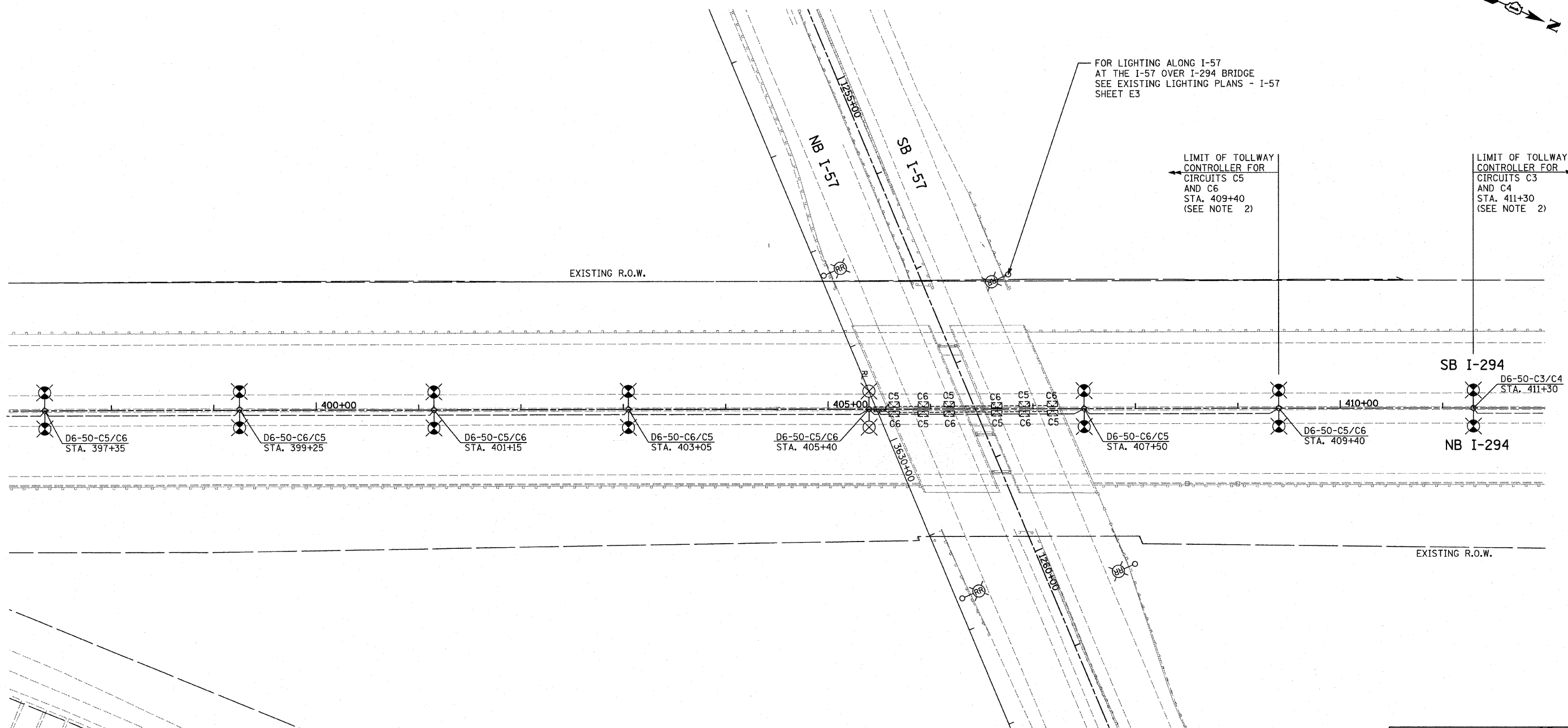
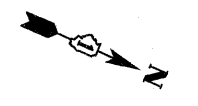
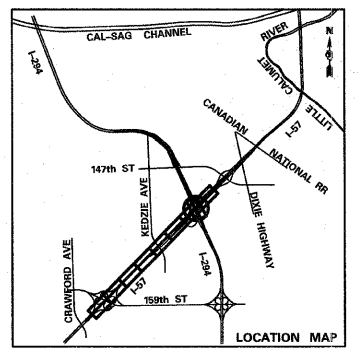
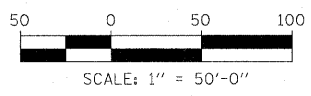


P:\60254057-294\road\elec\PLI_EX_LGT_SHT09.dgn



- NOTES:**
1. THE TOLLWAY LIGHTING CONTROLLER FOR CIRCUITS C5 AND C6 IS LOCATED AT I-294 STA. 387+92 ALONG SB I-294
 2. THE TOLLWAY LIGHTING CONTROLLER FOR CIRCUITS C3 AND C4 IS LOCATED AT I-294 STA. 443+98 ALONG NB I-294



SHEET E5

TYLIN INTERNATIONAL	USER NAME =	DESIGNED - JDF	REVISED -	STATE OF ILLINOIS DEPARTMENT OF TRANSPORTATION	I-57 AT I-294 INTERCHANGE PROJECT EXISTING LIGHTING PLAN - I-294			F.A.I. RTE. 57	SECTION 1414.2B	COUNTY COOK	TOTAL SHEETS 516	SHEET NO. 205
	PLOT SCALE =	CHECKED - DAJ	REVISED -		SCALE: 1" = 50'	SHEET NO. 4 OF 4 SHEETS	STA. 397+00 TO STA. 412+00	CONTRACT NO. 60J27				
	PLOT DATE =	DATE - 3/18/2010	REVISED -		FED. ROAD DIST. NO. ILLINOIS FED. AID PROJECT							

P:\60254057-294\road\elec\PLI_EX_LGT_SHT09.dgn

3/23/2010 7:01:54 AM