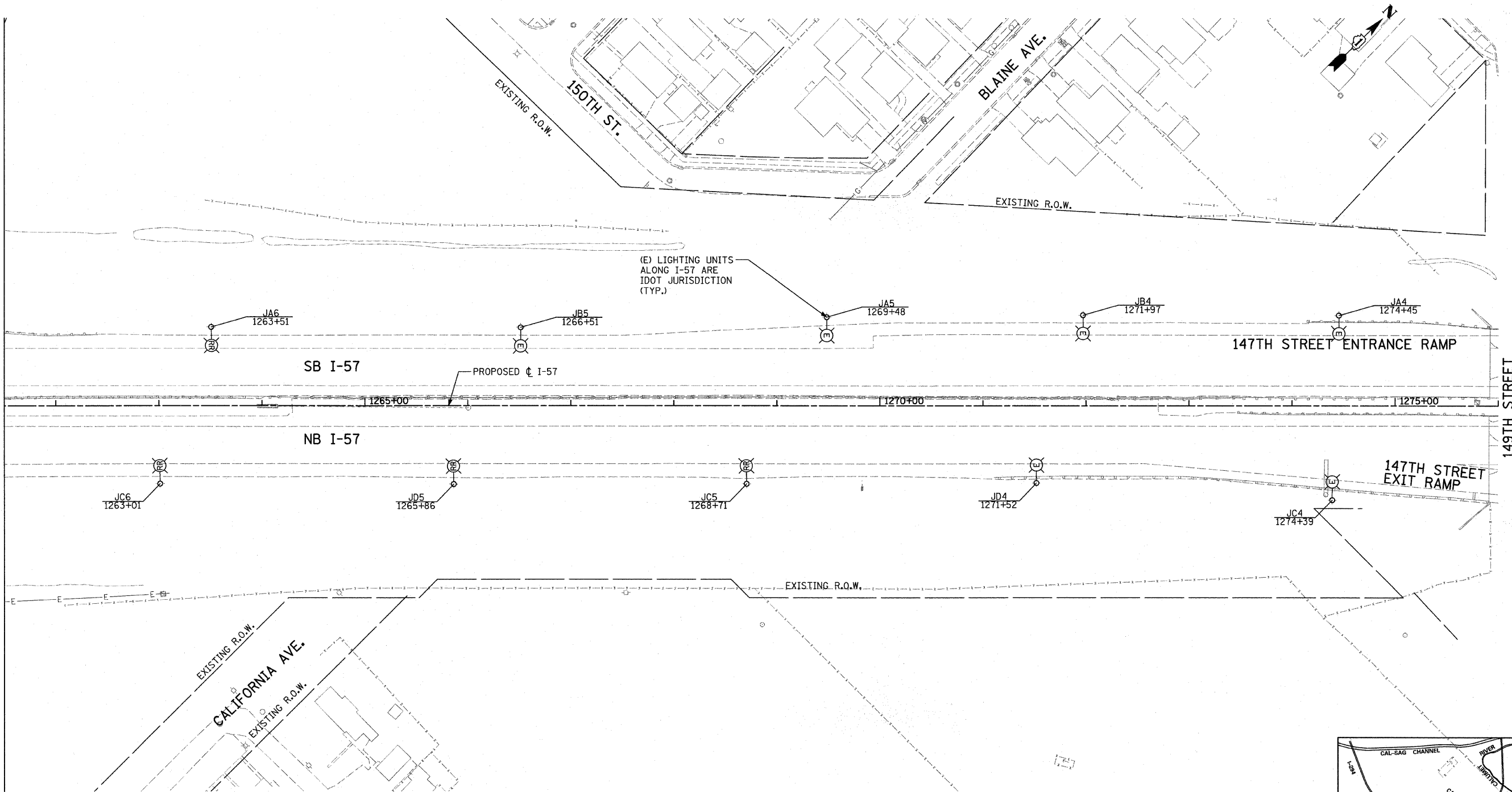
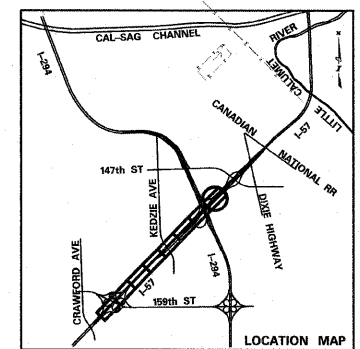
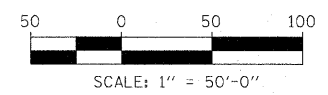


MATCHLINE STA. 1261+50.00



- NOTES:**
1. IDOT LIGHTING CONTROLLER "K" IS LOCATED AT I-57 STA. 1238+45 ALONG SB I-57.
 2. IDOT LIGHTING CONTROLLER "J" IS LOCATED AT I-57 STA. 1286+79 ALONG NB I-57 ON 147TH STREET.



SHEET E4

TYLIN INTERNATIONAL	USER NAME =	DESIGNED - JDF	REVISED -
	PLOT SCALE =	DRAWN - CAC	REVISED -
	PLOT DATE =	CHECKED - DAJ	REVISED -
		DATE - 3/18/2010	REVISED -

**STATE OF ILLINOIS
DEPARTMENT OF TRANSPORTATION**

**I-57 AT I-294 INTERCHANGE PROJECT
EXISTING LIGHTING PLANS - I-57**

SCALE: 1" = 50' SHEET NO. 3 OF 4 SHEETS STA. 1261+50 TO STA. 1276+00

F.A.I. RTE. 57	SECTION 1414.2B	COUNTY COOK	TOTAL SHEETS 516	SHEET NO. 204
FED. ROAD DIST. NO.		ILLINOIS FED. AID PROJECT		
CONTRACT NO. 60J27				