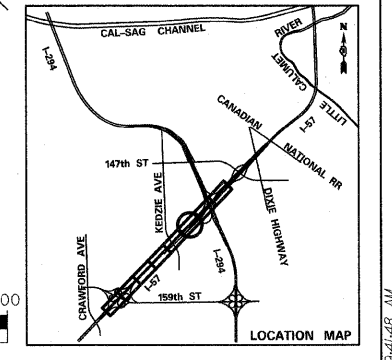
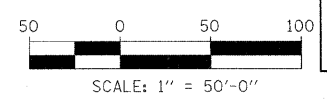


NOTE:
 ACCESS CONTROL FENCE SHALL BE INSTALLED AT ALL PIT LOCATIONS ADJACENT TO LOCAL FRONTAGE ROADS. A QUANTITY OF 80 LF IS PROVIDED FOR APPLICABLE LOCATIONS.

- LEGEND:**
- TEMPORARY CONCRETE BARRIER
 - TRAFFIC LANE
 - WORK ZONE
 - TEMPORARY PAVEMENT (INTERSTATE)
 - BARRICADE, TYPE III
 - DRUM WITH MONO-DIRECTIONAL STEADY BURNING LIGHT
 - ARROW BOARD



TYLIN INTERNATIONAL	USER NAME =	DESIGNED - DM	REVISED -
	PLOT SCALE =	DRAWN - DM	REVISED -
	PLOT DATE =	CHECKED - JPM	REVISED -
		DATE - 3/18/2010	REVISED -

**STATE OF ILLINOIS
 DEPARTMENT OF TRANSPORTATION**

**I-57 AT I-294 INTERCHANGE PROJECT
 MAINTENANCE OF TRAFFIC - I-57 STAGE 2**

SCALE: 1" = 50' SHEET NO. 6 OF 9 SHEETS STA. 1232+50 TO STA. 1247+00

F.A.I. RTE.	SECTION	COUNTY	TOTAL SHEETS	SHEET NO.
57	1414.2B	COOK	516	107
CONTRACT NO. 60J27				
FED. ROAD DIST. NO. ILLINOIS FED. AID PROJECT				