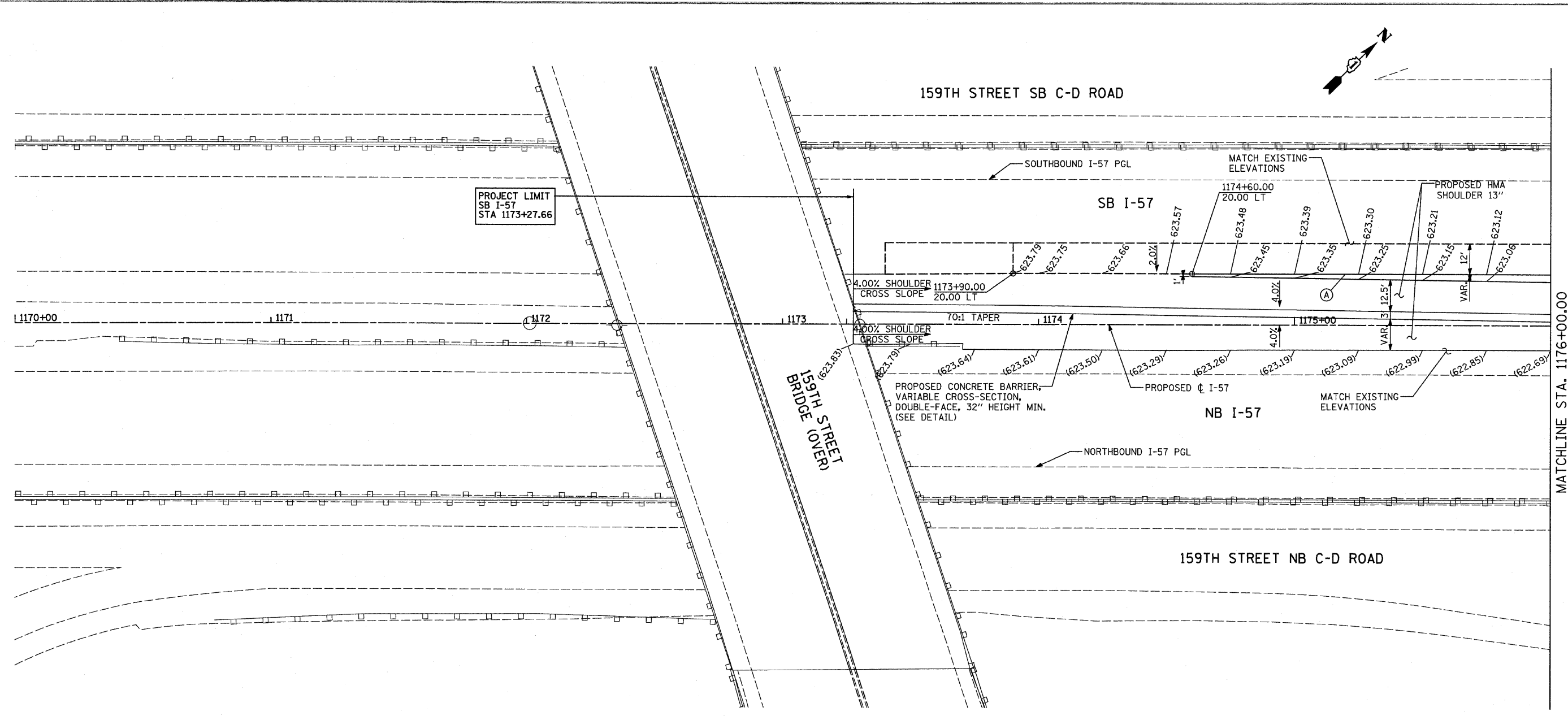


P:\602540(57-294)\road\p1.157 br\PI_PJE_SHT01.dgn



MATCHLINE STA. 1176+00.00

NOTES:

PAVEMENT ELEVATIONS GIVEN ARE AT 25' SPACING UNLESS OTHERWISE NOTED.

THE DIMENSIONS FOR THE PAVEMENT JOINTS ARE BASED ON THE CENTERLINE DISTANCE BETWEEN THE JOINTS.

ALL DEFORMED TIE BARS SHALL BE EPOXY COATED.

CONTRACTION JOINTS (UNDOWELED-SAWED OR GROOVED) SHALL BE PROVIDED ACROSS ALL PCC SHOULDERS. JOINT SPACING SHALL BE 20' C-C UNLESS OTHERWISE NOTED PER STANDARD 483001.

CONTRACTOR TO SMOOTHLY TRANSITION BETWEEN PROPOSED SHOULDER SPOTS GRADES FOR MEDIAN SAWTOOTH GRADING.

WHEN MEDIAN SPOT GRADES ARE NOT PROVIDED, MEDIAN SHOULDER CROSS-SLOPE SHALL BE 4.00% PER TYPICAL SECTIONS.

FOR JOINT DETAILS SEE STANDARD 420001

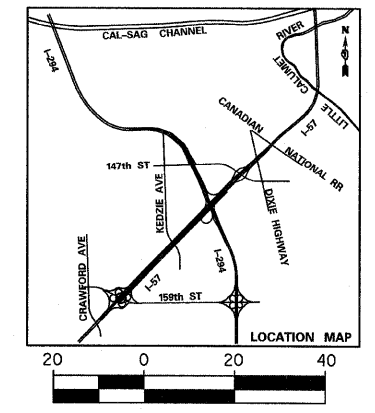
PGL FOR NORTHBOUND AND SOUTHBOUND PROFILES IS LOCATED 56' RT OR LT, RESPECTIVELY, FROM I-57 C

- LOW POINT. MEDIAN CROSS SLOPE = 6.00%
- HIGH POINT. MEDIAN CROSS SLOPE = 2.50%

LEGEND:

- (A) LONGITUDINAL CONSTRUCTION JOINT WITH NO. 6 DEFORMED TIE BAR (EPOXY COATED) DRILLED AND GROUTED INTO EXISTING, 24" LONG @ 24" C-C (INCLUDED IN THE COST OF THE ADJACENT CRC OR SHOULDER PAVEMENT).
- (B) LONGITUDINAL CONSTRUCTION JOINT WITH NO. 6 DEFORMED TIE BAR (EPOXY COATED), 30" LONG @ 30" C-C (INCLUDED IN THE COST OF CRC OR JOINTED PAVEMENT).
- (C) SAWED LONGITUDINAL JOINT WITH NO. 6 DEFORMED TIE BAR (EPOXY COATED), 30" LONG @ 30" C-C (INCLUDED IN THE COST OF CRC OR JOINTED PAVEMENT).
- (D) TRANSVERSE JOINT WITH NO. 8 DEFORMED TIE BAR (EPOXY COATED), 18" LONG @ 12" C-C (INCLUDED IN THE COST OF PCC PAVEMENT OR SHOULDERS).
- (E) SHOULDER CROSS-SLOPE TRANSITION LENGTH 62.5' 4.0% TO 1.5%
- (F) SHOULDER CROSS-SLOPE TRANSITION LENGTH 50.0' 4.0% TO 2.0%
- (G) SHOULDER CROSS-SLOPE TRANSITION LENGTH 37.5' 4.0% TO 2.5%
- (H) LUG SYSTEM COMPLETE, 48' OR 12'

- (620.44) EXISTING SPOT ELEVATION
- 620.44 PROPOSED SPOT ELEVATION
- TEMPORARY PAVEMENT - SEE CROSS OVER DETAILS FOR ELEVATIONS



TYLIN INTERNATIONAL	USER NAME =	DESIGNED - JDJ	REVISED - 4/29/2010	STATE OF ILLINOIS DEPARTMENT OF TRANSPORTATION	I-57 AT I-294 INTERCHANGE PROJECT PAVEMENT JOINTING AND ELEVATION PLAN		F.A.I. RTE. 57	SECTION 1414.2B	COUNTY COOK	TOTAL SHEETS 516	SHEET NO. 74	
	PLOT SCALE =	CHECKED - JPM	REVISED -		SCALE: 1" = 20'	SHEET NO. 1 OF 17 SHEETS	STA. 1170+00 TO STA. 1176+00	CONTRACT NO. 60J27		FED. ROAD DIST. NO. [ILLINOIS] FED. AID PROJECT		
	PLOT DATE =	DATE - 3/18/2010	REVISED -									