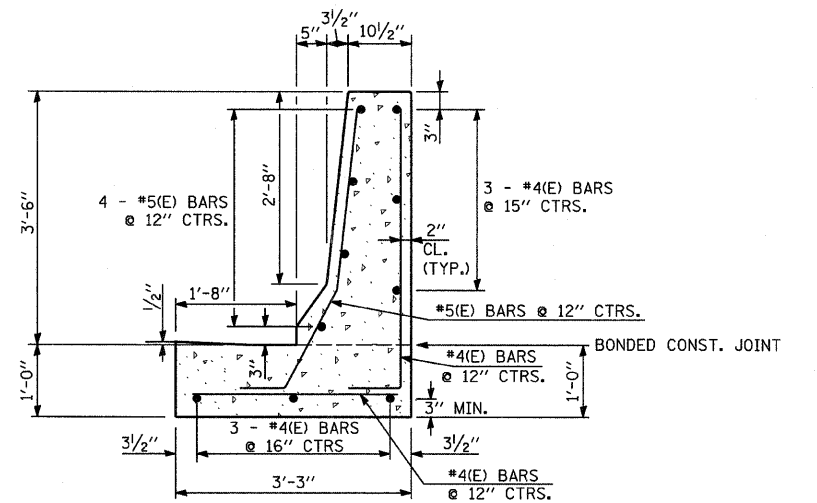


CONCRETE BARRIER,
PROPOSED CONCRETE BARRIER,
VARIABLE CROSS-SECTION, 32" HEIGHT,
& CONCRETE BARRIER BASE (SPECIAL)

* SEE PAVEMENT JOINTING AND ELEVATION SHEETS FOR SHOULDER CROSS SLOPE INFORMATION.

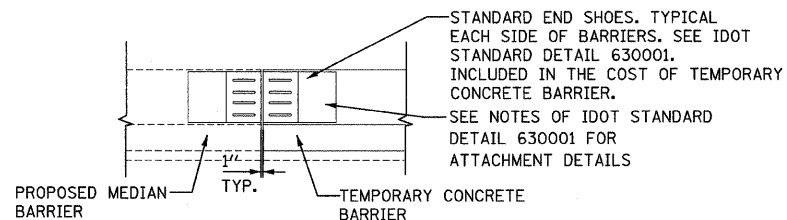


CONCRETE BARRIER, SINGLE FACE, TYPE F,
MODIFIED (ALONG I-294) &
CONCRETE BARRIER BASE, SINGLE FACE, TYPE F,
MODIFIED (ALONG I-294)

"SEE NOTES BELOW AND NOTES #1 - #7 FROM ISTHA STANDARD C3-01: SINGLE FACE REINFORCED CONCRETE BARRIER AND USE DOWEL BAR BENDING DIAGRAMS FOR TYPE F BARRIERS AS DEPICTED ON THE STANDARD"

NOTES:

1. REINFORCING BARS DESIGNATED "(E)" SHALL BE EPOXY COATED. ALL REINFORCING BARS INCLUDING DOWELS SHALL NOT BE PAID SEPARATELY, BUT INCLUDED IN THE COST ASSOCIATED WITH THE CONSTRUCTION OF CONCRETE BARRIERS (ALL TYPES).
2. ADDITIONAL FORMWORK, MATERIALS AND LABOR REQUIRED TO MODIFY THE BASE AND BARRIER WALL AS SHOWN SHALL NOT BE PAID FOR SEPARATELY, BUT SHALL BE INCLUDED IN THE COST OF THE ASSOCIATED PAY ITEM.



TO BE USED TO CLOSE THE MEDIAN BETWEEN CONTRACT CONSTRUCTION AND WHEREVER DESIGNATED IN THE PLANS TO TIE INTO THE PROPOSED PARAPET OR MEDIAN CONCRETE BARRIER.

THE TEMPORARY CONCRETE BARRIER OR TEMPORARY CONCRETE BARRIER (SPECIAL) SHALL BE INSTALLED SUCH THAT IT IS FLUSH WITH THE PROPOSED MEDIAN BARRIER ON THE APPROACH END AND STAGGERED ON THE END TO AVOID BLUNT END CONDITIONS.

BARRIER CONNECTION DETAIL

TYLIN INTERNATIONAL	USER NAME =	DESIGNED - CAC	REVISED - 4/29/2010	STATE OF ILLINOIS DEPARTMENT OF TRANSPORTATION	I-57 AT I-294 INTERCHANGE PROJECT CONCRETE BARRIER WALL DETAIL			F.A.I. RTE.	SECTION	COUNTY	TOTAL SHEETS	SHEET NO.
	PLOT SCALE =	DRAWN - CAC	REVISED -					57	1414.2B	COOK	516	60
	PLOT DATE =	CHECKED - JDF	REVISED -					CONTRACT NO. 60J27				
		DATE - 3/18/2010	REVISED -					FED. ROAD DIST. NO. ILLINOIS FED. AID PROJECT				
				SCALE: NTS	SHEET NO. 1 OF 1 SHEETS	STA.	TO STA.					