

OF SHEETS

INDEX OF SHEETS, SEE SHEET NO. 2

PROJECT LOCATED IN THE VILLAGE OF POSEN AND THE CITY OF MARIETTA

TRAFFIC DATA:

STATE 57:	ADT (2030)	DESIGN SPEED	POSTED SPEED
NORTHBOUND	47,130	60 MPH	55 MPH
SOUTHBOUND	44,880	60 MPH	55 MPH

PROJECT DESCRIPTION

THE PROPOSED IMPROVEMENT INCLUDES REMOVAL OF S.N. 016-1096 & S.N. 016-1097 AND REPLACEMENT WITH A NEW BRIDGE (S.N. 016-1251) AT I-57 OVER I-294, NEW CONSTRUCTION OF AN I-57 OVER FUTURE RAMP B BRIDGE (S.N. 016-1252), PAVEMENT WIDENING, MEDIAN RECONSTRUCTION, AND PARTIAL RESURFACING ALONG I-57.

DESIGN DESIGNATION

20-30 Interstate

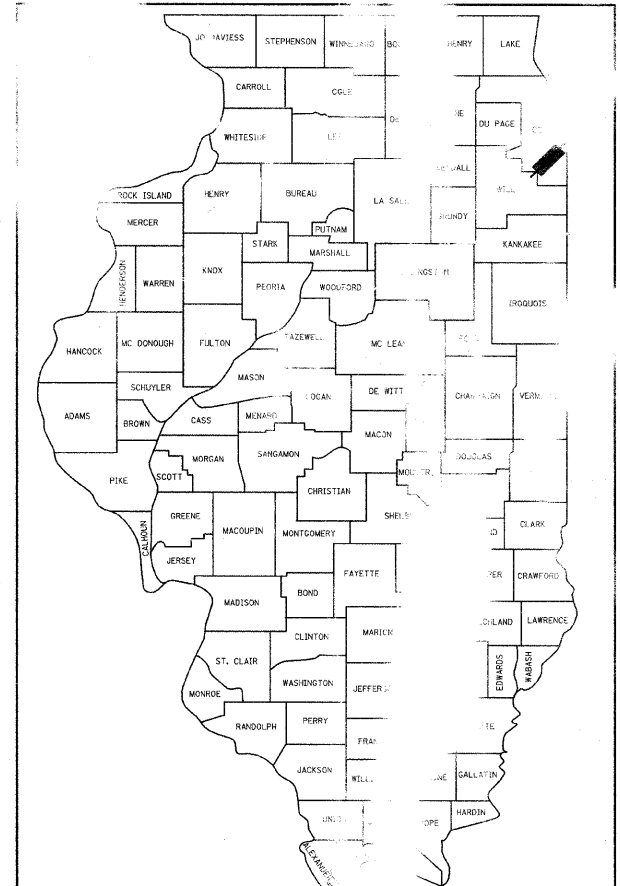
STATE OF ILLINOIS
DEPARTMENT OF TRANSPORTATION
DIVISION OF HIGHWAYS

**PROPOSED
HIGHWAY PLANS**

F.A.I. ROUTE 57 (INTERSTATE 57) OVER
I-294 (TRI-STATE TOLLWAY)
SECTION 1414.2B

**BRIDGE CONSTRUCTION AND RECONSTRUCTION AND
ROADWAY PAVEMENT WIDENING AND MEDIAN RECONSTRUCTION
COOK COUNTY**
C-91-217-10

F.A.I. RTE.	SECTION	COUNTY	TOTAL SHEETS	SHEET NO.
57	1414.2B	COOK	516	1
FED. ROAD DIST. NO.		TRACT NO.		60J2
C-91-217-10		516 + 21 = 537		



LOCATION OF SECTION INDICATED THUS: [Symbol]

STATE OF ILLINOIS
DEPARTMENT OF TRANSPORTATION
DIVISION OF HIGHWAYS

SUBMITTED MARCH 15, 2010

Diana M. O'Keefe
DEPUTY DIRECTOR OF HIGHWAYS, REGION ENGINEER

May 7, 2010
Scott E. Stitt, P.E.
ENGINEER OF DESIGN AND ENVIRONMENT

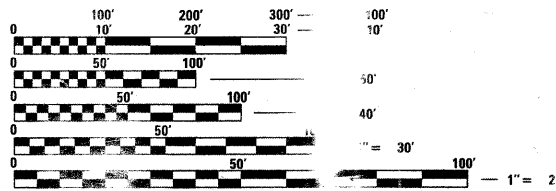
May 7, 2010
Christine M. Reed
DIRECTOR OF HIGHWAYS, CHIEF ENGINEER

Theodore E. Hamilton
THEODORE E. HAMILTON
REGISTERED PROFESSIONAL ENGINEER
No. 02-042142
CHICAGO, ILLINOIS
Expires 11-30-2011

Signed Theodore E. Hamilton
Date 3/15/10

For drawings 128 thru 161
180 thru 190

**PRINTED BY THE AUTHORITY
OF THE STATE OF ILLINOIS**

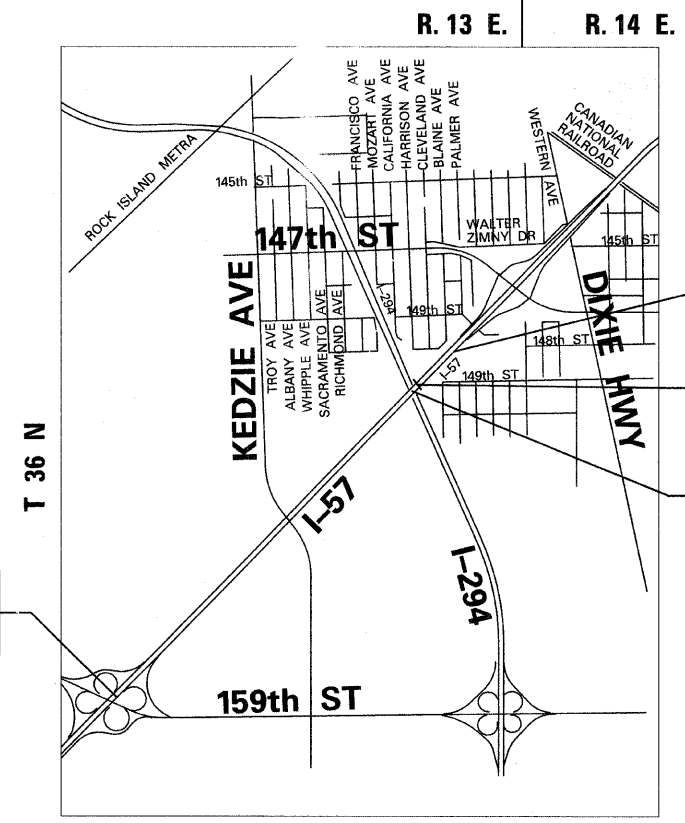


FULL SIZE PLANS HAVE BEEN PREPARED USING STANDARD ENGINEERING SCALES. REDUCED SIZE PLANS WILL NOT CONFORM TO STANDARD SCALES. MAKING MEASUREMENTS ON REDUCED PLANS USING THE ABOVE SCALES MAY BE USED.

JULIE
JOINT UTILIZATION INFORMATION FOR EXCAVATION
1-800-892-3333

PROJECT MANAGER: HELMUT PAZON (847) 705-4523

CONTRACT NO. 60J27



F.A.I. 57 PROJECT LIMIT
STA. 1173 + 27.66
(I-57 CENTERLINE)

F.A.I. 57 PROJECT LIMIT
STA. 1270 + 85.24
(I-57 CENTERLINE)

S.N. 016-1252

S.N. 016-1251

JOEL P. MARSHALL
62-054958
LICENSED PROFESSIONAL ENGINEER
STATE OF ILLINOIS

Signed Joel P. Marshall
Date 3/12/2010

Joel P. Marshall, P.E. Il. Lic. No. 62-054958
Expires 11-30-2010

EXCLUDES
128 thru 171
179 thru 190
246 thru 375

STATE OF ILLINOIS
SPIROS PANTAZIS
081-006448
CHICAGO, ILLINOIS
REGISTERED PROFESSIONAL ENGINEER

Signed Spiros Pantazis
Date 3/12/2010

Spiros Pantazis, P.E. Il. Lic. No. 081-006448
Expires 11-30-2010

For drawings 179, 246 thru 375

TOWNSHIP OF BREMEN

LOCATION MAP

GROSS LENGTH OF PROJECT = 9757.64 FT. = 1.85 MI.
NET LENGTH OF PROJECT = 9757.64 FT. = 1.85 MI.

TYLIN INTERNATIONAL
200 SOUTH WACKER DRIVE, SUITE 1400
CHICAGO, ILLINOIS 60606
TEL: 312-777-2900 FAX: 312-777-3305