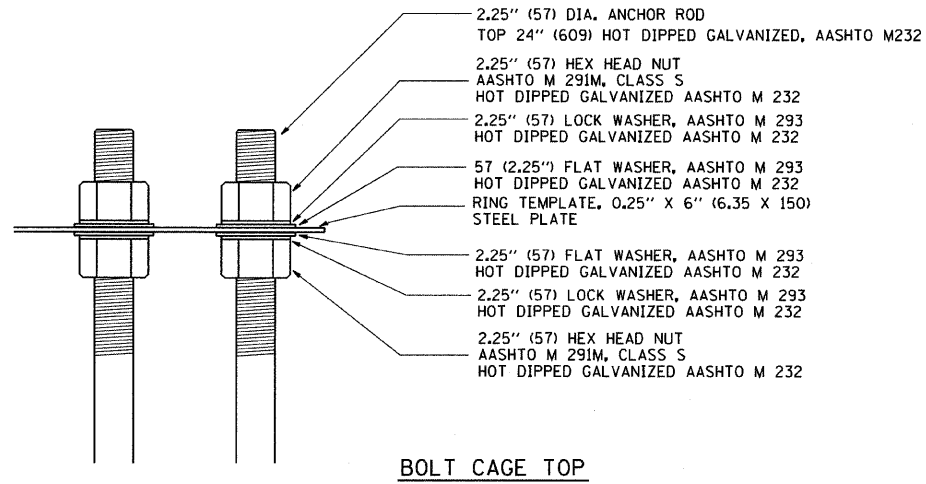
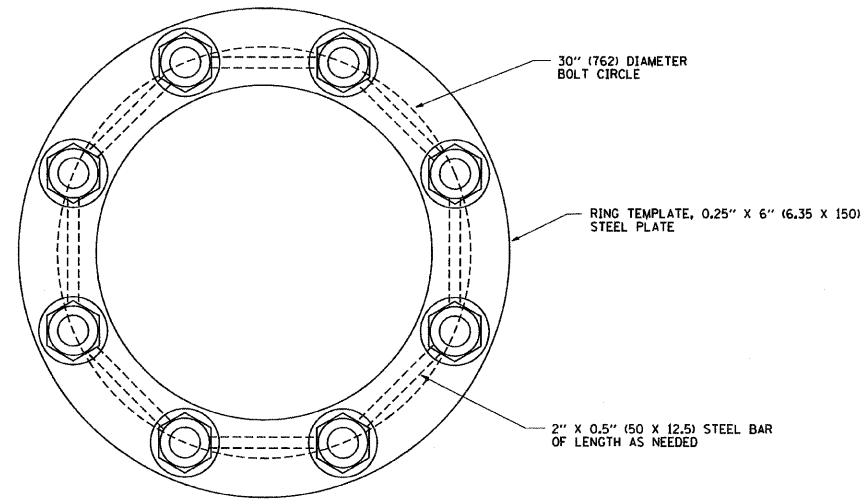


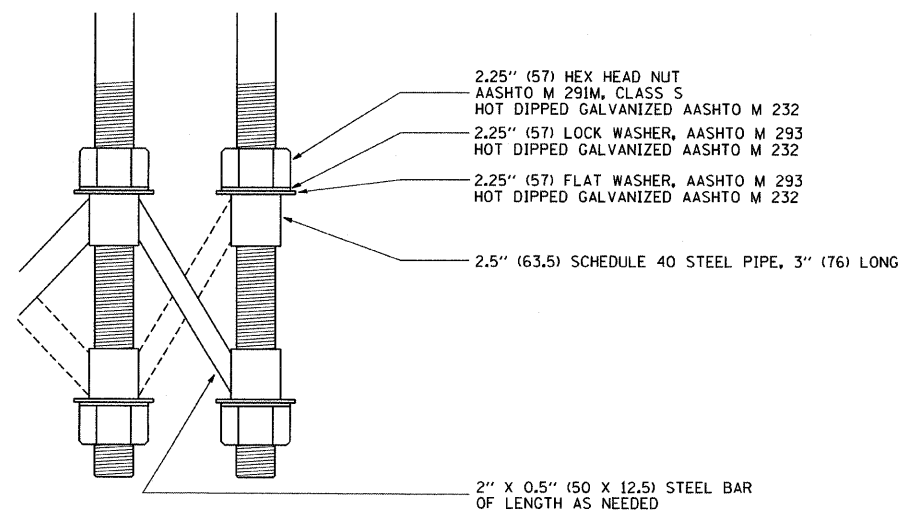
**ANCHOR BOLT CAGE**



**BOLT CAGE TOP**



**SECTION A-A**



**BOLT CAGE BOTTOM**

**NOTES**

1. ALL DIMENSIONS IN INCHES (MILLIMETERS) UNLESS OTHERWISE SHOWN
2. ANCHOR RODS SHALL BE STRAIGHT AND SHALL BE ACCORDING TO AASHTO M 314 OR ASTM F1554, GRADE 725 (GRADE 105) AND GALVANIZED ACCORDING TO ARTICLE 1006.09.
3. ANCHOR ROD INFORMATION SHALL BE SUBMITTED FOR APPROVAL AND SHALL BE FULLY COORDINATED WITH TOWER MANUFACTURERS REQUIREMENTS.

FILE NAME = W:\dstatd\22x34\be501.dgn	USER NAME = geglianobt	DESIGNED -	REVISED - R. TOMSONS 04-22-02
		DRAWN -	REVISED -
	PLOT SCALE = 50.000 ' / IN.	CHECKED -	REVISED -
	PLOT DATE = 1/4/2008	DATE -	REVISED -

**STATE OF ILLINOIS  
DEPARTMENT OF TRANSPORTATION**

<b>HIGH MAST LIGHT TOWER</b>		F.A. RTE.	SECTION	COUNTY	TOTAL SHEETS	SHEET NO.
<b>90 FT TO 120 FT (27 m TO 36 m) FOUNDATION DETAIL</b>		57	1414.28	COOK	516	210F
SCALE: NONE		SHEET NO. 2 OF 2 SHEETS		STA.	TO STA.	
		FED. ROAD DIST. NO. 1		ILLINOIS FED. AID PROJECT		

CONTRACT NO. 60J27