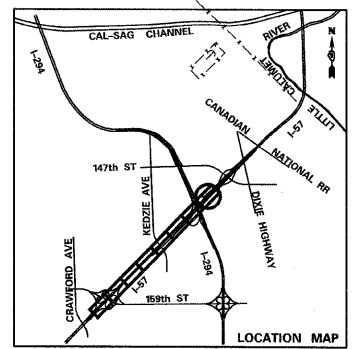
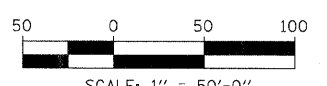


MATCHLINE STA. 1261+50.00

MATCHLINE - END OF WORK ZONE

LEGEND:

- TEMPORARY CONCRETE BARRIER
- TRAFFIC LANE
- WORK ZONE
- TEMPORARY PAVEMENT (INTERSTATE)
- BARRICADE, TYPE III
- DRUM WITH MONO-DIRECTIONAL STEADY BURNING LIGHT
- ARROW BOARD



TYLIN INTERNATIONAL	USER NAME =	DESIGNED - DM	REVISED ADDENDUM 1 05/24/10
	PLOT SCALE =	DRAWN - DM	REVISED -
	PLOT DATE =	CHECKED - JPM	REVISED -
		DATE - 3/18/2010	REVISED -

**STATE OF ILLINOIS
DEPARTMENT OF TRANSPORTATION**

**I-57 AT I-294 INTERCHANGE PROJECT
MAINTENANCE OF TRAFFIC - I-57 STAGE 1**

SCALE: 1"=50' SHEET NO. 3 OF 3 SHEETS STA. 1261+50 TO STA.1276+00

F.A.I. RTE. 57	SECTION 1414.2B	COUNTY COOK	TOTAL SHEETS 516	SHEET NO. 98
FED. ROAD DIST. NO. ILLINOIS FED. AID PROJECT			CONTRACT NO. 60J27	