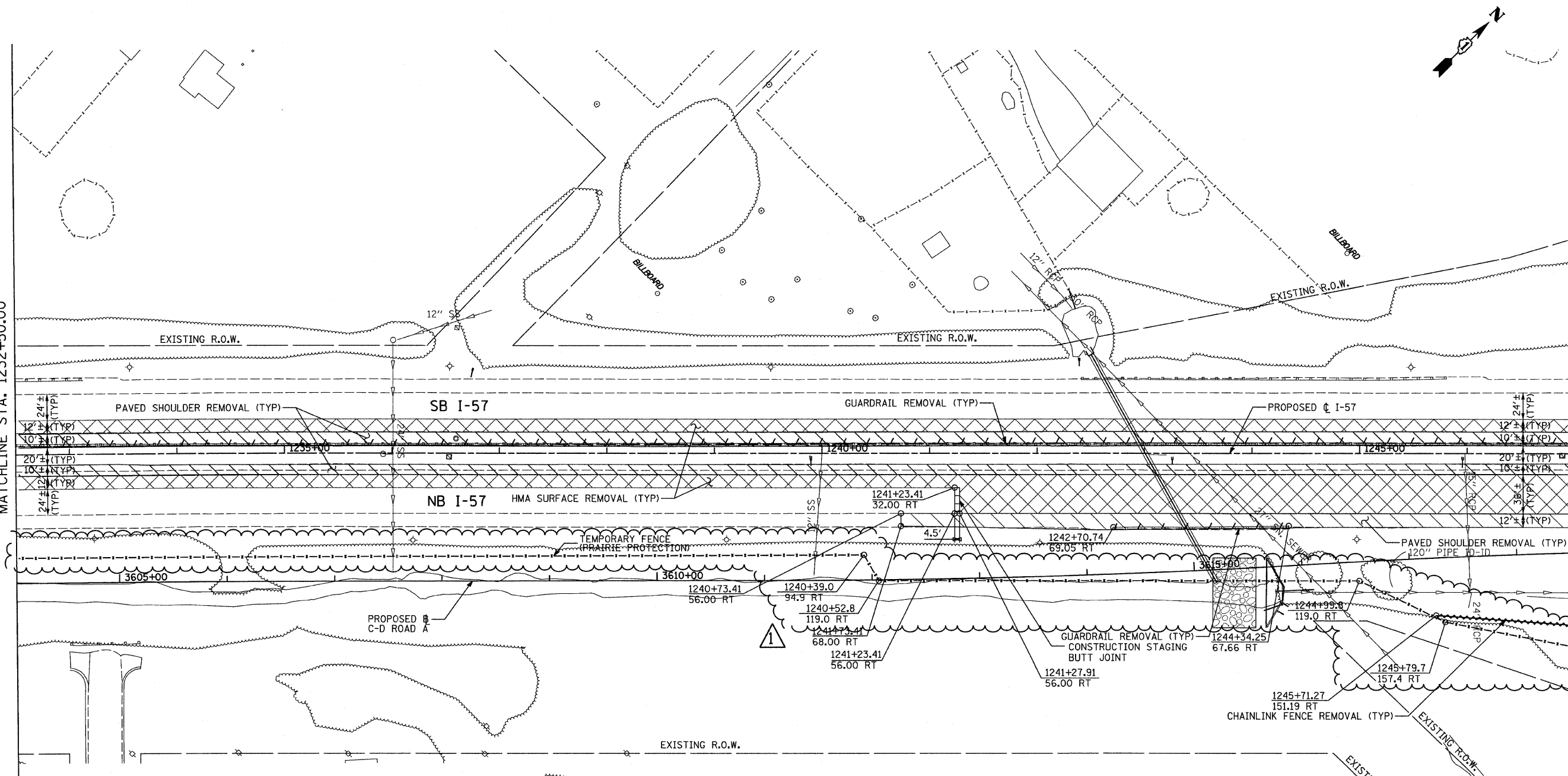


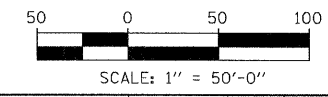
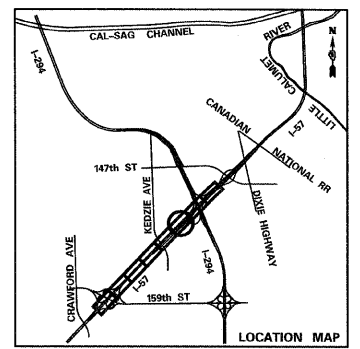
MATCHLINE STA. 1232+50.00

MATCHLINE STA. 1247+00.00



LEGEND:

- PAVED SHOULDER REMOVAL
- HOT-MIX ASPHALT SURFACE REMOVAL, 2" (SEE PLANS)
- PAVEMENT REMOVAL
- BUTT JOINT
- TREE REMOVAL (UNITS) (NO UNIT SHOWN = <6)
- TREE REMOVAL (ACRES)
- GUARDRAIL REMOVAL
- CHAIN LINK FENCE REMOVAL
- COMB CONC CURB & GUTTER REMOVAL
- CONCRETE MEDIAN BARRIER AND BASE REMOVAL
- LIMITS OF CONSTRUCTION



TYLIN INTERNATIONAL	USER NAME =	DESIGNED - CAC	REVISED - 4/29/2010
	PLOT SCALE =	DRAWN - CAC	REVISED Δ - ADDENDUM 1 05/24/10
	PLOT DATE =	CHECKED - JDF	REVISED -
		DATE - 3/18/2010	REVISED -

**STATE OF ILLINOIS
DEPARTMENT OF TRANSPORTATION**

**I-57 AT I-294 INTERCHANGE PROJECT
REMOVAL PLANS**

SCALE: 1"=50' SHEET NO. 6 OF 8 SHEETS STA. 1232+50 TO STA. 1247+00

F.A.I. RTE. 57	SECTION 1414.2B	COUNTY COOK	TOTAL SHEETS 516	SHEET NO. 37
FED. ROAD DIST. NO.		ILLINOIS FED. AID PROJECT		
		CONTRACT NO. 60J27		