

F.A.P. RTE.	SECTION	COUNTY	TOTAL SHEETS	SHEET NO.
607	13 RS-6	WILL	28	1
FED. ROAD DIST. NO.	ILLINOIS		CONTRACT NO. 60167	

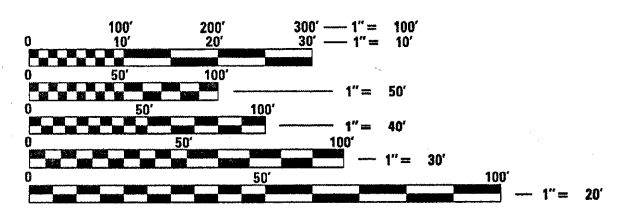
STATE OF ILLINOIS
DEPARTMENT OF TRANSPORTATION
DIVISION OF HIGHWAYS

PROPOSED
HIGHWAY PLANS

F.A.P. ROUTE 607 (US ROUTE 30)
 KRAKAR AVE. TO I-80
 SECTION: 13 RS-6
 PROJECT: ---
 RESURFACING
 WILL COUNTY
 C-91-117-10

FOR INDEX OF SHEETS, SEE SHEET NO. 2

THE PROJECT IS LOCATED IN THE CITY OF JOLIET AND THE VILLAGE OF NEW LENOX IN WILL COUNTY.

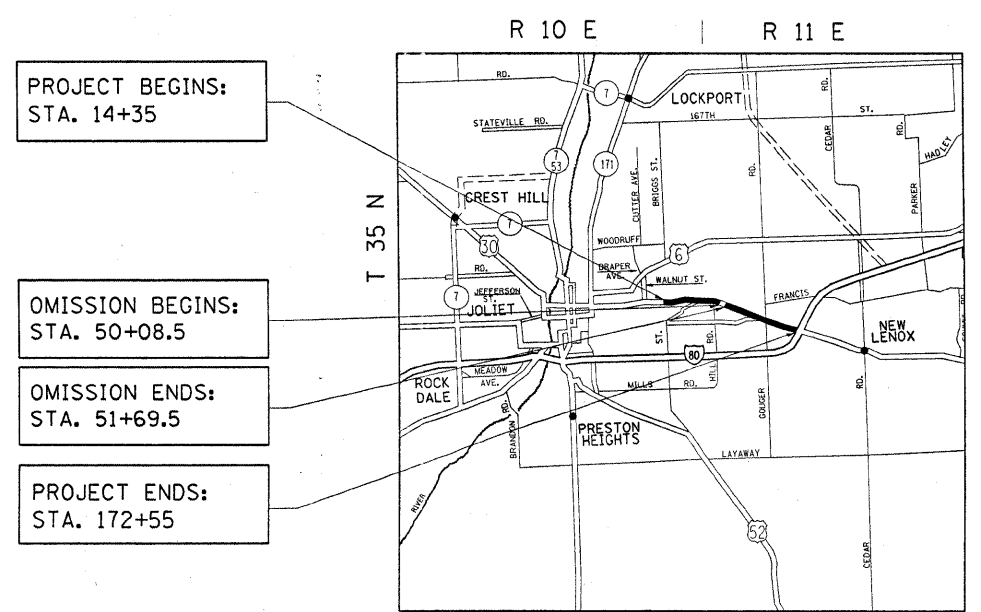


FULL SIZE PLANS HAVE BEEN PREPARED USING STANDARD ENGINEERING SCALES. REDUCED SIZED PLANS WILL NOT CONFORM TO STANDARD SCALES. IN MAKING MEASUREMENTS ON REDUCED PLANS, THE ABOVE SCALES MAY BE USED.

J.U.L.I.E.
 JOINT UTILITY LOCATION INFORMATION FOR EXCAVATION
 1-800-392-0123
 OR 811

PROJECT ENGINEER: KARI SMITH (847) 705-4437
 PROJECT MANAGER: KEN ENG

CONTRACT NO. 60167



PROJECT BEGINS:
STA. 14+35

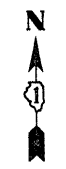
OMISSION BEGINS:
STA. 50+08.5

OMISSION ENDS:
STA. 51+69.5

PROJECT ENDS:
STA. 172+55

JOLIET TOWNSHIP & NEW LENOX TOWNSHIP

GROSS LENGTH OF IMPROVEMENT = 15,820 FEET = 3.0 MILES
 NET LENGTH OF IMPROVEMENT = 15,659 FEET = 2.97 MILES



TRAFFIC DATA
 2006 ADT = 19,700
 POSTED SPEED LIMIT = 40-45 MPH

STATE OF ILLINOIS
 DEPARTMENT OF TRANSPORTATION
 DIVISION OF HIGHWAYS

SUBMITTED JANUARY 26 2010

Diana M. O'Keefe
 DEPUTY DIRECTOR OF HIGHWAYS, REGION ENGINEER

March 19, 2010
Scott E. Stitt, P.E.
 ACTING ENGINEER OF DESIGN AND ENVIRONMENT

March 19, 2010
Christine M. Reed
 DIRECTOR OF HIGHWAYS, CHIEF ENGINEER

**PRINTED BY THE AUTHORITY
 OF THE STATE OF ILLINOIS**