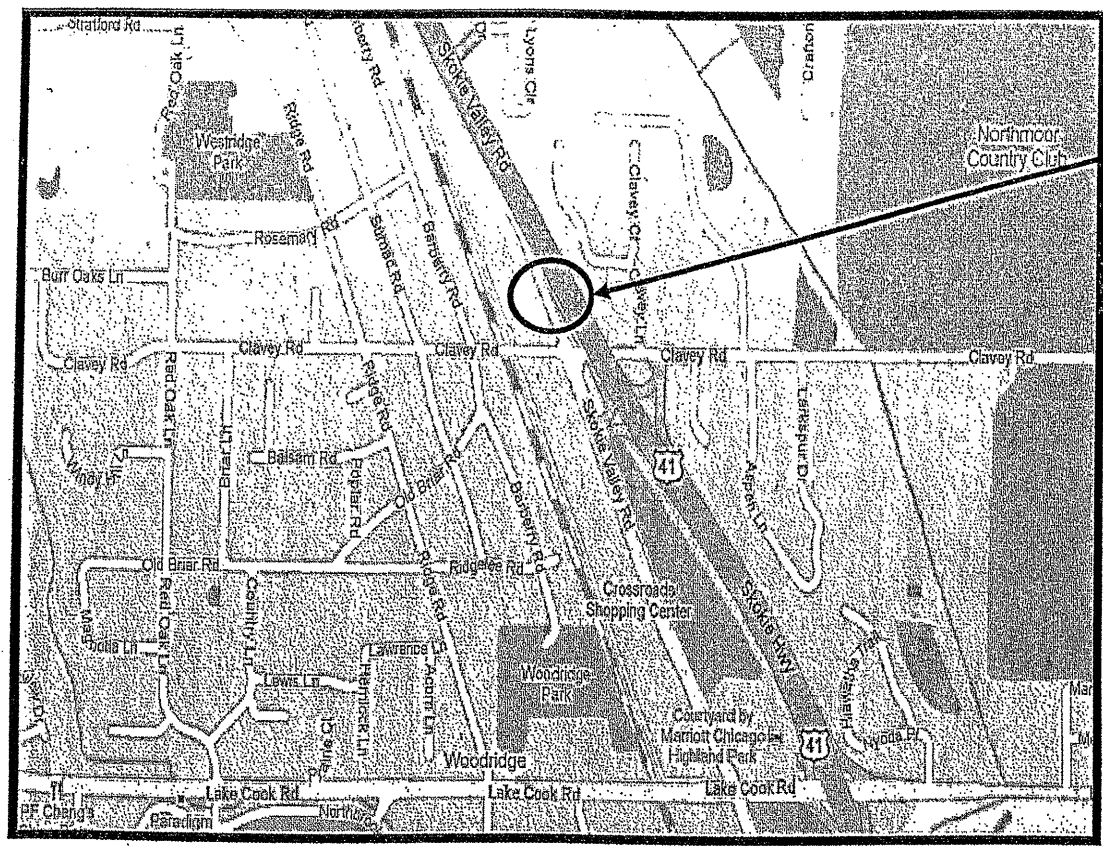


ROUTE VARIOUS	SECTION 2009-101 I	COUNTY VARIOUS	TOTAL SHEETS 36	SHEET NUMBER 29
------------------	-----------------------	-------------------	-----------------------	-----------------------

Contract 60163

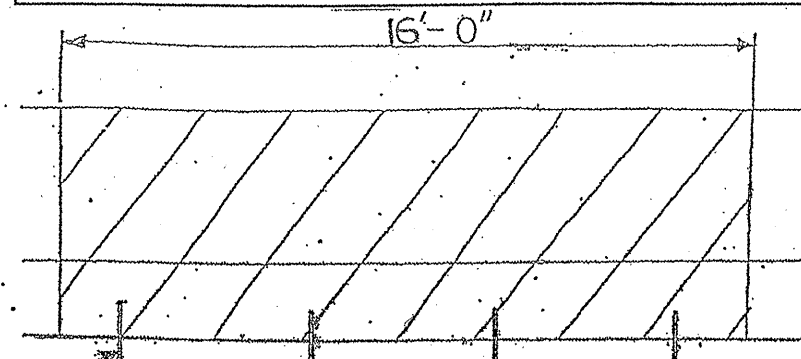
R 12 E

T 43 N



VILLAGE OF HIGHLAND PARK
DEERFIELD TOWNSHIP
LAKE COUNTY

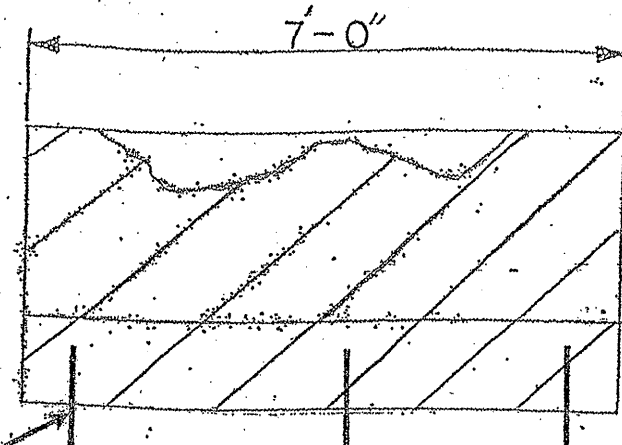
LOCATION 17: SB ROUTE 41 (SKOKIE HWY), AT THE CLAVEY ROAD LEFT EXIT RAMP, LEFT SIDE OF RAMP ON CURVE.



HATCHED AREA INDICATES CONCRETE REMOVAL

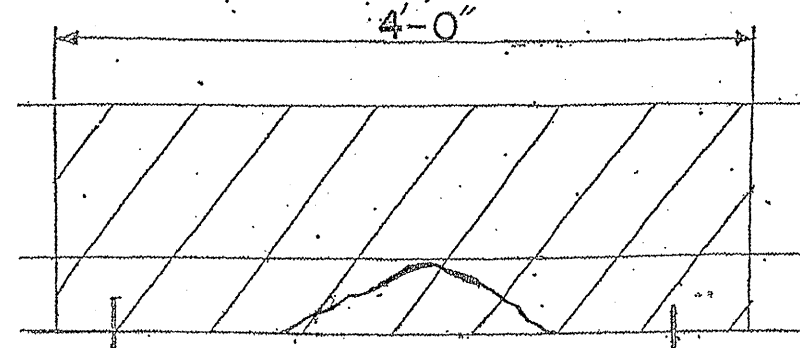
RE-ANCHOR TO PAVEMENT

SECTION
LOCATION NO. 1



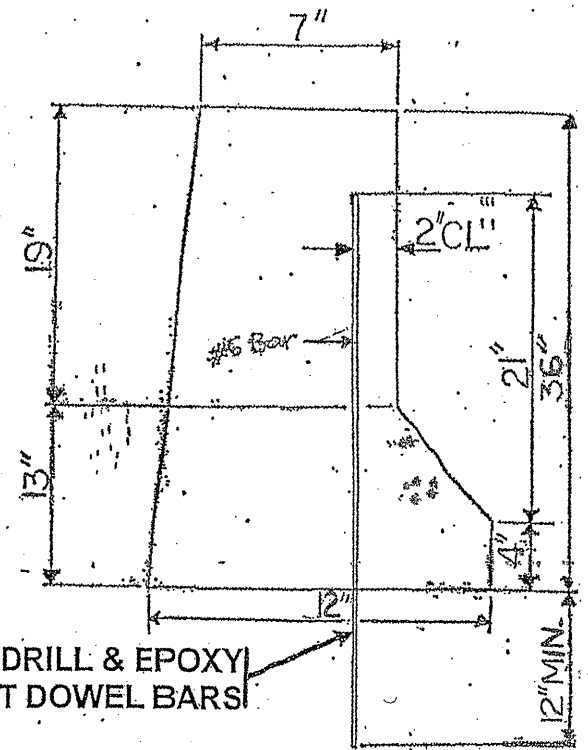
RE-ANCHOR TO PAVEMENT

SECTION
LOCATION NO. 2



SECTION
LOCATION NO. 3

RE-ANCHOR TO PAVEMENT

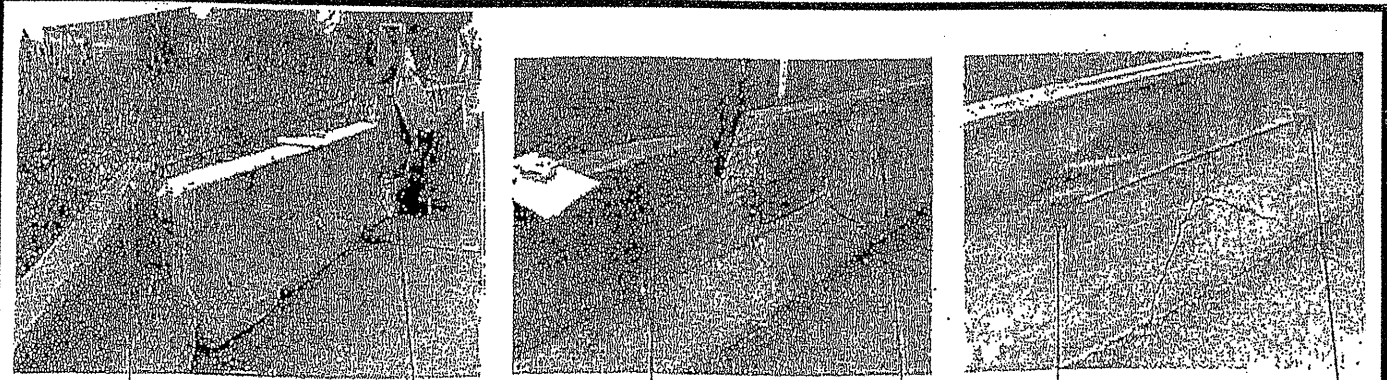


DRILL & EPOXY GROUT DOWEL BARS

SECTION 1

FULL DEPTH BARRIER REPAIR
SEE SHEET 8 FOR MORE DETAILS

Concrete Removal (Cu Yd)	2.0
Concrete Structure (Cu Yd)	2.1
FOR INFORMATION ONLY	



16' section on curve r/r
LOCATION NO. 1

7' section

LOCATION NO. 2

4' section

LOCATION NO. 3

TRAFFIC DATA:

US 41: SPEED LIMIT = 50 MPH
2007 ADT = 77,700

ILLINOIS DEPARTMENT OF TRANSPORTATION

LOCATION: 17
ROUTE 41 (SB)