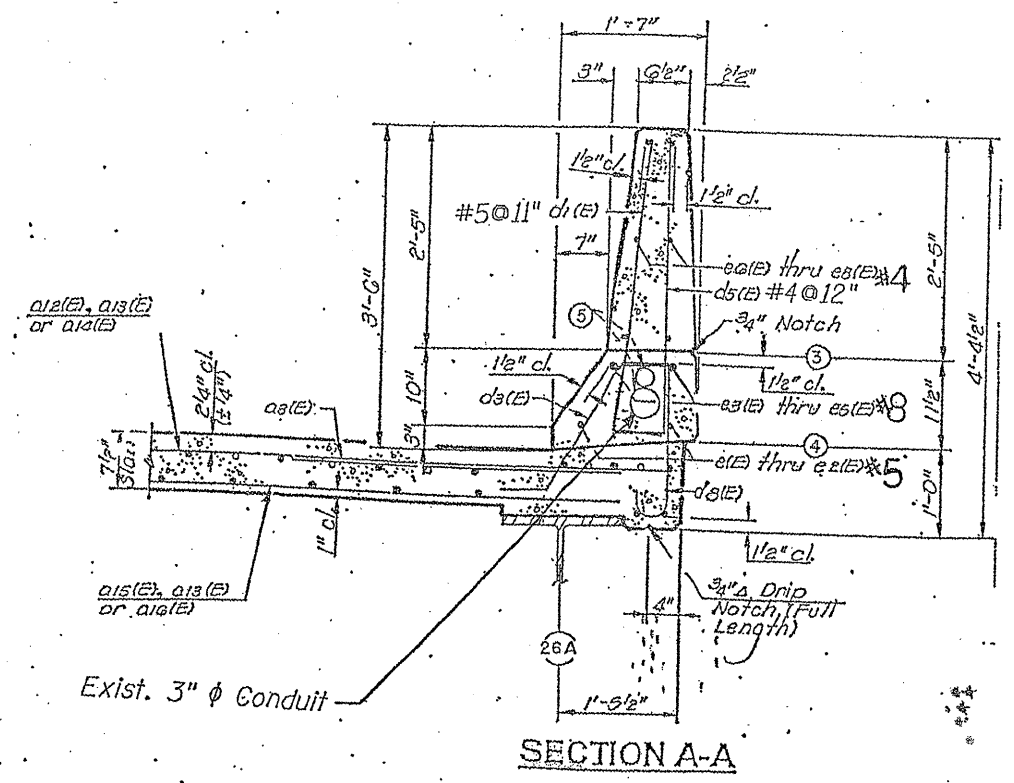


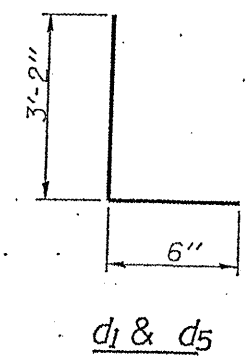
ROUTE	SECTION	COUNTY	TOTAL SHEETS	SHEET NUMBER
VARIOUS	2009-1011	VARIOUS	36	21

Contract 60163



BRIDGE PARAPET REPAIR  
SEE SHEET 10 FOR MORE DETAILS

Bar	No.	Size	Length	Shape
e	6	#4	14'-9"	—
e <sub>1</sub>	2	#8	14'-9"	—
e <sub>2</sub>	2	#5	14'-9"	—
d <sub>1</sub>	17	#5	3'-8"	—
d <sub>5</sub>	16	#4	3'-8"	—
Reinforcement Bars, Epoxy Coated			Lbs.	270
Concrete Superstructure			Cu. Yds.	1.8
Concrete Removal			Cu. Yds.	1.7
Mechanical Splicers			Each	10
FOR INFORMATION ONLY				



ALL REINFORCEMENT BARS  
SHALL BE EPOXY COATED (E)

ILLINOIS DEPARTMENT OF TRANSPORTATION

LOCATION: 10  
I-90/94 (JFK) AT KIMBALL AVE  
SN 016-1109

SHEET 2 OF 2