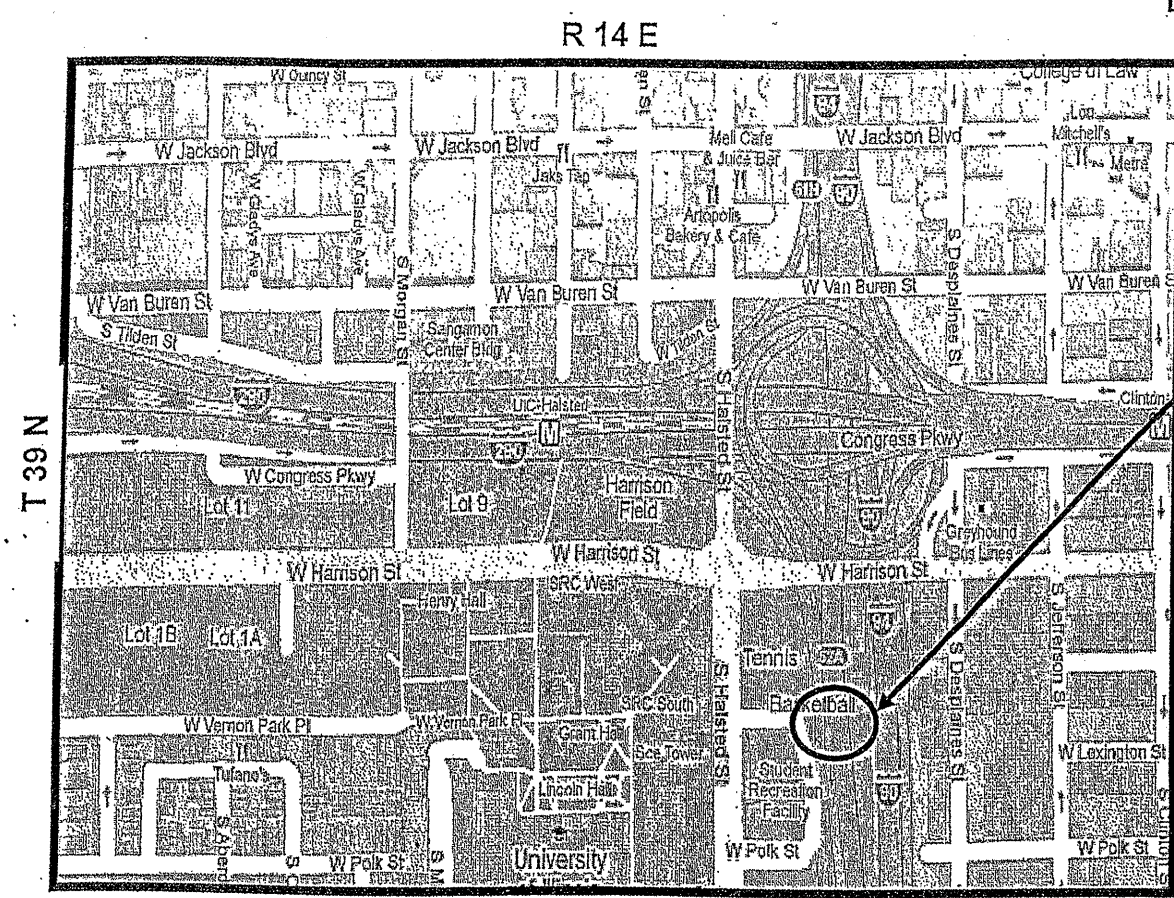


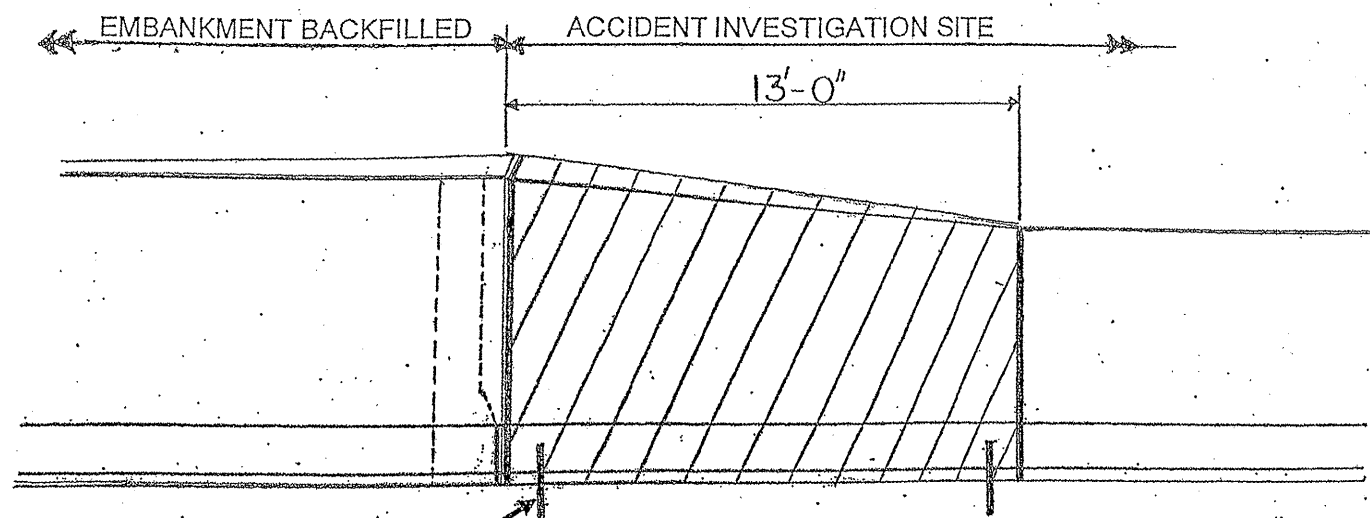
ROUTE	SECTION	COUNTY	TOTAL SHEETS	SHEET NUMBER
VARIOUS	2009-1011	VARIOUS	36	19

Contract 60163

LOCATION 9: I-90/94 SB (DAN RYAN) SOUTH OF HARRISON STREET, AT THE NORTH END OF THE POLK STREET, AIS.

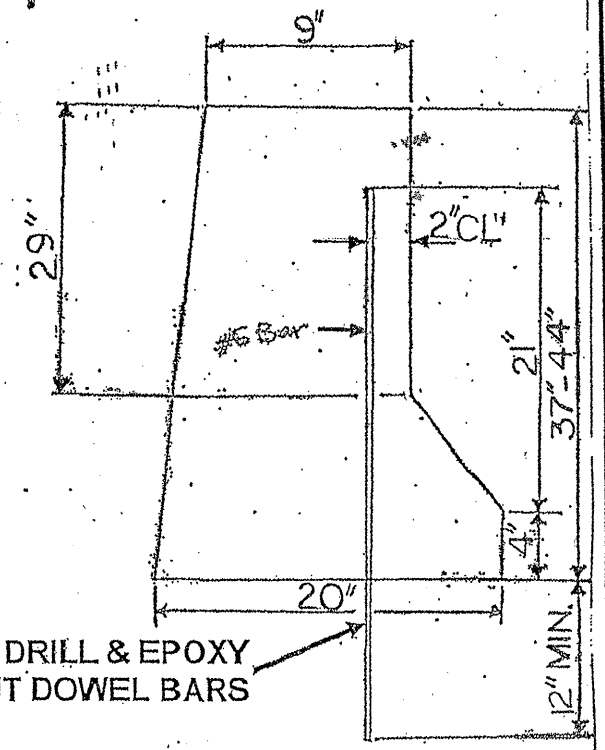


CITY OF CHICAGO
WEST TOWNSHIP
COOK COUNTY

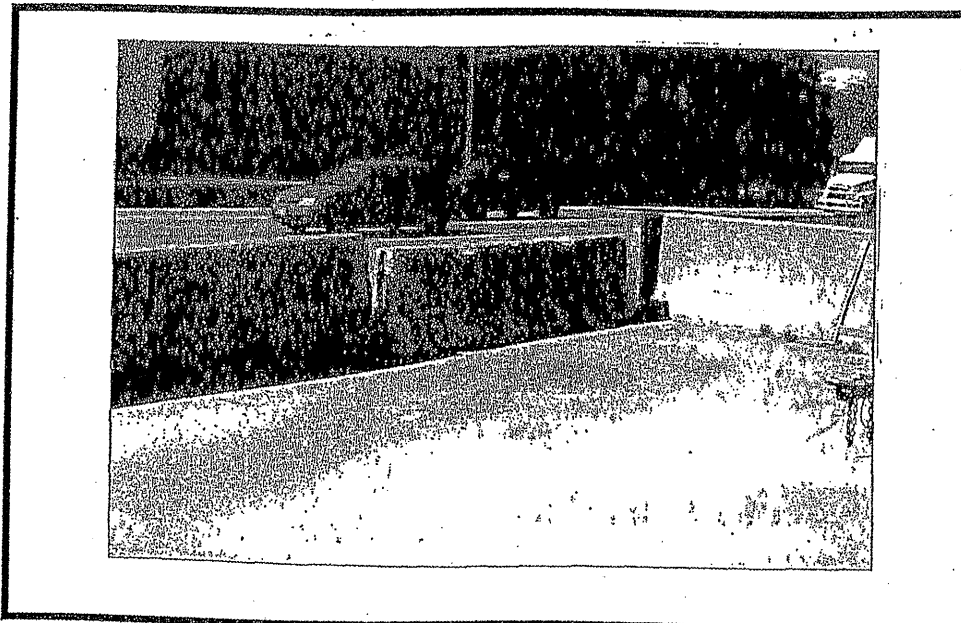


RE-ANCHOR TO PAVEMENT ELEVATION

HATCHED AREA INDICATES CONCRETE REMOVAL
 INDICATES LIMITS OF CONCRETE STRUCTURES



SECTION



RETURN TEMP. CONCRETE BARRIER WALL
TO DAN RYAN MAINTENANCE YARD
6543 SOUTH WENTWORTH AVE.
CHICAGO IL, 60621
CONTACT DIONNE WINESBERRY
(847) 705-4516
24.HR. NOTICE

COST INCLUDD IN "CONCRETE BARRIER WALL REMOVAL AND REPLACEMENT".

TRAFFIC DATA:
I-90/94: SPEED LIMIT = 55 MPH
2009 ADT = 166,200

FULL DEPTH BARRIER REPAIR
SEE SHEET 8 FOR MORE DETAILS

Concrete Structure (Cu Yd)	1.5
FOR INFORMATION ONLY	

ILLINOIS DEPARTMENT OF TRANSPORTATION

LOCATION: 9
I-90/94 SB