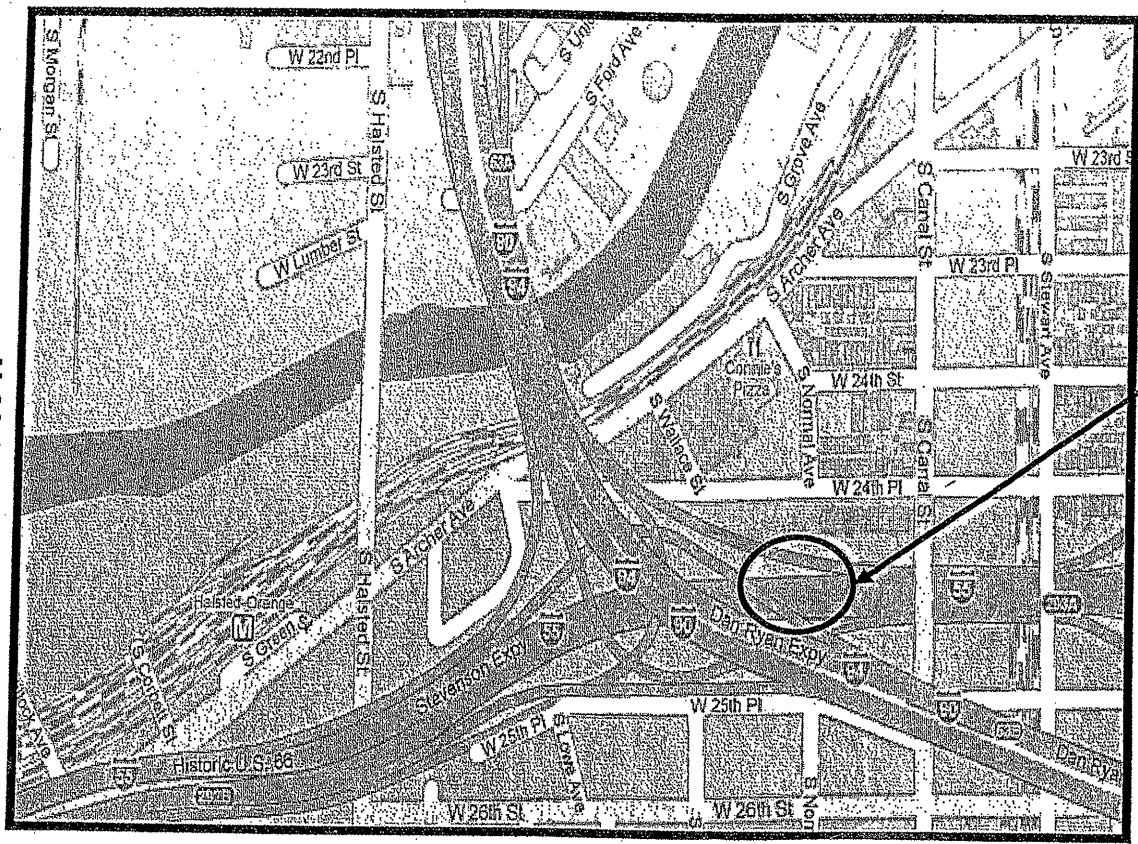


|         |            |         |              |              |
|---------|------------|---------|--------------|--------------|
| ROUTE   | SECTION    | COUNTY  | TOTAL SHEETS | SHEET NUMBER |
| VARIOUS | 2009-101 I | VARIOUS | 36           | 15           |

Contract 60163

R 14 E

T 39 N

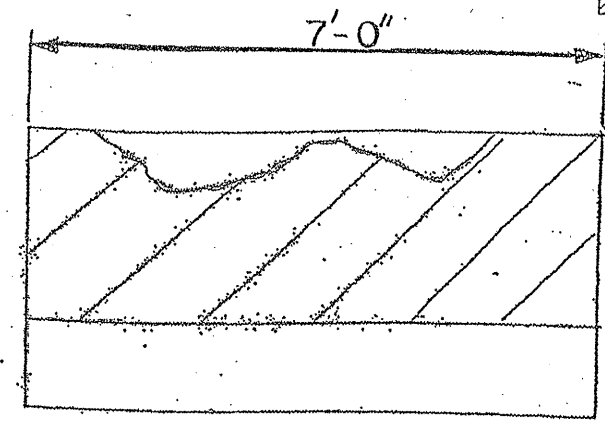


CITY OF CHICAGO  
SOUTH TOWNSHIP  
COOK COUNTY

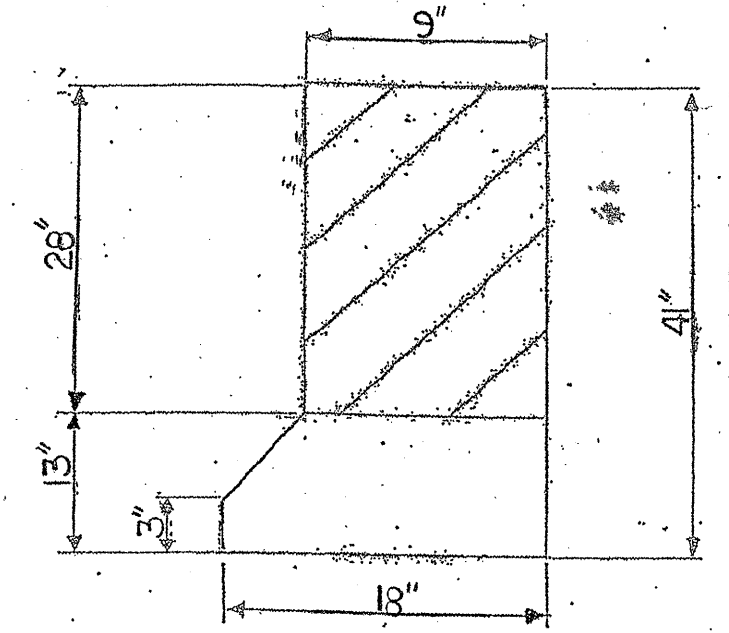


LOCATION 5: RAMP NB I-94 (DAN RYAN) TO SWB I-55 RIGHT SIDE

HATCHED AREA INDICATES CONCRETE REMOVAL



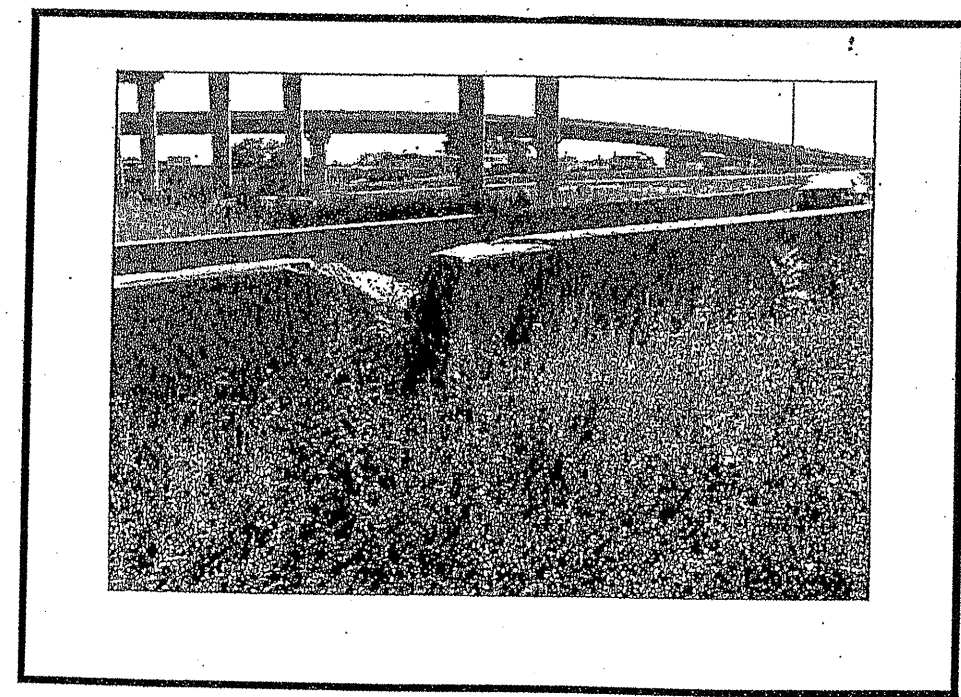
ELEVATION



SECTION

HALF DEPTH BARRIER REPAIR  
SEE SHEET 9 FOR MORE DETAILS

|                            |     |
|----------------------------|-----|
| Concrete Removal (Cu Yd)   | 0.8 |
| Concrete Structure (Cu Yd) | 0.8 |
| FOR INFORMATION ONLY       |     |



**TRAFFIC DATA:**  
I-55 (SWB) RAMP: SPEED LIMIT = 20 MPH  
2009 ADT = 169,000

ILLINOIS DEPARTMENT OF TRANSPORTATION  
  
LOCATION: 5  
RAMP NB I-94 TO SWB I-55