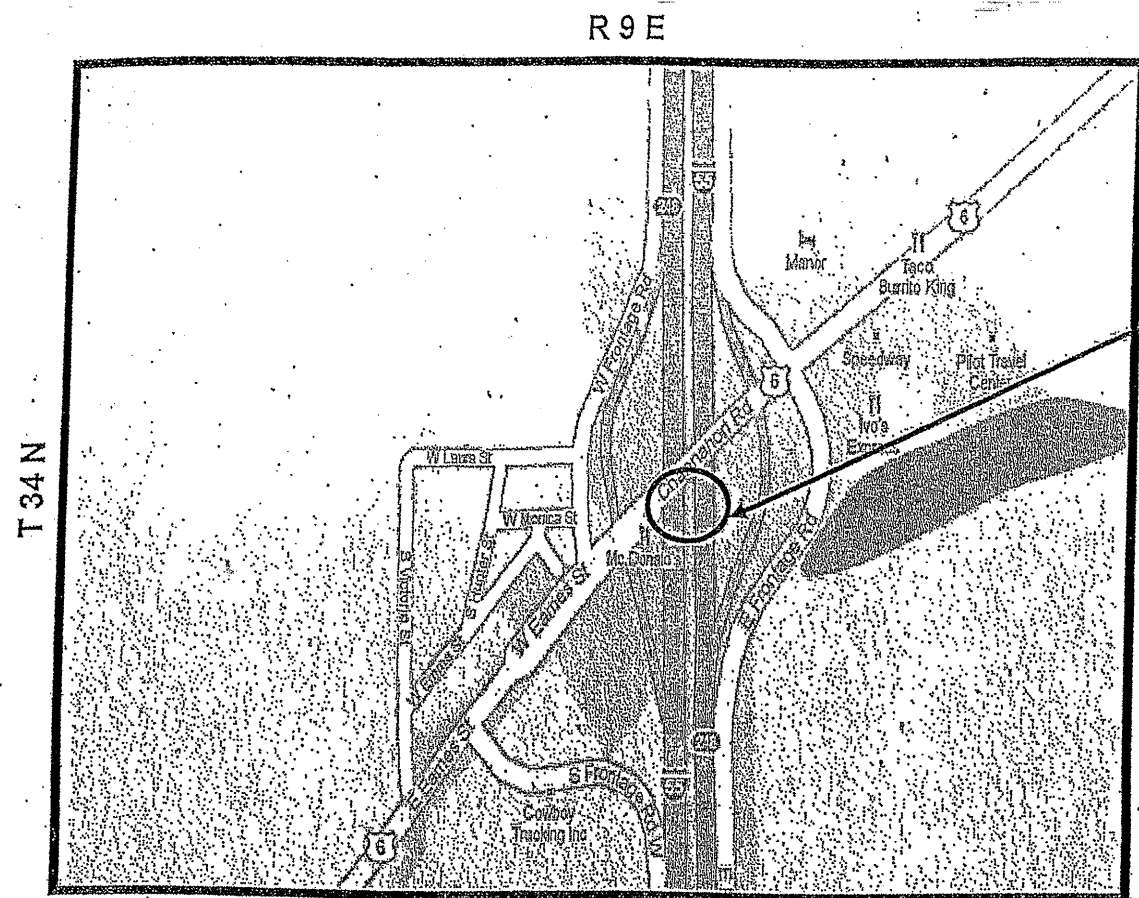


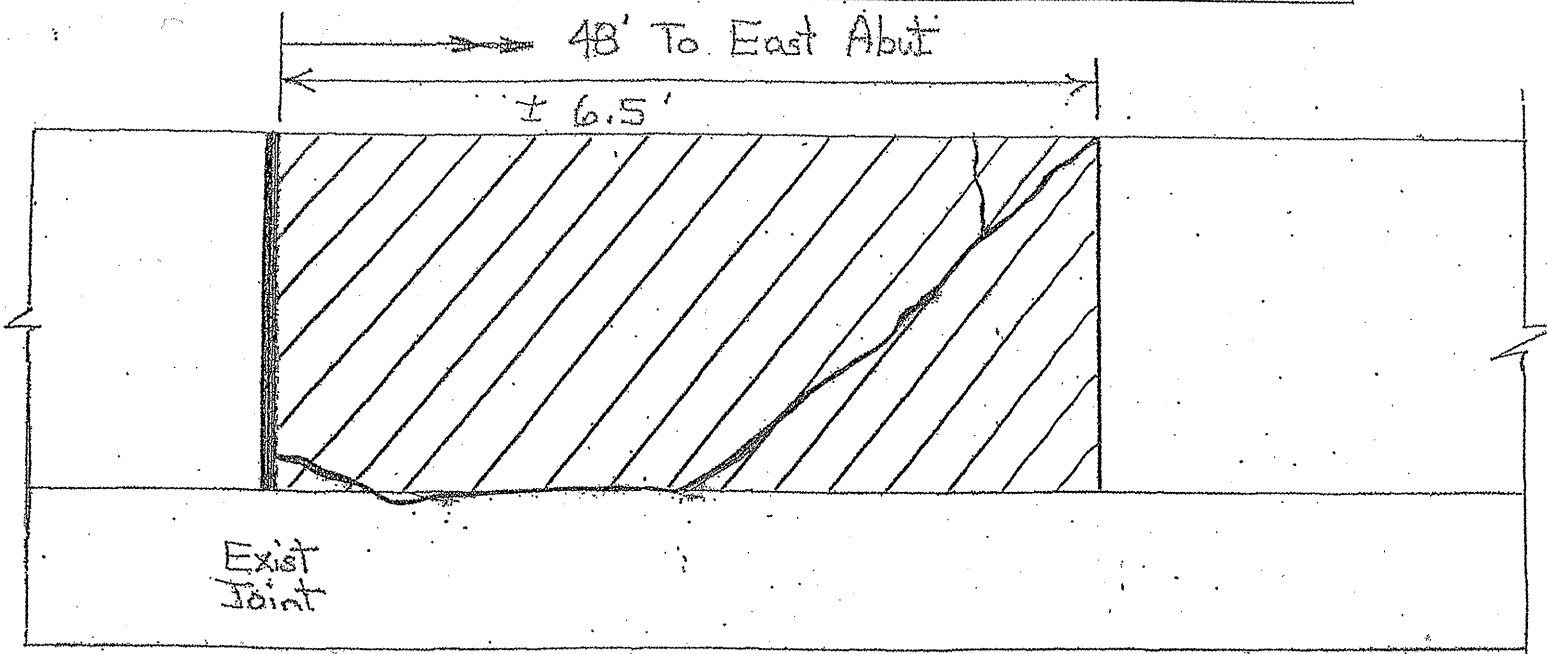
ROUTE VARIOUS	SECTION 2009-1011	COUNTY VARIOUS	TOTAL SHEETS 36	SHEET NUMBER 13
------------------	----------------------	-------------------	--------------------	--------------------

Contract 60163



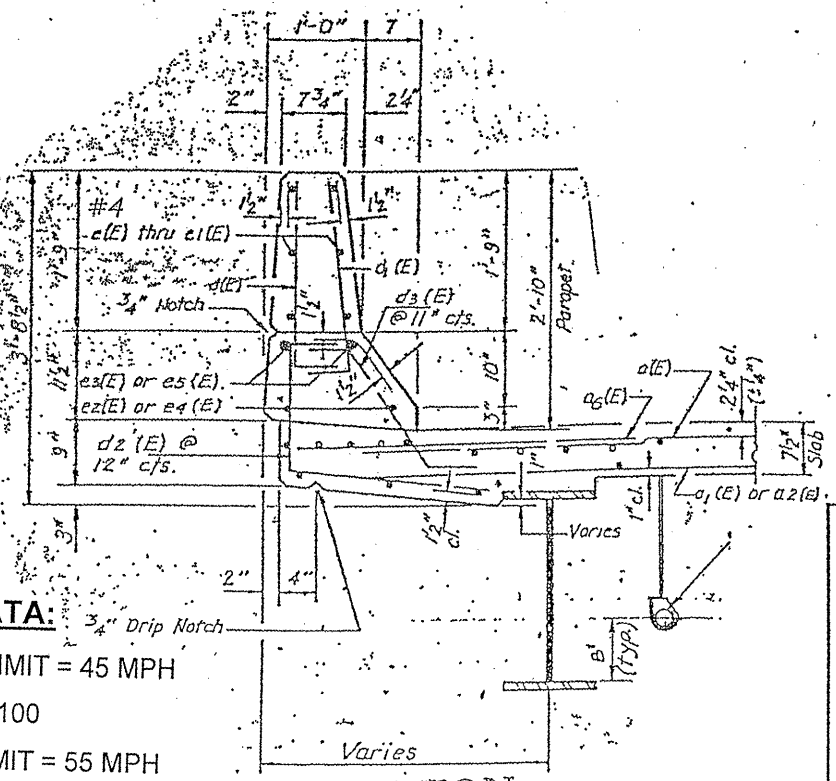
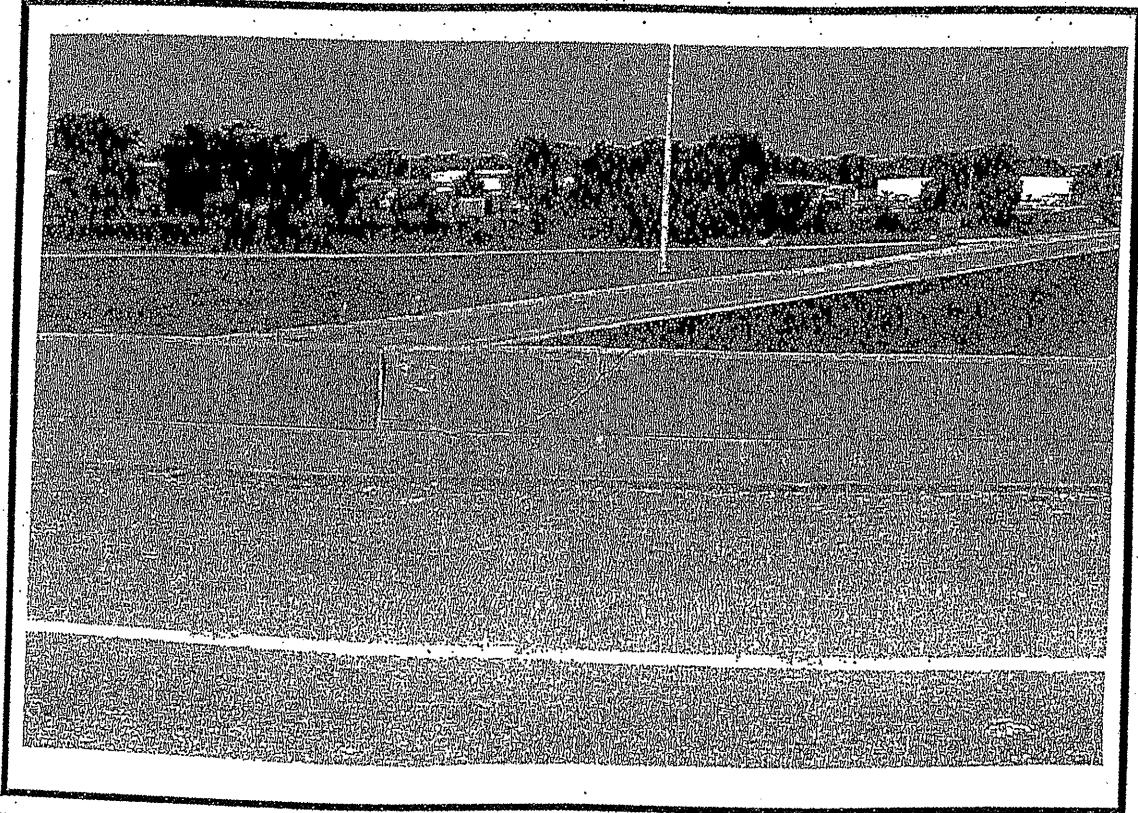
VILLAGE OF CHANNAHON  
CHANNAHON TOWNSHIP  
WILL COUNTY

**LOCATION 3: US 6 OVER I-55 NORTH PAREPET OVER RIGHT SHOULDER  
NB I-55, STRUCTURE NO 099-0277.**



**ELEVATION**

HATCHED AREA INDICATES CONCRETE REMOVAL  
 INDICATES LIMITS OF CONCRETE STRUCTURES



**SECTION**

**BRIDGE PARAPET REPAIR  
SEE SHEET 10 FOR MORE DETAILS**

Bar	No.	Size	Length	Shape	
e	6	#4	6'-3"	—	
Reinforcement Bars, Epoxy Coated				Lbs.	3.0
Concrete Superstructure				Cu. Yds.	0.3
Concrete Removal				Cu. Yds.	0.4
Mechanical Splice				Each	6

FOR INFORMATION ONLY

**TRAFFIC DATA:**

US 6: SPEED LIMIT = 45 MPH  
 2009 ADT = 50,100  
 I-55: SPEED LIMIT = 55 MPH  
 2009 ADT = 68,000

ILLINOIS DEPARTMENT OF TRANSPORTATION

**LOCATION: 3  
 US 6 OVER I-55  
 SN 099-0277**