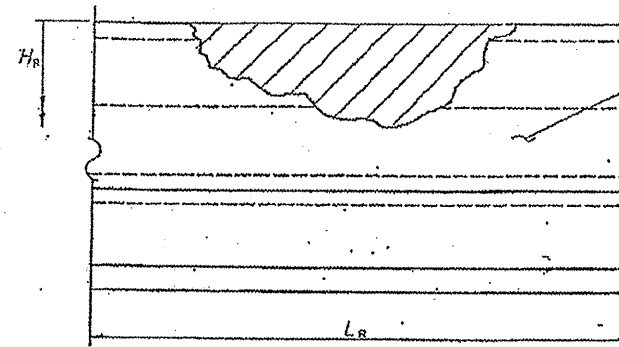
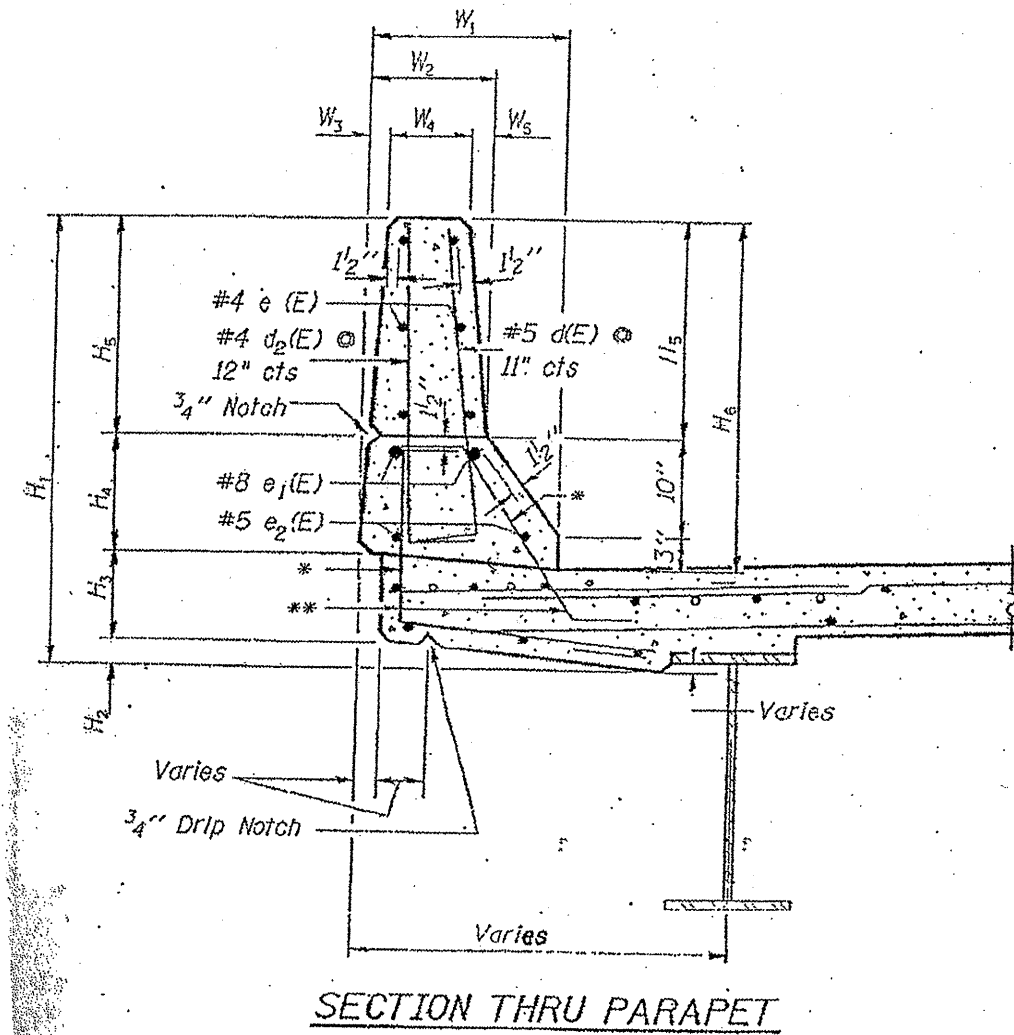


ROUTE	SECTION	COUNTY	TOTAL SHEETS	SHEET NUMBER
VARIOUS	2009-1011	VARIOUS	36	10

Contract 60163



FRONT FACE OF PARAPET

H_r and L_r indicate dimensions for concrete removal. Perimeters of concrete removal areas shall be saw cut $\frac{3}{4}$ " prior to removal of concrete.

NOTE: Concrete removal shall extend a minimum of 6" past damage or to joint if within 2'-0".

The cost of saw cuts shall be included in the cost of "Concrete Removal"

* Existing bars to be cleaned, straightened, and incorporated in new construction

** Note: If existing vertical rebar is missing; bars d₁(E) and d₂(E) shall be straightened and epoxy grouted into existing concrete 9" deep. Cost shall be included in "concrete Barrier Wall Removal and Replace, Location (Number)".

ILLINOIS DEPARTMENT OF TRANSPORTATION

TYPICAL BRIDGE PARAPET
REPAIR DETAILS