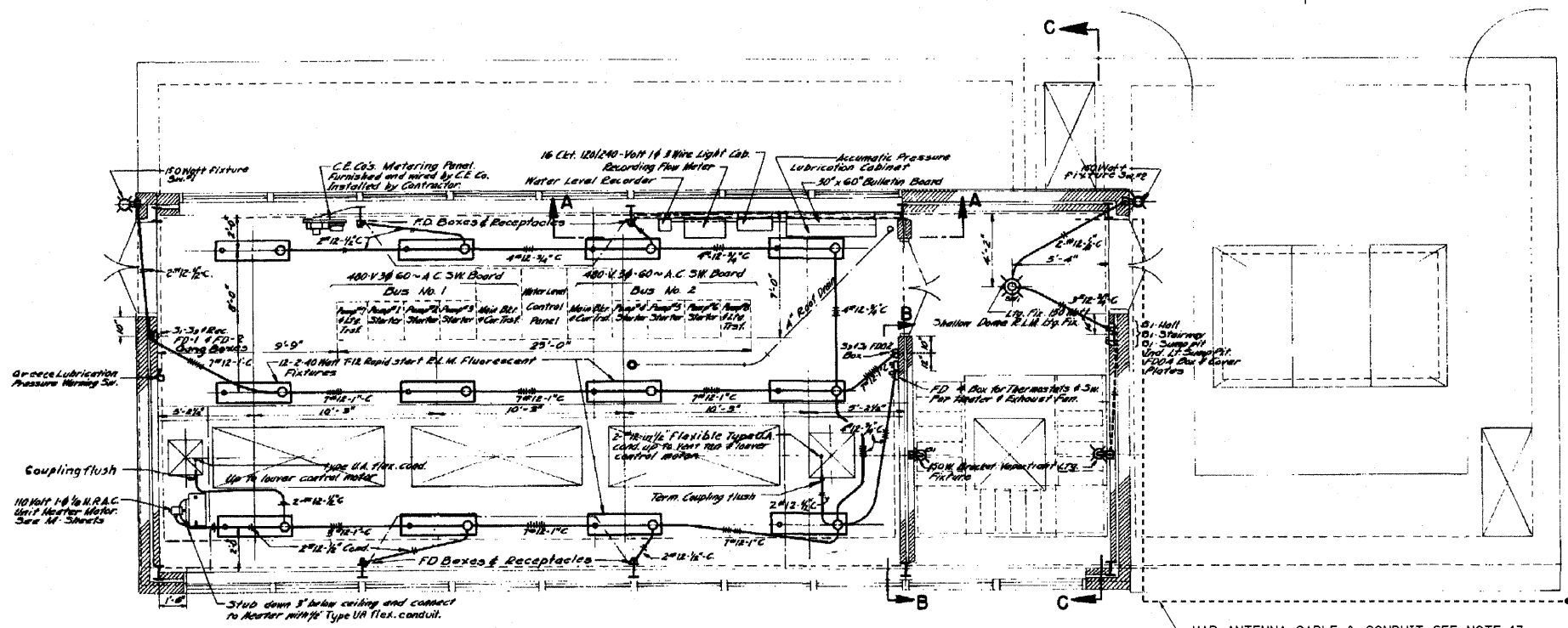
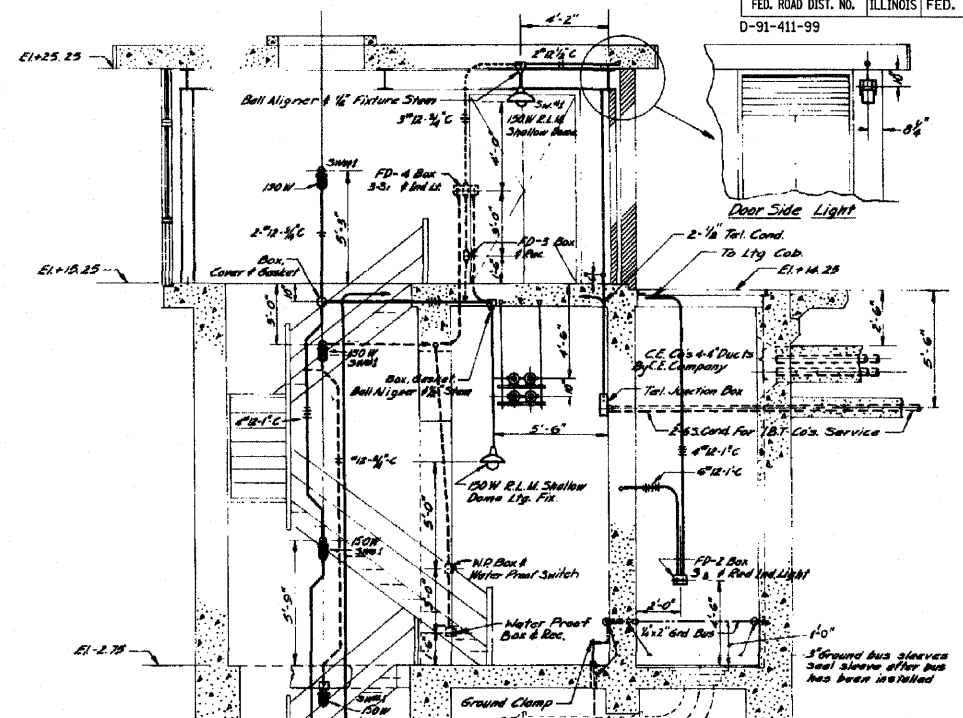


| | | | | |
|---------------------|------------|---------------------------|--------------|-----------|
| F.A.P. RTE. | SECTION | COUNTY | TOTAL SHEETS | SHEET NO. |
| 90/94 | 1999-161-1 | COOK | 75 | 67 |
| STA. | | TO STA. | | |
| FED. ROAD DIST. NO. | | ILLINOIS FED. AID PROJECT | | |
| D-91-411-99 | | | | |

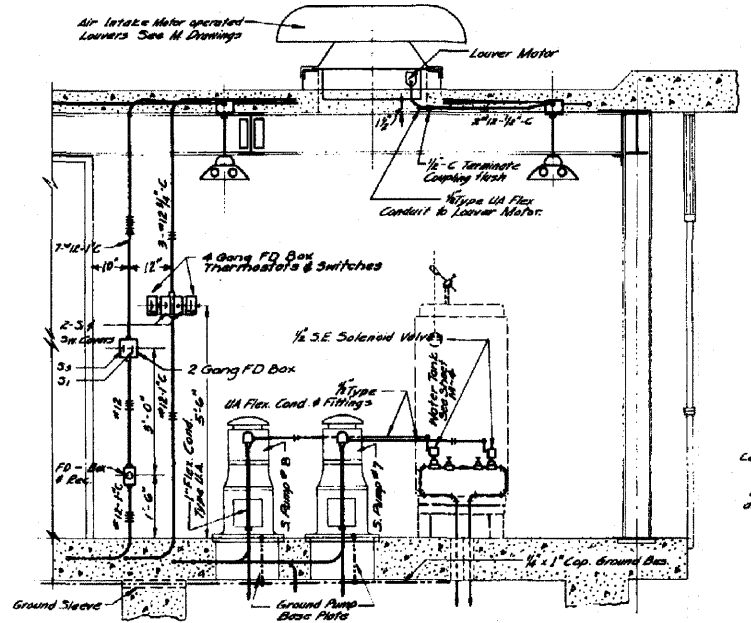


ROOF PLAN ELEV. + 25.25
SCALE: 1/2" = 1'-0"

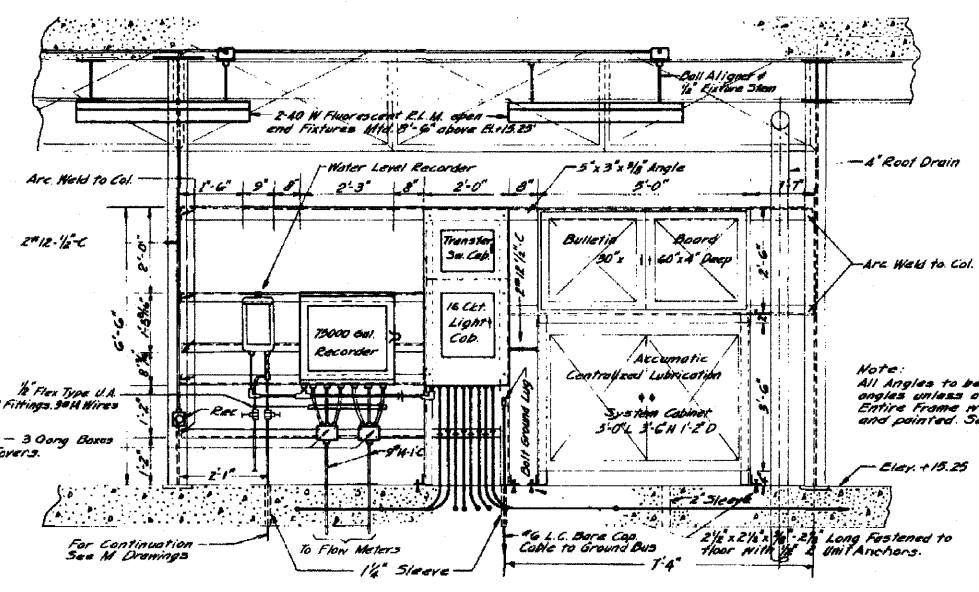


SECTION C-C
NO SCALE

- DEMOLITION NOTES:**
- DRAWINGS DE-1, DE-2 & DE-3 ARE NOT UPDATED. NEW MCC, SCADA, CONTROL PANEL & 480V SWGR HAVE BEEN INSTALLED IN 2001 UNDER IDOT MAINTENANCE CONTRACT AND NOT SHOWN ON THESE DRAWINGS.
 - ALL DEMOLITION WORK TO BE COORDINATED WITH NEW CONSTRUCTION AND MAINTENANCE OF SERVICE AS THE SPECIFIED AND APPROVED MANUFACTURER'S SHOP DRAWINGS. WORK DEMO DWGS WITH DWG'S E-5 AND E-6.
 - CONTRACTOR SHALL VISIT THE SITE IN ORDER TO FAMILIARIZE HIMSELF WITH THE CONDITIONS UNDER WHICH HE WILL PERFORM THE WORK.
 - CONTRACTOR TO DISCONNECT AND REMOVE ALL POWER, CONTROL & INSTRUMENTATION WIRING INCLUDING CONDUIT AND ASSOCIATED EQUIPMENT FOR THE FOLLOWING:
 - A) MAIN PUMPS 1 THRU 6
 - B) LOW FLOW PUMP 7
 - C) NORTH BLOWER
 - D) SOUTH BLOWER
 - E) TRASH RAKE
 - F) SOUTH DUCT HEATER 1
 - G) SOUTH DUCT HEATER 2
 - CONTRACTOR SHOULD NOT DISCONNECT CONTROL WIRING BETWEEN THE FOLLOWING CABINETS:
 - A) MCC (PUMP CONTROL) AND SCADA
 - B) MCC (PUMP CONTROL) AND CONTROL PANEL
 - C) CONTROL PANEL AND SCADA
 - D) MCC AND LIGHTING TR-2
 - CONTRACTOR SHOULD NOT REMOVE CONDUITS AND WIRING FOR THE EXISTING TELEPHONE & RADIO SERVICE. THEY SHOULD REMAIN IN PLACE AND SHALL BE REROUTED WITH RELOCATION OF HAR, AEGIS AND SCADA RADIO CABINETS AS SHOWN ON DWG E-5.

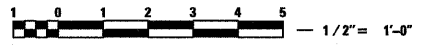


ELEVATION B-B
NO SCALE



ELEVATION A-A
NO SCALE

- DEMOLITION NOTES:**
- CONTRACTOR TO DISCONNECT AND REMOVE CABLES AND CONDUITS FROM CONTROL PANEL TO EXISTING FLOAT TERMINAL BOX. DISCONNECT EXISTING FLOAT SWITCHES FROM FLOAT TERMINAL BOX AND REMOVE THE BOX DO NOT REMOVE FLOAT SWITCHES (SEE DWG E-5).
 - CONTRACTOR TO DISCONNECT AND REMOVE ALL LIGHTS, RECEPTACLES AND SWITCHES INCLUDING WIRING AND CONDUIT.
 - EXISTING GROUNDING SYSTEM TO BE REMAINED IN PLACE.
 - ALL UNUSED CONDUIT OPENINGS AND CONDUITS SHALL BE SEALED.
 - ALL DEMOLITION WORK ASSOCIATED WITH DISCONNECTION AND REMOVAL OF THE EXISTING COMED TRANSFORMERS FROM COMED VAULT SHALL BE PERFORMED BY COMED.
 - ALL ELECTRICAL DEMOLITION WORK TO BE COORDINATED WITH MECHANICAL DEMOLITION DRAWINGS DM-1, DM-2, DM-3 AND DM-4.
 - CONTRACTOR TO DISCONNECT AND REMOVE WIRING AND CONDUIT FOR THE HAR ANTENNA.



| REVISIONS | |
|-----------|------|
| NAME | DATE |
| | |
| | |
| | |
| | |
| | |

ILLINOIS DEPARTMENT OF TRANSPORTATION

DEMOLITION ELECTRICAL PLANS & SECTIONS

SCALE: VERT. AS NOTED
HORIZ. DATE: 3/23/2010

DRAWN BY: B.K.
CHECKED BY: M.Z.

DESIGNED BY: ADRIAN C. CUSON
DRAWN BY: ADRIAN C. CUSON
TRACED BY: C. BACALZO
CHECKED BY: J.E. FRANELIN
APPROVED BY: [Signature]
ELECTRICAL ENGINEER

PLOT DATE = 3/22/2010
FILE NAME = D:\B208\B208-161-DE-67.dgn
PLOT SCALE = 1/2" = 1'-0"
USER NAME = MUSEBT