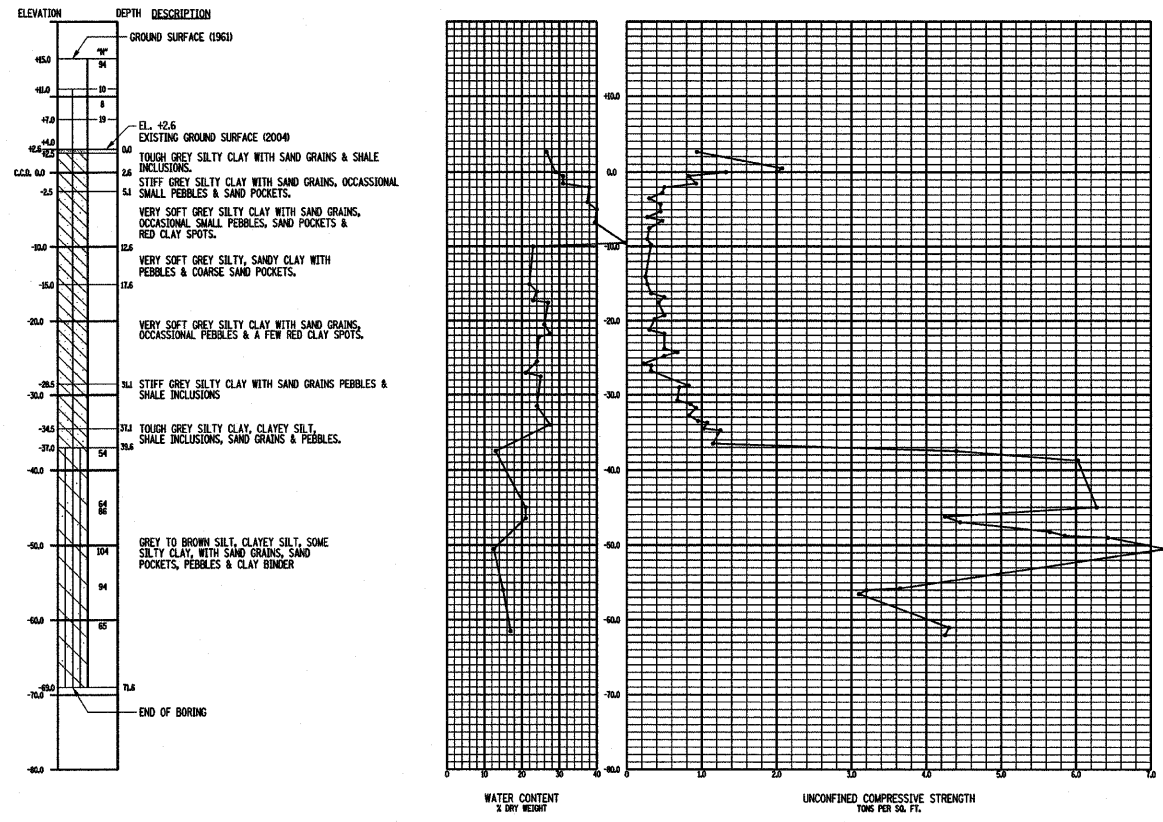
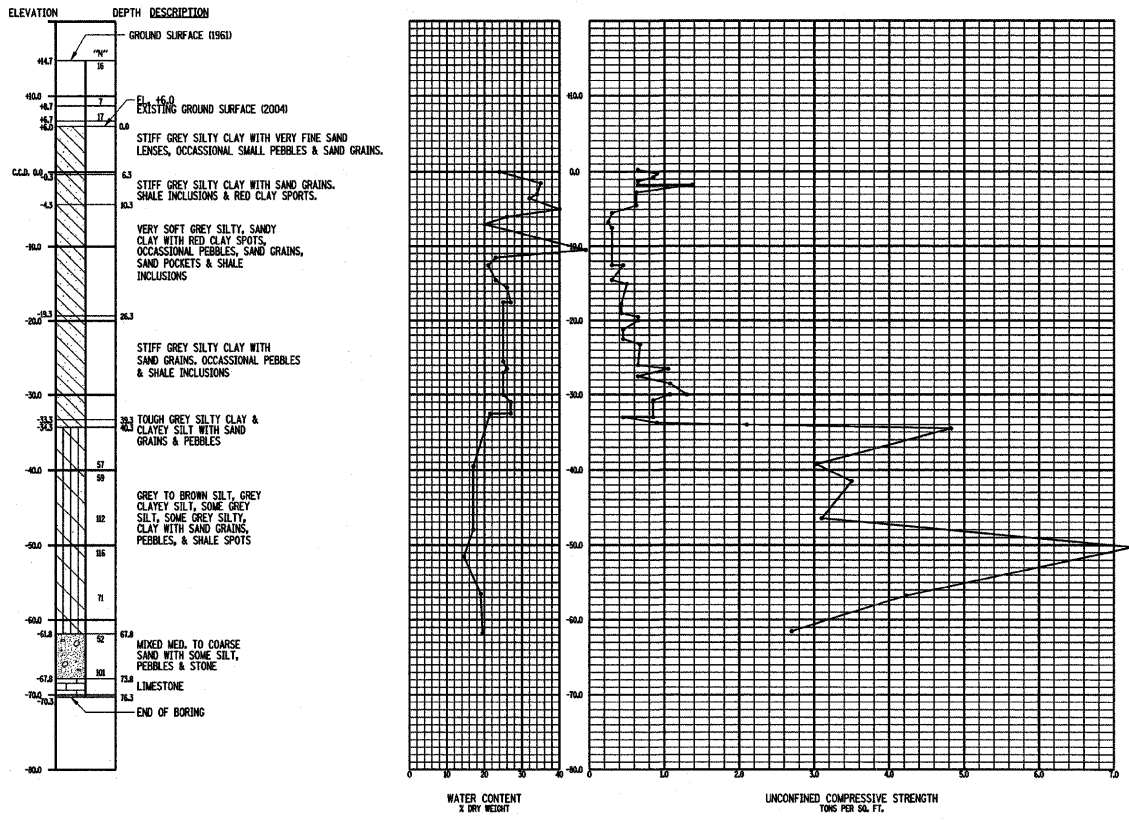


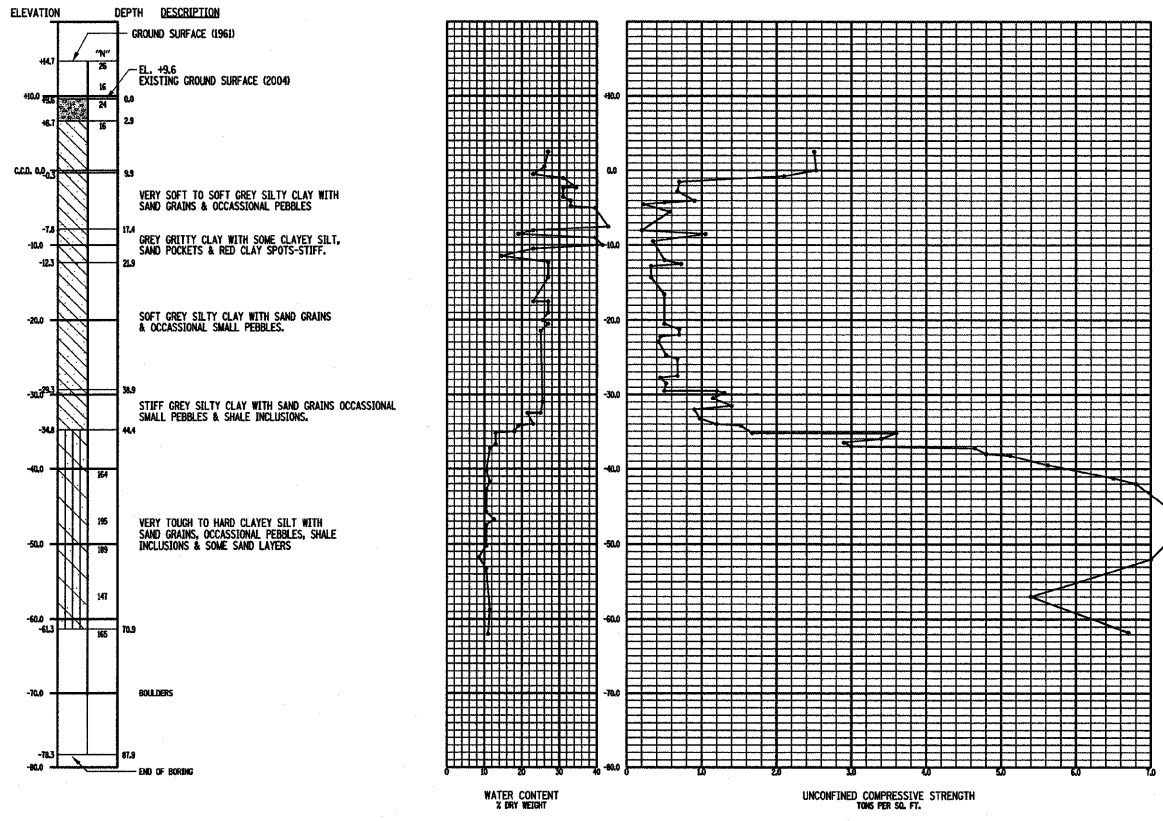
F.A.P. RTE.	SECTION	COUNTY	TOTAL SHEETS	SHEET NO.
90/94	1999-161-1	COOK	75	32
STA.		TO STA.		
FED. ROAD DIST. NO.		ILLINOIS FED. AID PROJECT		
D-91-411-99				



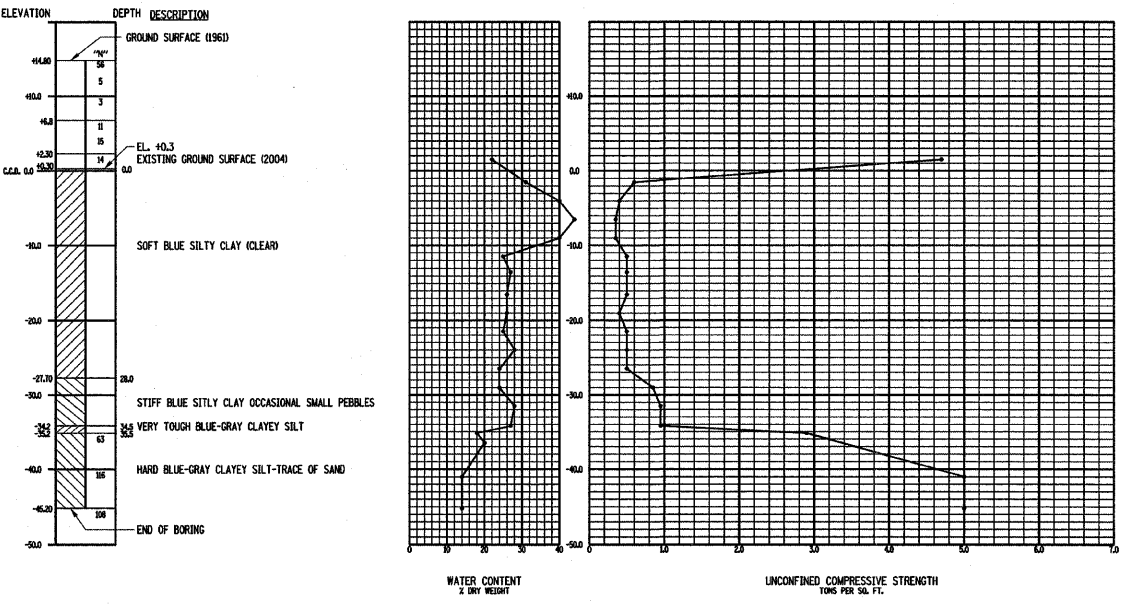
SOIL BORING NO. AB-9



SOIL BORING NO. AB-10



SOIL BORING NO. B-17



SOIL BORING NO. S-12

REMARKS: "N" NUMBER OF BLOWS OF 140# Wt. FALLING 30" TO PENETRATE 12"  
 ⊙ TEST VALUES  
 △ REMOLDED STRENGTH VALUES  
 W/L WATER LEVEL - 24HR PERIOD  
 SEE SHT. G-3 FOR LOCATIONS

3/22/2010  
 D:\60828\mhe-s-13.dgn  
 USER: mhe



REVISIONS	
NAME	DATE

ILLINOIS DEPARTMENT OF TRANSPORTATION  
**SOIL BORINGS**  
 SCALE: VERT. NO SCALE  
 HORIZ. NO SCALE  
 DATE: 3/23/2010  
 DRAWN BY: A.T.  
 CHECKED BY: A.N.