

F.A.P. RTE.	SECTION	COUNTY	TOTAL SHEETS	SHEET NO.
90/94	1999-161-1	COOK	75	1

MARK R. JENKINS - IDOT ELECTRICAL OPERATIONS CONTRACT PLANS UNIT CHIEF (847) 705-4387

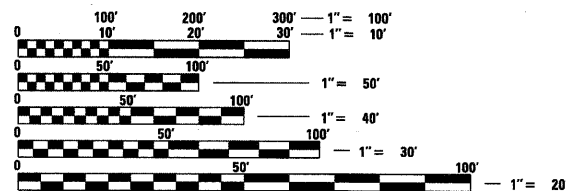
INDEX OF SHEETS / DRAWINGS

SHEET NO.	DRAWING NO.	TITLE
1	G-1	TITLE SHEET
2	G-2	GENERAL NOTES & STANDARDS
3	G-3	NOTES
4	G-4	SUMMARY OF QUANTITIES
5	G-5	EXISTING SITE PLAN
6	G-6	PROPOSED SITE PLAN
7	G-7	DRAINAGE, UTILITIES & EROSION CONTROL PLAN
8	G-8	SITE DETAILS
9	G-9	SITE DETAILS
10	G-10	HAR ANTENNA FOUNDATION
11	DM-1	MECHANICAL DEMOLITION - SHEET 1
12	DM-2	MECHANICAL DEMOLITION - SHEET 2
13	DM-3	MECHANICAL DEMOLITION - SHEET 3
14	DM-4	MECHANICAL DEMOLITION - SHEET 4
15	A-1	ARCHITECTURAL ELEVATIONS
16	A-2	ARCHITECTURAL PLAN
17	A-3	ARCHITECTURAL ROOF PLAN
18	A-4	ARCHITECTURAL SECTIONS & DETAILS
19	A-5	ARCHITECTURAL DETAILS
20	S-1	STRUCTURAL GENERAL NOTES - SHEET 1
21	S-2	STRUCTURAL GENERAL NOTES - SHEET 2
22	S-3	STRUCTURAL SITE PLAN
23	S-4	RAILING PLAN & DETAILS
24	S-5	STRUCTURAL SECTIONS
25	S-6	PLAN AT EL.'s +15'-3" & -2'-9" & SECTIONS
26	S-7	PLAN AT EL.'s -20'-9" & -42'-3" & SECTIONS
27	S-8	SECTIONS & DETAILS
28	S-9	ROOF HOIST BEAM & SERVICE PLATFORM PLANS, SECTIONS & DETAILS
29	S-10	FLOOR OPENING CLOSURES & CASING SUPPORT DETAILS
30	S-11	STRUCTURAL OPENING MODIFICATION PLANS - EXISTING ROOF & FLOOR SLABS
31	S-12	MISCELLANEOUS STEEL SECTIONS & DETAILS
32	S-13	SOIL BORINGS
33	M-1	MECHANICAL SYMBOL LIST & NOTES
34	M-1A	GENERAL ARRANGEMENT - PLAN
35	M-2	GENERAL ARRANGEMENT - PLANS & SECTIONS
36	M-3	GENERAL ARRANGEMENT - PLANS & SECTIONS
37	M-4	GENERAL ARRANGEMENT - ELEVATION
38	M-5	PIPE DETAILS
39	M-6	PIPE SUPPORT & DETAILS
40	M-7	EQUIPMENT SCHEDULE & PUMPING OPERATING ELEVATION
41	M-8	HEATING & VENTILATION - PLANS & DETAILS
42	E-1	ELECTRICAL SYMBOL LIST
43	E-2	ELECTRICAL SITE PLAN & DETAILS
44	E-3	MCC-PS26 ONE LINE DIAGRAM - SHEET 1
45	E-3A	MCC-PS26 ONE LINE DIAGRAM - SHEET 2
46	E-4	MCC-PS26 ELEVATION
47	E-5	ELECTRICAL CONDUIT PLAN - SHEET 1
48	E-6	ELECTRICAL CONDUIT PLANS - SHEET 2
49	E-7	MAIN PUMP MP-1 CONTROL SCHEMATIC
50	E-8	LOW FLOW PUMP LFP-1 CONTROL SCHEMATIC
51	E-9	VENTILATION SYSTEM CONTROL SCHEMATICS - SHEET 1
52	E-10	VENTILATION SYSTEM CONTROL SCHEMATICS - SHEET 2
53	E-11	CONTROL PANEL SCHEMATIC - SHEET 1
54	E-12	CONTROL PANEL SCHEMATIC - SHEET 2
55	E-13	CONTROL, VENTILATION TRASH RACK PANELS EQUIPMENT LAYOUT
56	E-14	SCADA PANEL SCHEMATIC/WIRING DIAGRAM - SHEET 1
57	E-15	SCADA PANEL SCHEMATIC/WIRING DIAGRAM - SHEET 2
58	E-16	SCADA PANEL SCHEMATIC/WIRING DIAGRAM - SHEET 3
59	E-17	SCADA PANEL SCHEMATIC/WIRING DIAGRAM - SHEET 4
60	E-18	SCADA PANEL SCHEMATIC/WIRING DIAGRAM - SHEET 5
61	E-19	FLOW RECIRCULATION SYSTEM CONTROL SCHEMATICS
62	E-20	TRASH RACK DRIVE CONTROL SCHEMATICS
63	E-21	INTRUSION, GAS MONITORING & FIRE ALARM SCHEMATICS
64	E-22	ELECTRICAL LIGHTING PLAN, PANEL BOARD & FIXTURE SCHEDULE - SHEET 1
65	E-23	ELECTRICAL LIGHTING PLANS - SHEET 2
66	E-24	STAIRWELL (TRASHBIN) JIB CRANE CONTROL SCHEMATIC
67	DE-1	DEMOLITION - ELECTRICAL PLANS & SECTIONS
68	DE-2	DEMOLITION - ELECTRICAL PLANS
69	DE-3	DEMOLITION - ELECTRICAL LONGITUDINAL SECTIONS
70 TO 75		DISTRICT ONE STANDARDS

FOR LIST OF DISTRICT ONE STANDARDS SEE SHEET NO.2
FOR LIST OF IDOT HIGHWAY STANDARDS SEE SHEET NO.2

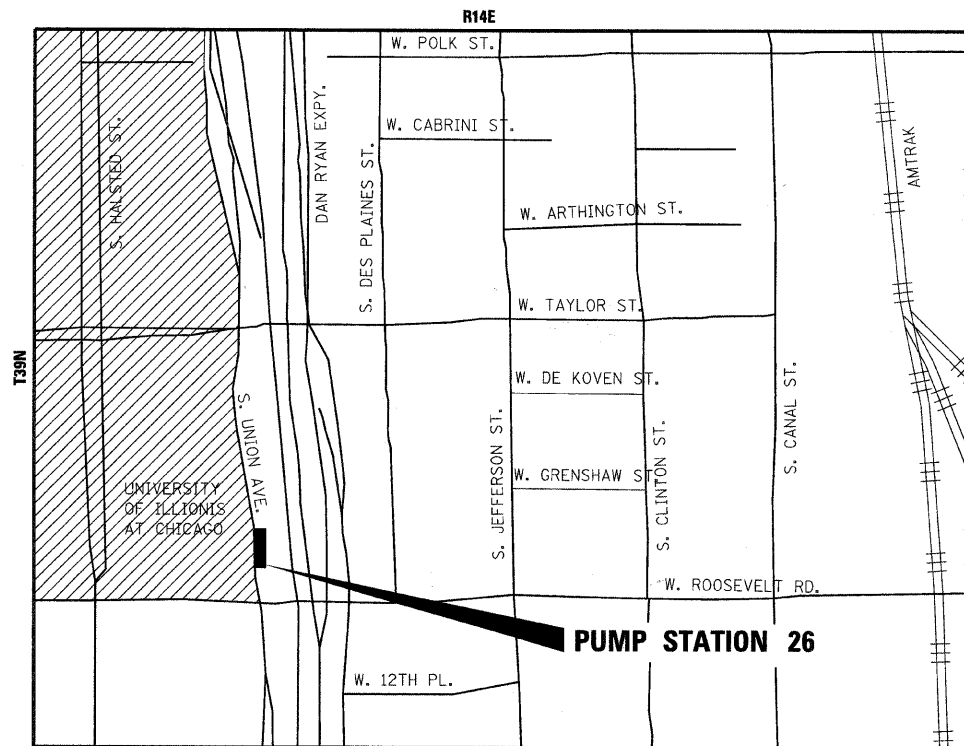
FULL SIZE PLANS HAVE BEEN PREPARED USING STANDARD ENGINEERING SCALES. REDUCED SIZED PLANS WILL NOT CONFORM TO STANDARD SCALES. IN MAKING MEASUREMENTS ON REDUCED PLANS, THE ABOVE SCALES MAY BE USED.

CALL CUAN:
CHICAGO UTILITY ALERT NETWORK
(312)744-7000



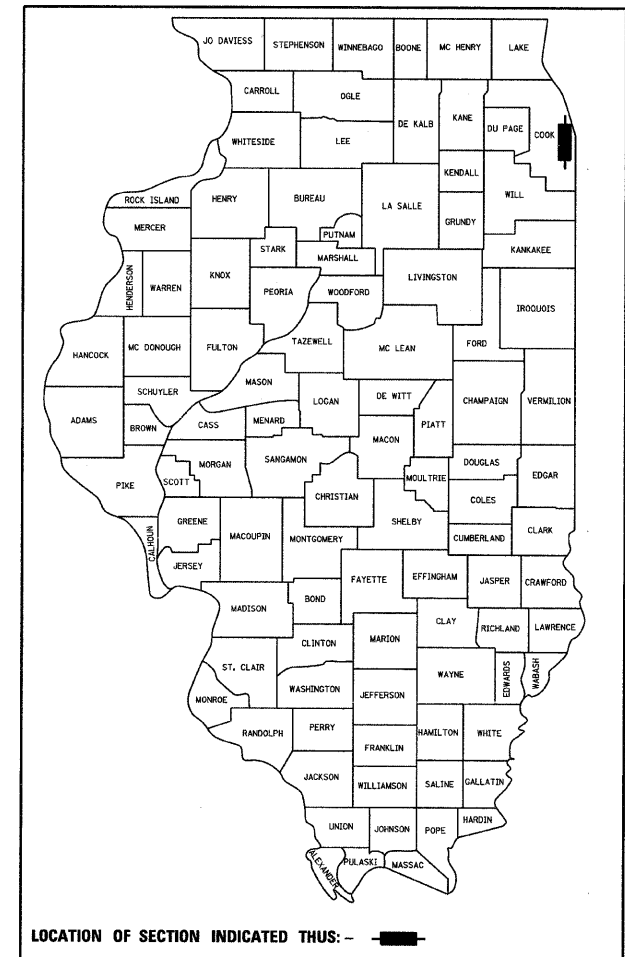
CONTRACT NO. 60828

STATE OF ILLINOIS
DEPARTMENT OF TRANSPORTATION
DIVISION OF HIGHWAYS
**PLANS FOR PROPOSED
PUMP STATION**
PUMP STATION 26 REHABILITATION
ROOSEVELT ROAD AT UNION AVENUE
FAI ROUTE 90/94
SECTION 1999-161-1
PROJECT C-91-411-99
COOK COUNTY



LOCATION MAP

Stanley Consultants Inc.
850 West Higgins Road, Suite 730, Chicago, Illinois 60639-2800
www.stanleygroup.com
Illinois Firm Registration No. 84-02653



ALIA MARKOOD
092-26868
STATE OF ILLINOIS
EXPIRATION DATE: 11-30-2011
DATE: 3-23-2010
SHEETS: DM-1 THRU DM-4,
M-1 THRU M-8

MAJID ZABZWA
092-04730
STATE OF ILLINOIS
EXPIRATION DATE: 11-30-2011
DATE: 3-23-2010
SHEETS: E-1 THRU E-24,
DE-1 THRU DE-3

AARON NEWMAN
091-00609
STATE OF ILLINOIS
EXPIRATION DATE: 11-30-2010
DATE: 3-23-2010
SHEETS: S-1 THRU S-2,
S-5 THRU S-13

DEBASHIS SARKAR
001-019961
STATE OF ILLINOIS
EXPIRATION DATE: 11-30-2010
DATE: 3-23-2010
SHEETS: A-1 THRU A-5

KURT G. FRANK
092-048521
STATE OF ILLINOIS
EXPIRATION DATE: 11-30-2011
DATE: 3-23-2010
SHEETS: G-1 THRU G-5,
G-9 THRU G-10

STATE OF ILLINOIS
DEPARTMENT OF TRANSPORTATION
DIVISION OF HIGHWAYS

SUBMITTED MARCH 24, 2010

Diana M. O'Keefe
DEPUTY DIRECTOR OF HIGHWAYS, REGION ENGINEER

May 7, 2010
Scott E. Stiff, P.E.
ENGINEER OF DESIGN AND ENVIRONMENT

May 7, 2010
Christine M. Reed
DIRECTOR OF HIGHWAYS, CHIEF ENGINEER

**PRINTED BY THE AUTHORITY
OF THE STATE OF ILLINOIS**