

INDEX OF SHEETS

SHEET NO.	DESCRIPTION
1	COVER SHEET
2	INDEX OF SHEETS, HIGHWAY STANDARDS AND GENERAL NOTES
3-19	SUMMARY OF QUANTITIES
20-23	TYPICAL SECTIONS
24-26	SCHEDULE OF QUANTITIES
27	ALIGNMENT, TIES AND BENCHMARKS
28	PAVEMENT AND SHOULDER REMOVAL PLAN
29-31	ROADWAY PLAN AND PROFILE
32-47	STAGING AND TRAFFIC CONTROL PLANS
48	TEMPORARY SHEET PILING PLAN
49	EROSION AND SEDIMENT CONTROL DETAILS
50-53	SUBSURFACE UTILITY INVESTIGATION
54	EXISTING DRAINAGE PLAN
55-56	DRAINAGE PLAN AND PROFILE
57	PLAN - DRAINS FOR EXIST. RETAINING WALL WEEP HOLES
58-66	PLAT OF HIGHWAY
67	IL 171 AT 135TH STREET INTERSECTION DETAILS AND PAVEMENT ELEVATIONS
68	IL 171 INTERSECTION DETAILS
69-70	JOINTING SHEET
71	IL 171 SIDEWALK DETAILS
72	PAVEMENT MARKING AND SIGNING PLANS
73	LANDSCAPING PLANS
74	LONG RUN CREEK GRADING PLANS
75	COMPENSATORY STORAGE GRADING PLAN
76-89	TRAFFIC SIGNAL PLANS
90-127	BRIDGE PLANS
128-130	BORING LOGS
131-137	135TH STREET APPROACH PAVEMENT PLANS
138	DRIVEWAY DETAILS - DISTANCE BETWEEN R.O.W AND FACE OF CURB & EDGE OF SHOULDER GREATER THAN OR EQUAL TO 15' (4.5 m) (BD01)
139	DRIVEWAY DETAILS - DISTANCE BETWEEN R.O.W. AND FACE OF CURB IS LESS THAN 15' (4.5m) (BD02)
140	OUTLET FOR CONCRETE CURB AND GUTTER (BD03)
141	DETAILS FOR CONCRETE MEDIAN TYPE SB (DOWELED) AND CORRUGATED MEDIAN (MODIFIED) (BD05)
142	DETAILS FOR FRAMES AND LIDS ADJUSTMENT WITH MILLING (BD08)
143	DETAILS FOR DEPRESSED CURB & GUTTER AND SHOULDER TREATMENT AT TBT TY. 1 SPL. (BD 34)
144	FIRE HYDRANT TO BE MOVED (BD36)
145	PCC PAVEMENT ROUNDOUTS AT CURB AND GUTTER (BD48)
146	DETAIL FOR CENTERLINE SAWCUT 16' (4.9 m) AND VARIABLE JOINTED PCC PAVEMENT FOR RAMP (BD49)
147	BENCHING DETAIL FOR EMBANKMENT WIDENING (BD51)
148	DETAIL OF PAVEMENT SEPARATION JOINT FOR JOINTED PCC PAVEMENT AT INTERSECTIONS (BD52)
149	DETAIL OF VARIOUS TYPES OF LANE REDUCTION FOR PCC PAVEMENT (BD53)
150	TRAFFIC CONTROL AND PROTECTION FOR SIDE ROADS, INTERSECTIONS, AND DRIVEWAYS (TC10)
151	TYPICAL APPLICATIONS RAISED REFLECTIVE PAVEMENT MARKERS (SNOW-PLow RESISTANT) (TC11)
152	DISTRICT ONE TYPICAL PAVEMENT MARKINGS (TC13)
153	PAVEMENT MARKING LETTERS AND SYMBOLS FOR TRAFFIC STAGING (TC16)
154	DETOUR SIGNING FOR CLOSING STATE HIGHWAYS (TC21)
155	ARTERIAL ROAD INFORMATION SIGN (TC22) AND DRIVEWAY SIGNING (TC26)
156-161	DISTRICT 1 STANDARD TRAFFIC SIGNAL DESIGN DETAILS
162	DISTRICT 1 MAST ARM MOUNTED STREET NAME SIGNS
163-186	CROSS SECTIONS

HIGHWAY STANDARDS

000001-06	STANDARD SYMBOLS, ABBREVIATIONS AND PATTERNS
001001-02	AREAS OF REINFORCEMENT BARS
001006	DECIMAL OF AN INCH AND OF A FOOT
280001-07	TEMPORARY EROSION CONTROL SYSTEMS
353001-04	PCC BASE COURSE WITH HMA BINDER AND SURFACE COURSES
406201-01	MAILBOX TURNOUT
420001-08	PAVEMENT JOINTS
420601-06	24' PCC PAVEMENT
424001-08	PERPENDICULAR CURB RAMPS FOR SIDEWALKS
483001-04	PCC SHOULDER
515001-03	NAME PLATE FOR BRIDGES
542201-02	REINFORCED CONCRETE END SECTIONS FOR PIPE CULVERTS 15" THRU 36" DIA. SKEWED WITH ROADWAY
542301-03	PRECAST REINFORCED CONCRETE FLARED END SECTION
601001-05	PIPE UNDERDRAINS
601101-02	CONCRETE HEADWALL FOR PIPE DRAIN
602001-02	CATCH BASIN TYPE A
602011-02	CATCH BASIN TYPE C
602301-04	INLET TYPE A
602401-03	MANHOLE TYPE A
604086-03	FRAME AND GRATE TYPE 23
604091-03	FRAME AND GRATE TYPE 24
606001-06	CONCRETE CURB TYPE B AND COMBINATION CONCRETE CURB AND GUTTER
630001-10	STEEL PLATE BEAM GUARDRAIL
630201-06	PCC/HMA STABILIZATION AT STEEL PLATE BEAM GUARDRAIL
631031-14	TRAFFIC BARRIER TERMINAL, TYPE 6
701001-02	OFF-RD OPERATIONS, 2L, 2W, 15' (4.5 M) TO 24' (600 MM) FROM PAVEMENT EDGE
701006-05	OFF-RD OPERATIONS, 2L, 2W, 15' (4.5 M) TO 24' (600 MM) FROM PAVEMENT EDGE
701011-04	OFF-RD MOVING OPERATIONS, 2L, 2W DAY ONLY
701101-05	OFF-RD OPERATIONS, MULTILANE, 15' (4.5 M) TO 24' (600 MM) FROM PAVEMENT EDGE
701301-04	LANE CLOSURE, 2L, 2W, SHORT TIME OPERATIONS
701306-03	LANE CLOSURE, 2L, 2W, SLOW MOVING OPERATIONS DAY ONLY FOR SPEEDS >= 45 MPH
701311-03	LANE CLOSURE 2L, 2W MOVING OPERATIONS DAY ONLY
701421-07	LANE CLOSURE, MULTILANE, DAY OPERATIONS ONLY, FOR SPEEDS >= 45 MPH TO 55 MPH
701501-06	URBAN LANE CLOSURE 2L, 2W, UNDIVIDED
701502-06	URBAN LANE CLOSURE, 2L, 2W, WITH BIDIRECTIONAL LEFT TURN LANE
701701-10	URBAN LANE CLOSURE, MULTILANE INTERSECTION
701801-06	SIDEWALK, CORNER OR CROSSWALK CLOSURE
701901-05	TRAFFIC CONTROL DEVICES
704001-08	TEMPORARY CONCRETE BARRIER
725001	OBJECT AND TERMINAL MARKERS
720001-01	SIGN PANEL MOUNTING DETAILS
720006-04	SIGN PANEL ERECTION DETAILS
780001-05	TYPICAL PAVEMENT MARKINGS
782006	GUARDRAIL AND BARRIER WALL REFLECTOR MOUNTING DETAILS
814001-03	HANDHOLES
814006-02	DOUBLE HANDHOLES
857001-01	STANDARD PHASE DESIGNATION DIAGRAMS AND PHASE SEQUENCES
877001-06	STEEL MAST ARM ASSEMBLY AND POLE 16' AND 55'
878001-10	CONCRETE FOUNDATION DETAILS
880001-01	SPAN WIRE MOUNTED SIGNALS AND FLASHING BEACON INSTALLATION
880006-1	TRAFFIC SIGNAL MOUNTING DETAILS
886001-01	DETECTOR LOOP INSTALLATIONS

420401-12 PAVEMENT CONNECTOR (PCC) FOR BRIDGE APPROACH SLAB

GENERAL NOTES

- THE CONTRACTOR SHALL COORDINATE CONSTRUCTION ACTIVITIES WITH UTILITY COMPANIES AND LOCAL AGENCIES IN WILL AND COOK COUNTY.
- THE LOCATIONS OF EXISTING UTILITIES SHOWN ON THE PLANS ARE BASED ON FIELD INVESTIGATIONS AND THE BEST INFORMATION AVAILABLE, BUT THEY ARE NOT GUARANTEED. IT SHALL BE THE CONTRACTOR'S RESPONSIBILITY TO ASCERTAIN THEIR EXACT LOCATIONS FROM THE UTILITY COMPANIES AND BY FIELD INSPECTION.
- THE CONTRACTOR WILL NOT BE ALLOWED TO SET UP A YARD OR FIELD OFFICE ON STATE PROPERTY WITHOUT WRITTEN PERMISSION FROM THE DEPARTMENT.
- ALL ELEVATIONS REFER TO U.S.G.S. MEAN SEA LEVEL DATUM. ERIC.CAMPOS@ILLINOIS.GOV
- TWO WEEKS PRIOR TO PLACEMENT OF PERMANENT PAVEMENT MARKINGS, THE ENGINEER SHALL CONTACT MR. GARY JUICIOUS, ARTERIAL TRAFFIC OPERATION ENGINEER AT (847) 705-4411 OR ERIC CAMPOS, IDOT'S AREA FIELD SUPERVISOR AT (815) 485-6975 OR (815) 485-6975 OR.
- THE RESIDENT ENGINEER SHALL CONTACT THE TRAFFIC CONTROL SUPERVISOR AT (847) 705-4470 A MINIMUM OF 72 HOURS PRIOR TO THE PLACEMENT OF ANY TEMPORARY TRAFFIC CONTROL DEVICES.
- 10' TRANSITIONS SHALL BE USED TO MATCH PROPOSED CURB & GUTTER AND MEDIAN ITEMS OF WORK TO EXISTING CURBS & GUTTERS AND MEDIAN IN THE FIELD, UNLESS OTHERWISE SHOWN. THE TRANSITIONS SHALL BE PAID FOR AT THE CONTRACT UNIT PRICE FOR THE PROPOSED ITEMS OF WORK SPECIFIED.
- THIS PROJECT REQUIRES A U.S. ARMY CORPS OF ENGINEERS (USACE) 404 PERMIT THAT WILL BE SECURED BY THE DEPARTMENT. AS A CONDITION OF THIS PERMIT, THE CONTRACTOR WILL NEED TO SUBMIT AN IN-STREAM WORK PLAN (INCLUDING WORK IN WETLANDS) TO THE DEPARTMENT FOR APPROVAL. GUIDELINES ON ACCEPTABLE IN-STREAM WORK TECHNIQUES (INCLUDING WORK IN WETLANDS) CAN BE FOUND ON THE USACE WEB SITE. THE USACE DEFINES AND DETERMINES IN-STREAM WORK (WHICH INCLUDES WORK WITHIN WETLANDS). THE COST OF ALL MATERIALS AND LABOR NECESSARY TO COMPLY WITH THE ABOVE PROVISIONS TO PREPARE AND IMPLEMENT AN IN-STREAM WORK PLAN (INCLUDING WORK WITHIN THE WETLANDS) WILL NOT BE PAID FOR SEPARATELY, BUT SHALL BE CONSIDERED AS INCLUDED IN THE UNIT BID PRICES OF THE CONTRACT AND NO ADDITIONAL COMPENSATION WILL BE ALLOWED.
- THE DEPARTMENT HAS NOT OBTAINED ANY PERMITS FOR OFF SITE BORROW, WASTE, USE (BWU) AREAS. PRIOR TO WORKING IN BWU AREAS, IF THE CONTRACTOR CHOOSES TO USE ACTIVITIES REQUIRING PERMITS, IT IS THE CONTRACTOR'S RESPONSIBILITY TO SECURE THE PROPER PERMITS. IN ADDITION TO THE BORROW REVIEW (BDE 2289) AND USE/WASTE REVIEW (BDE 2290) SUBMITTALS, THE CONTRACTOR WILL NEED TO SUBMIT AN EROSION AND SEDIMENT CONTROL (ESC) PLAN FOR EVERY BWU SITE TO THE DEPARTMENT FOR ACCEPTANCE. GUIDELINES FOR ACCEPTABLE BWU PRACTICES CAN BE FOUND IN SECTION 11.G.1 AND 2 OF THE SWPPP. THE COST OF ALL MATERIALS AND LABOR NECESSARY TO COMPLY WITH THE ABOVE PROVISIONS TO PREPARE AND IMPLEMENT ESC PLANS WILL NOT BE PAID FOR SEPARATELY, BUT SHALL BE CONSIDERED AS INCLUDED IN THE UNIT BID PRICES OF THE CONTRACT AND NO ADDITIONAL COMPENSATION WILL BE ALLOWED.
- FOR WORK OUTSIDE THE LIMITS OF BRIDGE APPROACH PAVEMENT, ALL REFERENCES IN THE HIGHWAY STANDARDS AND STANDARD SPECIFICATIONS FOR REINFORCEMENT, DOWEL BARS AND TIE BARS IN PAVEMENT, SHOULDER, CURB GUTTER, COMBINATION CURB AND GUTTER AND MEDIAN, AND MEDIAN CHAIR SUPPORTS FOR CRC PAVEMENTS, SHALL BE EPOXY COATED, UNLESS NOTED ON THE PLANS.
- TO CONSERVE THE NORTHERN LONG-EARED BAT SPECIES, TREES WILL NOT BE CLEARED FROM APRIL 1 THROUGH SEPTEMBER 30. IN ADDITION TO THE DATE RESTRICTION ON TREE CLEARING, IMPACTS TO TREES SHALL BE MITIGATED IN ACCORDANCE WITH IDOT DEPARTMENT POLICY D&E-18 PRESERVATION AND REPLACEMENT OF TREES, WITH THE IMPLEMENTATION OF BOTH CONSERVATION MEASURES, THE PROJECT IS NOT LIKELY TO ADVERSELY AFFECT THE NORTHERN LONG-EARED BAT.
- ALL EXCAVATED SOILS SHALL BE USED WITHIN THE PROJECT LIMITS AS TOPSOIL OR FILL.
- COORDINATE CONSTRUCTION SCHEDULE AND TRUCK ACCESS WITH KOHL'S DEPARTMENT STORES AND EDGEWATER COMMERCIAL REAL ESTATE SERVICES - 2215 YORK RD. SUITE 503, OAK BROOK, IL.
- AGGREGATE SUBGRADE IMPROVEMENT (CU YD) HAS BEEN PROVIDED FOR USE AT THE LOCATIONS INDICATED FOR SOILS THAT TEND TO BE UNSTABLE AND/OR UNSUITABLE. THE ACTUAL NEED FOR REMOVAL AND REPLACEMENT WITH AGGREGATE SUBGRADE IMPROVEMENT (CU YD) WILL BE DETERMINED IN THE FIELD AT THE TIME OF CONSTRUCTION BY THE GEOTECHNICAL ENGINEER. ALL POTENTIALLY UNSTABLE SOILS SHOULD BE TESTED WITH A STATIC CONE PENETROMETER AND TREATED IN ACCORDANCE WITH ARTICLE 301.04 (01/01/2016) AND THE IDOT SUBGRADE STABILITY MANUAL (05/01/2015). IF UNSTABLE AND/OR UNSUITABLE SOIL IS NOT ENCOUNTERED, THEN THE QUANTITY SHALL BE DEDUCTED AND NO ADDITIONAL COMPENSATION WILL BE DUE TO THE CONTRACTOR.
- BEFORE STARTING ANY EXCAVATION, THE CONTRACTOR SHALL CALL "JULIE" AT 800-892-0123 OR 811 FOR FIELD LOCATIONS OF BURIED ELECTRIC, TELEPHONE, AND GAS FACILITIES. (48-HOUR NOTIFICATION IS REQUIRED)

RECURRING SPECIAL PROVISION QUALITY CONTROL/QUALITY ASSURANCE OF CONCRETE MIXTURES SHALL ALSO APPLY TO THE INTERNALLY CURING CONCRETE WITH LIGHT AGGREGATE MIXTURE USED FOR THE DECK.

Rev. 6-1-16

3/18/2016

HBM
ENGINEERING GROUP, LLC
CONSULTING & DESIGN
INSPECTION & TESTING
RESEARCH & TESTING

4415 WEST HARRISON ST.
SUITE 231
MILLSBIE, IL 60142
PHONE: (708) 234-0900
FAX: (708) 234-0901

DESIGNED - PH	REVISED -
DRAWN - PH	REVISED -
CHECKED - JMG	REVISED -
DATE - 03/18/2016	REVISED -

DATE - 03/18/2016	REVISED -
-------------------	-----------

STATE OF ILLINOIS
DEPARTMENT OF TRANSPORTATION

INDEX OF SHEETS, HIGHWAY STANDARDS AND
GENERAL NOTES

SHEET NO. 1 OF 1 SHEETS

F.A.P. DATE	SECTION	COUNTY	TOTAL SHEETS	SHEET NO.
5/7	C-1-B	WILL & COOK	186	2
			CONTRACT NO. 60H21	

ILLINOIS FED. AID PROJECT

CONSTRUCTION CODE

CODE NO.	ITEM	UNIT	TOTAL QUANTITY	CONSTRUCTION CODE															
				WILL COUNTY	WILL COUNTY	WILL COUNTY	COOK COUNTY	WILL COUNTY	COOK COUNTY	WILL COUNTY	COOK COUNTY								
				80% FED 20% STATE	80% FED 20% STATE	80% FED 20% STATE	80% FED 20% STATE	80% FED 20% STATE	80% FED 20% VILLAGE OF LEMONT	100% NW HOMER FIRE PROTECTION DISTRICT	100% NW HOMER FIRE PROTECTION DISTRICT								
ROADWAY	BRIDGE	BRIDGE	ROADWAY	TRAFFIC SIGNALS	TRAFFIC SIGNALS	TRAFFIC SIGNALS	TRAFFIC SIGNALS												
0003	0010	0014	0003	0021	0021	0021	0021												
31200502	STABILIZED SUBBASE - HOT-MIX ASPHALT, 4 1/2"	SQ YD	10,059	5671			4388												
40600290	BITUMINOUS MATERIALS (TACK COAT)	POLIND	2280	1070			1210												
40603340	HOT-MIX ASPHALT SURFACE COURS, MIX "D", N70	TON	245	165			80												
42000080	PAVEMENT CONNECTOR (PCC) FOR BRIDGE APPROACH SLAB	SQ YD	576	576															
42000401	PORTLAND CEMENT CONCRETE PAVEMENT 9" (JOINTED)	SQ YD	9039	5010			4029												
42300200	PORTLAND CEMENT CONCRETE DRIVEWAY PAVEMENT, 6 INCH	SQ YD	112	112															
42300400	PORTLAND CEMENT CONCRETE DRIVEWAY PAVEMENT, 8 INCH	SQ YD	1055	350			705												
42400200	PORTLAND CEMENT CONCRETE SIDEWALK 5 INCH	SQ FT	4456	1061			3395												
42400800	DETECTABLE WARNINGS	SQ FT	81				81												
44000100	PAVEMENT REMOVAL	SQ YD	9231	4256			4975												
44000200	DRIVEWAY PAVEMENT REMOVAL	SQ YD	678	678															
44000500	COMBINATION CURB AND GUTTER REMOVAL	FOOT	2621	1367			1254												
44000600	SIDEWALK REMOVAL	SQ FT	2536				2536												
44003510	MEDIAN REMOVAL PARTIAL DEPTH	SQ FT	1150	1150															
44004250	PAVED SHOULDER REMOVAL	SQ YD	1680	1537			143												
48101202	AGGREGATE SHOULDERS, TYPE B	CU YD	229	146			83												
48101620	AGGREGATE SHOULDERS, TYPE B 10"	SQ YD	36	36															

Rev. 6-1-16

Rev.

3/18/2016

HBM
ENGINEERING GROUP, LLC
CONSULTING & DESIGN
INSPECTION & TESTING
RESEARCH & TESTING
4415 WEST HARRISON ST.
SUITE 231
NILES, ILL. 60182
TEL: (708) 238-0900
FAX: (708) 238-0901

DESIGNED - JMG	REVISED -
DRAWN - HA	REVISED -
CHECKED - MA	REVISED -
DATE - 03/18/2016	REVISED -

STATE OF ILLINOIS
DEPARTMENT OF TRANSPORTATION

SUMMARY OF QUANTITIES

SHEET NO. 3 OF 17 SHEETS

F.A.P. RTE.	SECTION	COUNTY	TOTAL SHEETS	SHEET NO.
577	C-1-B	WILL & COOK	166	5
CONTRACT NO. 60H21			ILLINOIS FED. AID PROJECT	

CONSTRUCTION CODE

CODE NO.	ITEM	UNIT	TOTAL QUANTITY	CONSTRUCTION CODE									
				WILL COUNTY	WILL COUNTY	WILL COUNTY	COOK COUNTY	WILL COUNTY	COOK COUNTY	WILL COUNTY	COOK COUNTY		
				80% FED 20% STATE	80% FED 20% STATE	80% FED 20% STATE	80% FED 20% STATE	80% FED 20% STATE	80% FED 20% VILLAGE OF LEMONT	100% NW HOMER FIRE PROTECTION DISTRICT	100% NW HOMER FIRE PROTECTION DISTRICT		
				ROADWAY 0003	BRIDGE 0010 S.N. 099-0537	BRIDGE 0014 S.N. 099-3028	ROADWAY 0003	TRAFFIC SIGNALS 0021	TRAFFIC SIGNALS 0021	TRAFFIC SIGNALS 0021	TRAFFIC SIGNALS 0021		
				<i>URBAN</i>									
48300400	PORTLAND CEMENT CONCRETE SHOULDERS 9"	SQ YD	604	466			138						
48301000	PROTECTIVE COAT	SQ YD	604	466			138						
50100100	REMOVAL OF EXISTING STRUCTURES	EACH	1		1								
50104400	CONCRETE HEADWALL REMOVAL	EACH	2				2						
50200100	STRUCTURE EXCAVATION	CU YD	232		232								
50200300	COFFERDAM EXCAVATION	CU YD	353		353								
50201121	COFFERDAM (TYPE 2) (LOCATION - 1)	EACH	1		1								
50300100	FLOOR DRAINS	EACH	26		26								
50300225	CONCRETE STRUCTURES	CU YD	423.1		400.3	22.8							
50300255	CONCRETE SUPERSTRUCTURE	CU YD	702.4		699	3.4							
50300260	BRIDGE DECK GROOVING	SQ YD	2871		2645	226							
50300265	SEAL COAT CONCRETE	CU YD	204.3		204.3								
50300300	PROTECTIVE COAT	SQ YD	3198		2949	249							
50301350	CONCRETE SUPERSTRUCTURE (APPROACH SLAB)	CU YD	337.2		235.6	101.6							
50400905	FURNISHING AND ERECTING PRECAST PRESTRESSED CONCRETE I-BEAMS, 42 IN.	FOOT	3395		3395								

Rev. 6-1-16

3/18/2016

HBM
ENGINEERING GROUP, LLC
CONSULTING & DESIGN
INSPECTION & TESTING
RESEARCH & TESTING

DESIGNED - JMG	REVISED -
DRAWN - HA	REVISED -
CHECKED - MA	REVISED -
DATE - 03/18/2016	REVISED -

STATE OF ILLINOIS
DEPARTMENT OF TRANSPORTATION

SUMMARY OF QUANTITIES

SHEET NO. 4 OF 17 SHEETS

F.A.P. RTE. 577	SECTION C-1-B	COUNTY WILL & COOK	TOTAL SHEETS 186	SHEET NO. 5
CONTRACT NO. 60H21				
ILLINOIS FED. AID PROJECT				

CONSTRUCTION CODE

CODE NO.	ITEM	UNIT	TOTAL QUANTITY	CONSTRUCTION CODE									
				WILL COUNTY	WILL COUNTY	WILL COUNTY	COOK COUNTY	IL RTE 171 AND 135TH	IL RTE 171 AT LONG RUN MARKET	IL RTE 171 AND 135TH (EVP)	IL RTE 171 AT LONG RUN MARKET (EVP)		
				80% FED 20% STATE	80% FED 20% STATE	80% FED 20% STATE	80% FED 20% STATE	80% FED 20% STATE	80% FED 20% STATE	100% NW HOMER FIRE PROTECTION DISTRICT	100% NW HOMER FIRE PROTECTION DISTRICT		
				ROADWAY 0003	BRIDGE 0010	BRIDGE 0014	ROADWAY 0003	TRAFFIC SIGNALS 0021	TRAFFIC SIGNALS 0021	TRAFFIC SIGNALS 0021	TRAFFIC SIGNALS 0021		
					S.N. 099-0537	S.N. 099-3028							
Z0004638	PAVEMENT BREAKING	SQ YD	3500	700			2800						
Z0004640	PAVED SHOULDER BREAKING	SQ YD	256	256									
Z0013798	CONSTRUCTION LAYOUT	LSUM	1	0.5			0.5						
Z0030850	TEMPORARY INFORMATION SIGNING	SQ FT	127.1					76.4	50.7				
Z0033056	OPTIMIZE TRAFFIC SIGNAL SYSTEM	EACH	1						1				
Z0046304	PIPE UNDERDRAINS FOR STRUCTURES 4"	FOOT	254		254								
Z0056620	STORM SEWER (WATER MAIN REQUIREMENTS) 30 INCH	FOOT	155				155						
Z0056622	STORM SEWER (WATER MAIN REQUIREMENTS) 36 INCH	FOOT	424				424						
Z0062456	TEMPORARY PAVEMENT	SQ YD	2731	756			1975						
Z0064800	SELECTIVE CLEARING	UNIT	10	10									
Z0066400	STABILIZED DRIVEWAYS 6"	SQ YD	50	50									
Z0073510	TEMPORARY TRAFFIC SIGNAL TIMING	EACH	1						1				
Z0076600	TRAINEES	HOUR	1500	1500									
Z0076604	TRAINEES-TRAINING PROGRAM GRADUATE	HOUR	1500	1500									
X0200001	ROLLER COMPACTED CONCRETE BASE COURSE, 7"	SQ YD	2170	1460			710						

URBAN

- * SPECIALTY ITEM
- ** CONSTRUCTION CODE 0042

HBM
 415 WEST HARRISON ST.
 SUITE 211
 HILLSDALE, IL 60182
 PHONE: (708) 236-0900
 FAX: (708) 236-0901

DESIGNED - JMG
 DRAWN - HA
 CHECKED - MA
 PLOT DATE = 03/11/2016

REVISED -
 REVISED -
 REVISED -
 REVISED -

DATE - 03/18/2016

STATE OF ILLINOIS
 DEPARTMENT OF TRANSPORTATION

SUMMARY OF QUANTITIES

SHEET NO. 17 OF 17 SHEETS

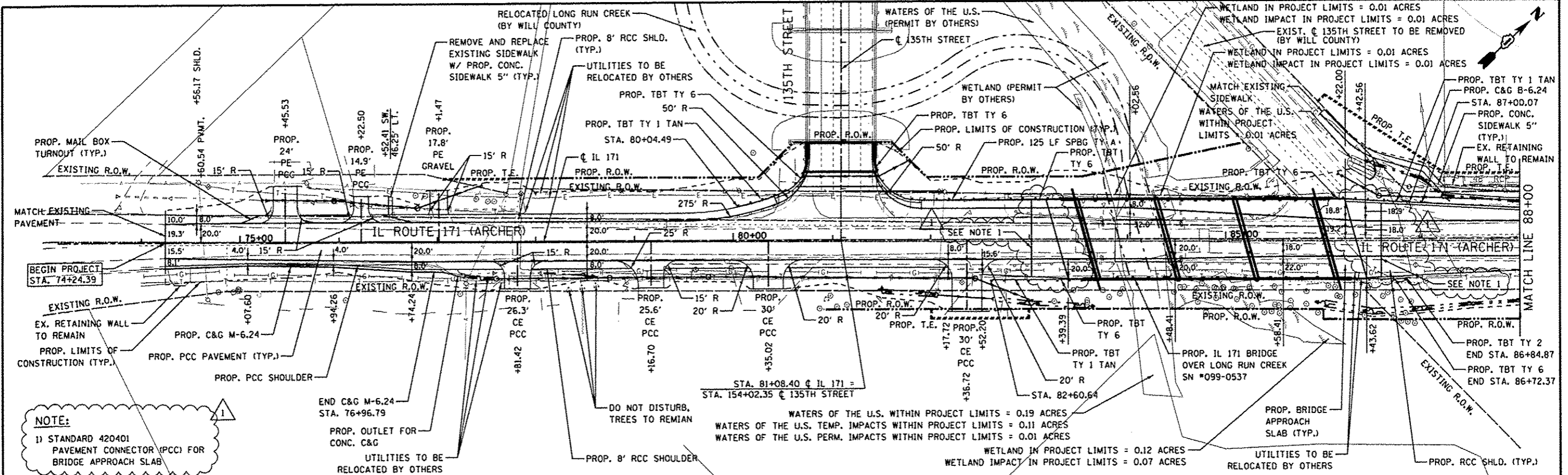
F.A.P. RTE.	SECTION	COUNTY	TOTAL SHEETS	SHEET NO.
577	C-1-B	WILL & COOK	186	19
CONTRACT NO. 60H21			ILLINOIS FED. AID PROJECT	

Rev. 6-1-16

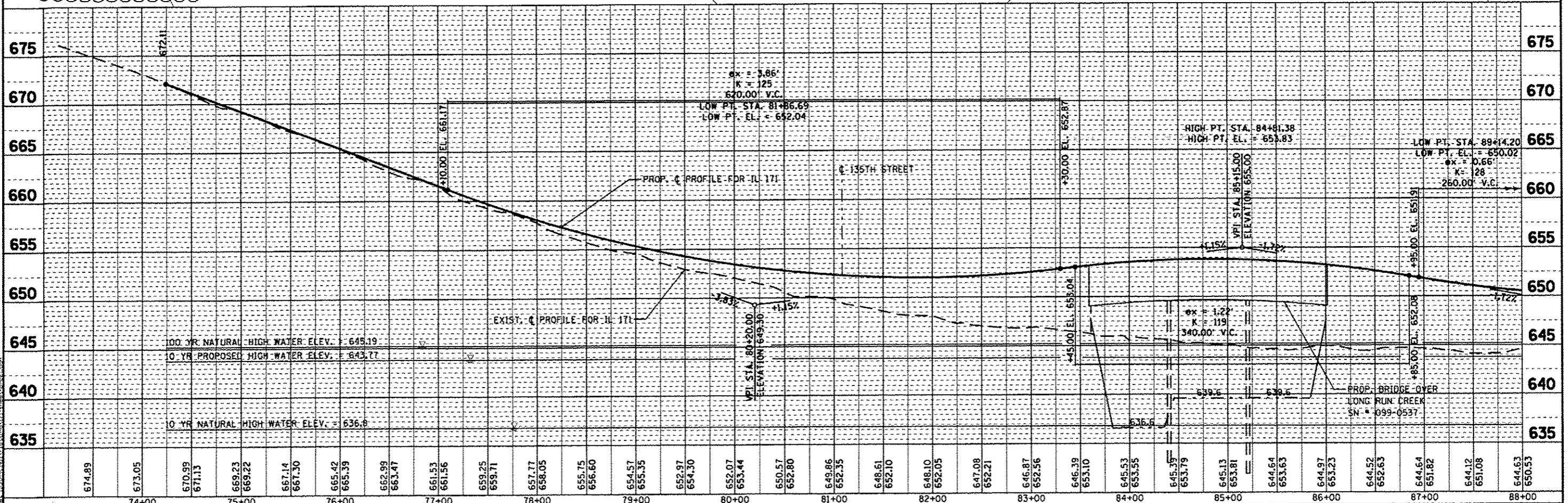
Rev.

DATE	
BY	
REVISIONS	
NO.	
DATE	
BY	
DESCRIPTION	

DATE	
BY	
REVISIONS	
NO.	
DATE	
BY	
DESCRIPTION	



NOTE:
 1) STANDARD 420401 PAVEMENT CONNECTOR (PCC) FOR BRIDGE APPROACH SLAB



PARSONS BRINCKERHOFF
 230 West Monroe St., Suite 900
 Chicago, IL 60606, (312) 782-8160

USER NAME	clanac	DESIGNED	CJC	REVISED	5/24/2016 CJC
PLT SCALE	1" = 50'	DRAWN	CJC	REVISED	
PLT DATE	24-MAY-2016	CHECKED	RFT	REVISED	
		DATE	3/18/2016	REVISED	

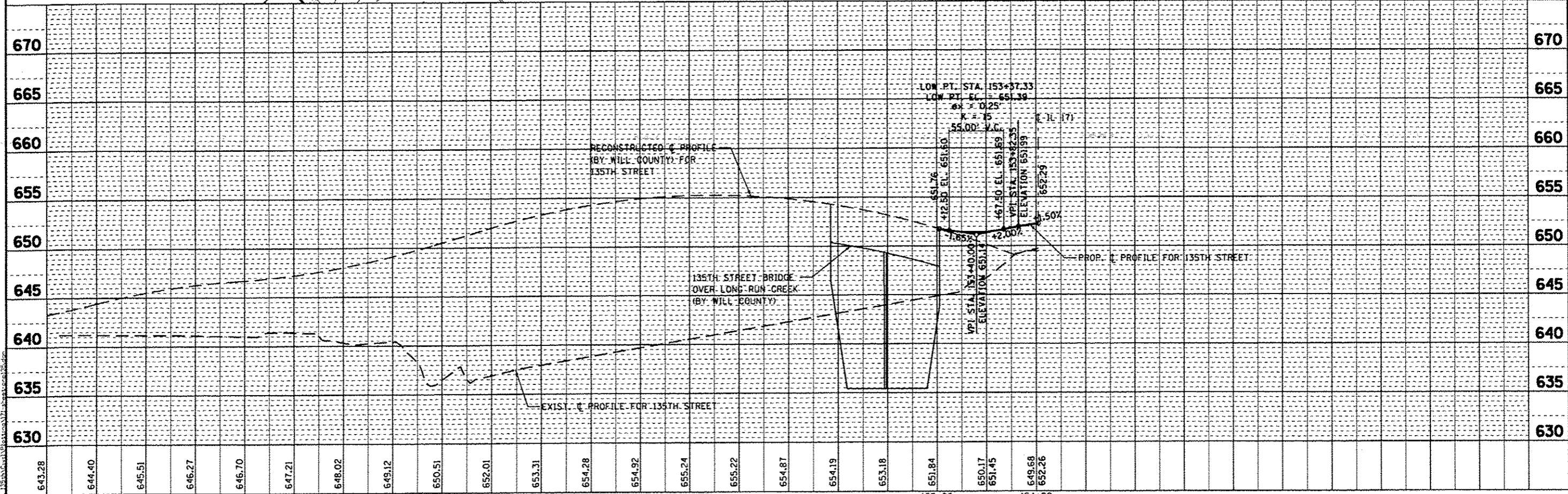
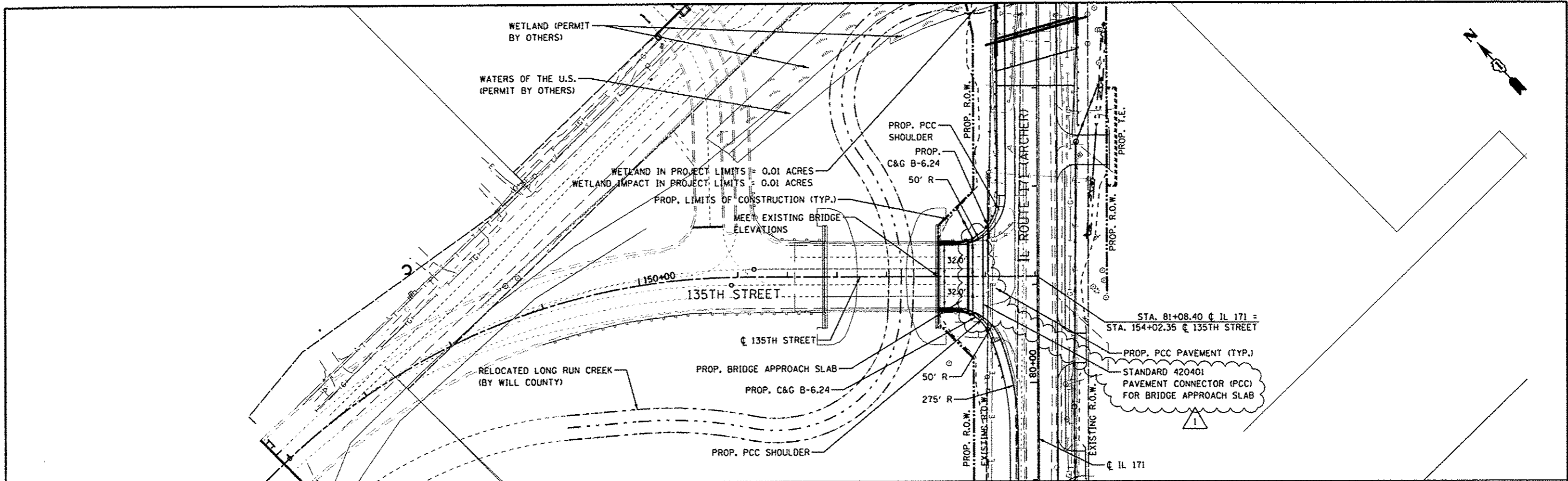
STATE OF ILLINOIS
 DEPARTMENT OF TRANSPORTATION

IL 171 PLAN AND PROFILE
 SCALE: 1" = 50'
 SHEET NO. 1 OF 3 SHEETS
 STA. 74+24.39 TO STA. 88+00.00

F.A.P. RTE.	SECTION	COUNTY	TOTAL SHEETS	SHEET NO.
577	C-1-B	WILL/COOK	186	29
CONTRACT NO. 60H21			ILLINOIS FED. AID PROJECT	

DATE	
BY	
DESIGNED	
DRAWN	
CHECKED	
DATE	
NOTE BOOK NO.	
FILE NAME	

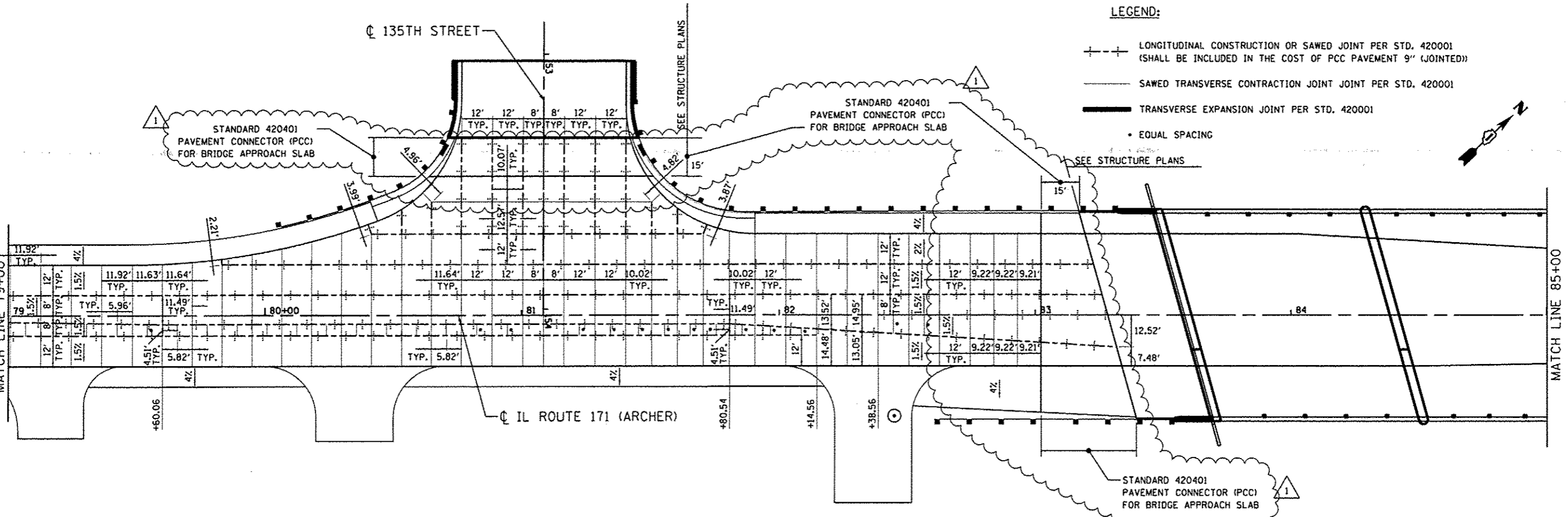
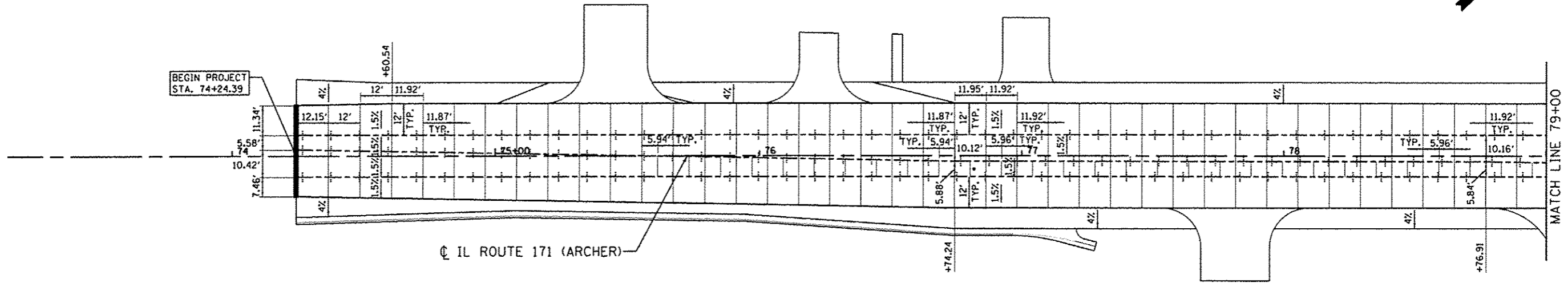
DATE	
BY	
DESIGNED	
DRAWN	
CHECKED	
DATE	
NOTE BOOK NO.	
FILE NAME	



PARSONS BRINCKERHOFF 230 West Monroe St. Suite 900 Chicago, IL 60606, (312) 782-8150	USER NAME = clemsonc	DESIGNED - CJC	REVISED - 5/24/2016 CJC	STATE OF ILLINOIS DEPARTMENT OF TRANSPORTATION	135TH STREET PLAN AND PROFILE			F.A.P. RTE. = 577	SECTION = C-1-B	COUNTY = WILL/COOK	TOTAL SHEETS = 186	SHEET NO. = 31
	PLT SCALE = 1" = 50'	CHECKED - RFT	REVISOR -					SCALE: 1" = 50'	SHEET NO. 3 OF 3 SHEETS	STA. 153+02.62 TO STA. 154+02.35	CONTRACT NO. 60H21	
	PLT DATE = 24-MAY-2016	DATE = 3/18/2016	REVISOR -					ILLINOIS FED. AID PROJECT				

NOTES:

1. PLACE LONGITUDINAL CONSTRUCTION JOINT ALONG CURB AND GUTTERS AS SHOWN ON THE TYPICAL SECTIONS.
2. PLACE TRANSVERSE CONTRACTION AND EXPANSION JOINTS ON SHOULDERS PER STD. 483001. MATCH ALL CORRESPONDING JOINTS IN THE ADJACENT PAVEMENT.



PARSONS BRINCKERHOFF
 250 West Monroe St, Suite 900
 Chicago, IL 60606, (312) 782-8150

USER NAME = c1omansc
 PLOT SCALE = 1" = 20'
 PLOT DATE = 25-MAY-2016

DESIGNED - CJC
 DRAWN - CJC
 CHECKED - RFT
 DATE - 3/26/2016

REVISED 5/25/2016 CJC
 REVISED -
 REVISED -
 REVISED -

STATE OF ILLINOIS
 DEPARTMENT OF TRANSPORTATION

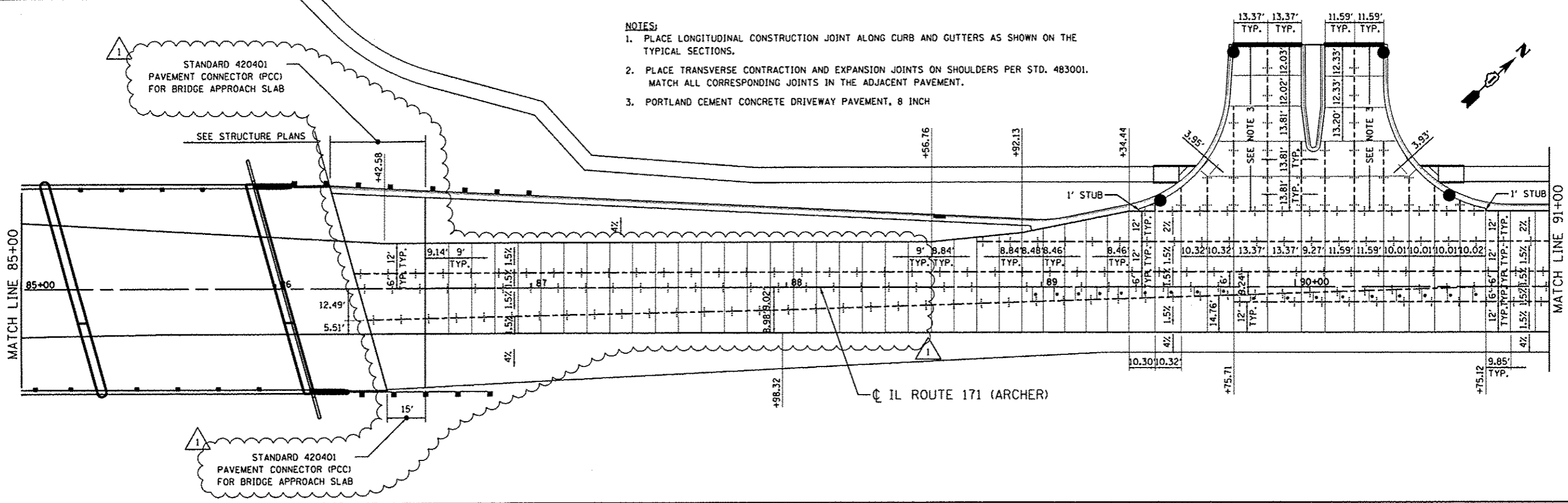
IL 171 JOINTING PLAN

SCALE: 1" = 20' SHEET NO. 1 OF 2 SHEETS STA. 74+24.39 TO STA. 85+00.00

F.A.P. RTE.	SECTION	COUNTY	TOTAL SHEETS	SHEET NO.
577	C-1-B	WILL/COOK	186	69
CONTRACT NO. 60H21				
ILLINOIS FED. AID PROJECT				

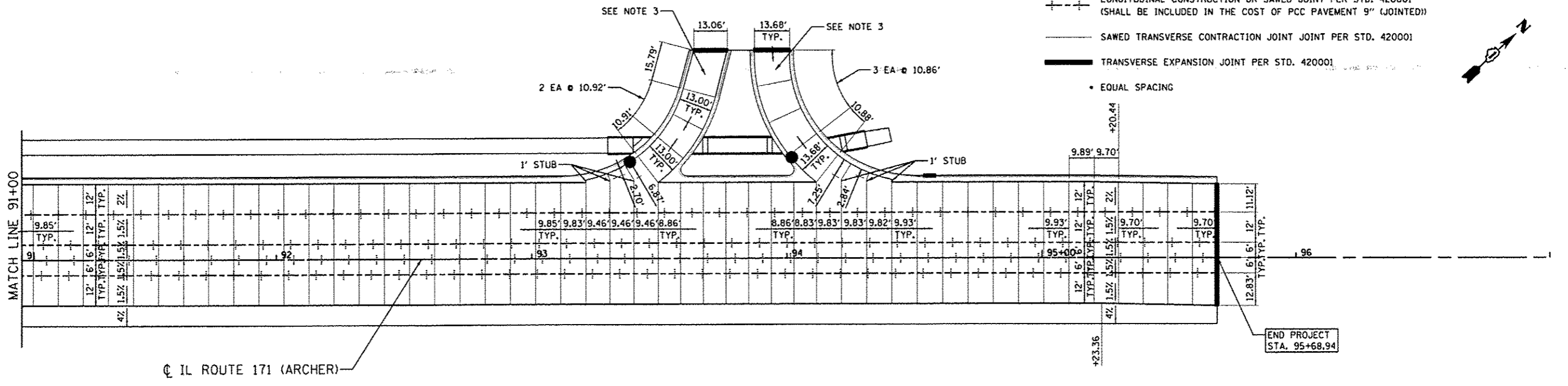
NOTES:

1. PLACE LONGITUDINAL CONSTRUCTION JOINT ALONG CURB AND GUTTERS AS SHOWN ON THE TYPICAL SECTIONS.
2. PLACE TRANSVERSE CONTRACTION AND EXPANSION JOINTS ON SHOULDERS PER STD. 483001. MATCH ALL CORRESPONDING JOINTS IN THE ADJACENT PAVEMENT.
3. PORTLAND CEMENT CONCRETE DRIVEWAY PAVEMENT, 8 INCH



LEGEND:

- LONGITUDINAL CONSTRUCTION OR SAWS JOINT PER STD. 420001 (SHALL BE INCLUDED IN THE COST OF PCC PAVEMENT 9" (JOINTED))
- SAWS TRANSVERSE CONTRACTION JOINT PER STD. 420001
- TRANSVERSE EXPANSION JOINT PER STD. 420001
- EQUAL SPACING



1:24:58:27.1 L 171 1:24:58:27.1

**PARSONS
BRINCKERHOFF**
290 West Monroe St., Suite 900
Chicago, IL 60606, (312) 782-8160

USER NAME : clemsonc
PLOT SCALE : 1" = 20'
PLOT DATE : 24-MAY-2016

DESIGNED - CJC
DRAWN - CJC
CHECKED - RFT
DATE - 3/26/2016

REVISED - 5/24/2016 CJC
REVISED -
REVISED -
REVISED -

STATE OF ILLINOIS
DEPARTMENT OF TRANSPORTATION

IL 171 JOINTING PLAN

SCALE: 1" = 20' SHEET NO. 2 OF 2 SHEETS STA. 85+00.00 TO STA. 95+68.94

F.A.P. RTE. 577	SECTION C-1-B	COUNTY WILL/COOK	TOTAL SHEETS 186	SHEET NO. 70
CONTRACT NO. 60H21				ILLINOIS FED. AID PROJECT