

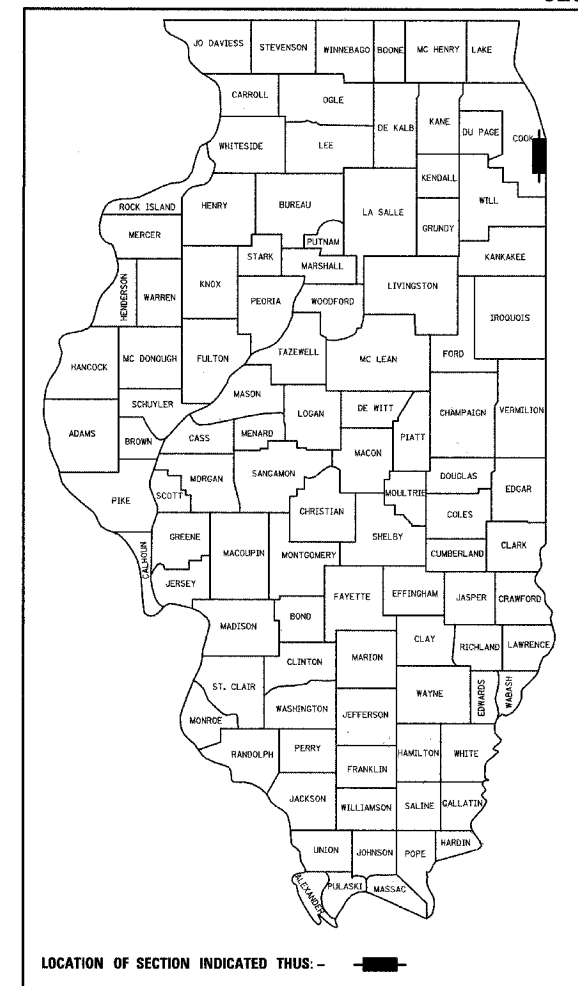
STATE OF ILLINOIS
DEPARTMENT OF TRANSPORTATION
DIVISION OF HIGHWAYS

PROPOSED HIGHWAY PLANS

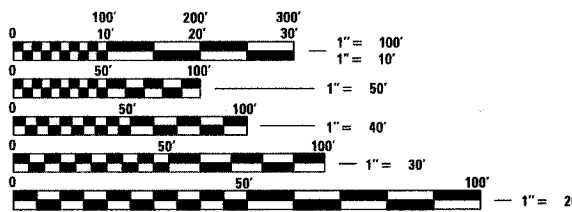
F.A.I. ROUTE 94 (DAN RYAN EXPRESSWAY)
SECTION (2005-014L)
CONVENTIONAL LIGHTING
(FROM EAST OF HALSTED ST. TO EAST OF UNION
PACIFIC RR AND AT MARTIN LUTHER KING DR. ACCIDENT INVESTIGATION SITE)

~~PROJECT NO.~~
COOK COUNTY
C-91-173-05

F.A.I. RTE.	SECTION	COUNTY	TOTAL SHEETS	SHEET NO.
94	*	COOK	36	1
FED. ROAD DIST. NO.	ILLINOIS	FED. AID PROJECT		
D-91-421-01	(2005-014L)	62937		



PROJECT LOCATED IN THE CITY OF CHICAGO



FULL SIZE PLANS HAVE BEEN PREPARED USING STANDARD ENGINEERING SCALES; REDUCED SIZED PLANS WILL NOT CONFORM TO STANDARD SCALES. IN MAKING MEASUREMENTS ON REDUCED PLANS, THE ABOVE SCALES MAY BE USED.

DIGGER:
CHICAGO UTILITY ALERT NETWORK
(312) 744-7000

CTA CONTACT:
MARVIN A. WATSON,
GENERAL MANAGER, CONSTRUCTION
(312) 681-3860

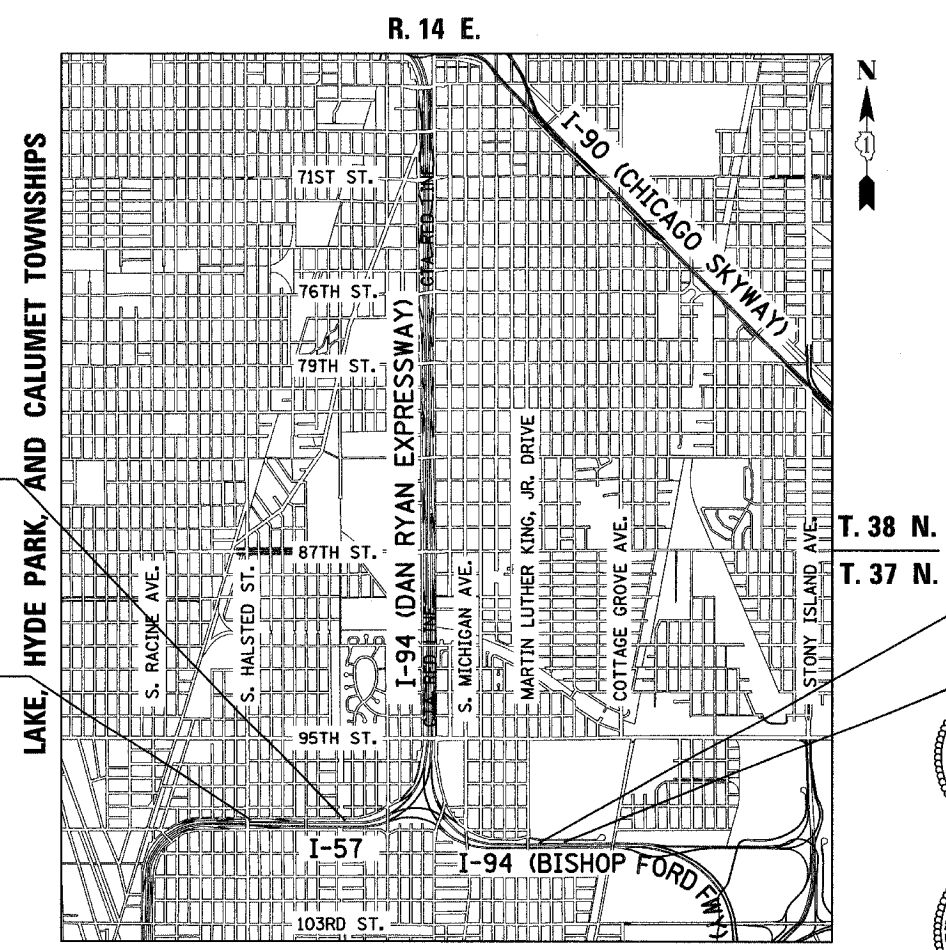
CONTRACT NO. 62937

F.A.I. 57 PROJECT LIMIT
STA. 118+20 (SB I-57)

F.A.I. 57 PROJECT LIMIT
STA. 91+00 (SB I-57)

F.A.I. 94 PROJECT LIMIT
STA. 2002+00

F.A.I. 94 PROJECT LIMIT
STA. 1990+49



LOCATION MAP
GROSS LENGTH OF PROJECT = 3871.0 FT. = 0.73 MI.
NET LENGTH OF PROJECT = 3871.0 FT. = 0.73 MI.

Signed *Dean A. Kiesling*
Dean A. Kiesling, P.E., Ill. Lic. No. 32957
Expires 11-30-2007.
Date 01-13-06

Signed *Thomas Mikolajewski*
Thomas Mikolajewski, P.E., Ill. Lic. No. 062-056151
Expires 11-30-2007.
Date Jan. 13, 2006
For Drawings Sheets 21-32

STATE OF ILLINOIS
DEPARTMENT OF TRANSPORTATION
DIVISION OF HIGHWAYS

SUBMITTED Jan. 18 20 06
Diane M. O'Keefe /cd
DISTRICT ENGINEER

March 24, 20 06
Mike Kire /D
ENGINEER OF DESIGN AND ENVIRONMENT

March 24, 20 06
Milton R. Suss P.E. /D
DIRECTOR, DIVISION OF HIGHWAYS

CONTRACT 2D

TYLIN INTERNATIONAL
PRINTED BY THE AUTHORITY OF THE STATE OF ILLINOIS

DISTRICT ONE DESIGN / PROJECT MANAGER:
BRIAN KUTTAB (847) 705 - 4431