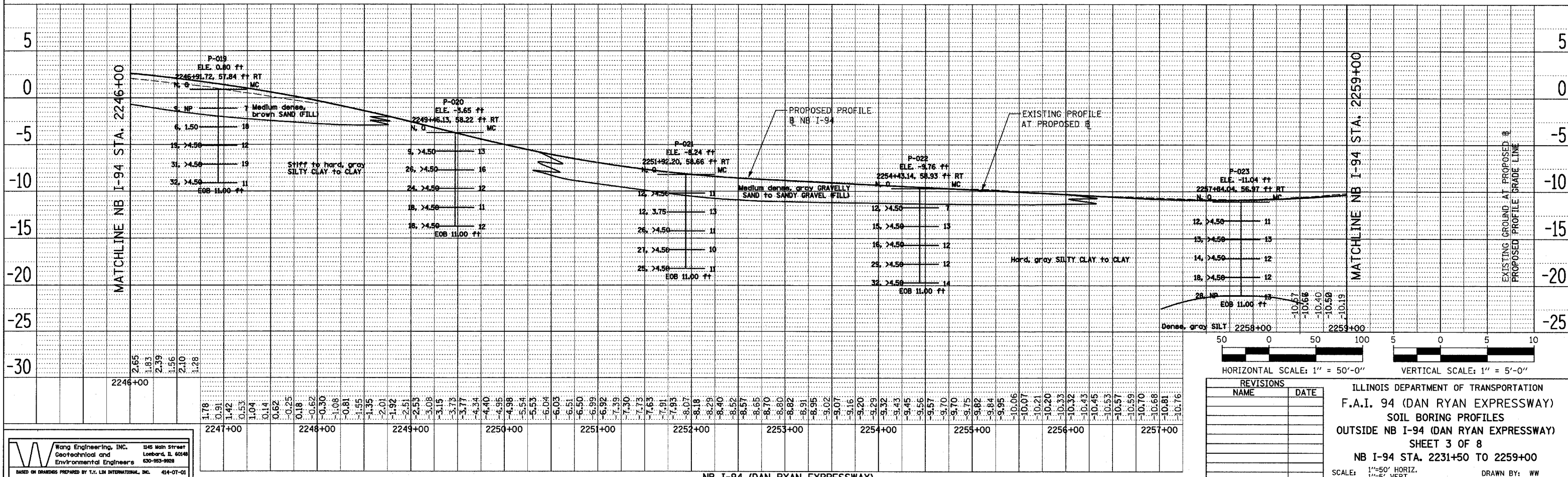
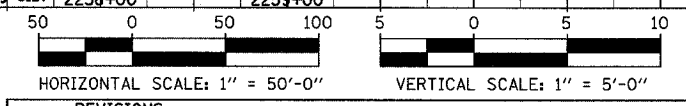


NB I-94 (DAN RYAN EXPRESSWAY)



NB I-94 (DAN RYAN EXPRESSWAY)



REVISIONS	
NAME	DATE

ILLINOIS DEPARTMENT OF TRANSPORTATION  
 F.A.I. 94 (DAN RYAN EXPRESSWAY)  
 SOIL BORING PROFILES  
 OUTSIDE NB I-94 (DAN RYAN EXPRESSWAY)  
 SHEET 3 OF 8  
 NB I-94 STA. 2231+50 TO 2259+00

SCALE: 1"=50' HORIZ.  
 1"=5' VERT.  
 DATE: MARCH 7, 2006

DRAWN BY: WW  
 CHECKED BY: MLS

**Wang Engineering, Inc.**  
 1545 Main Street  
 Lombard, IL 60148  
 630-953-9928

BASED ON DRAWINGS PREPARED BY T.T. LIN INTERNATIONAL, INC. 414-07-01

DATE: \_\_\_\_\_  
 BY: \_\_\_\_\_  
 REVIEWED: \_\_\_\_\_  
 PLOTTED: \_\_\_\_\_  
 PLAN: \_\_\_\_\_  
 NOTE BOOK: \_\_\_\_\_  
 NO. \_\_\_\_\_

DATE: \_\_\_\_\_  
 BY: \_\_\_\_\_  
 REVIEWED: \_\_\_\_\_  
 PLOTTED: \_\_\_\_\_  
 PLAN: \_\_\_\_\_  
 NOTE BOOK: \_\_\_\_\_  
 NO. \_\_\_\_\_