

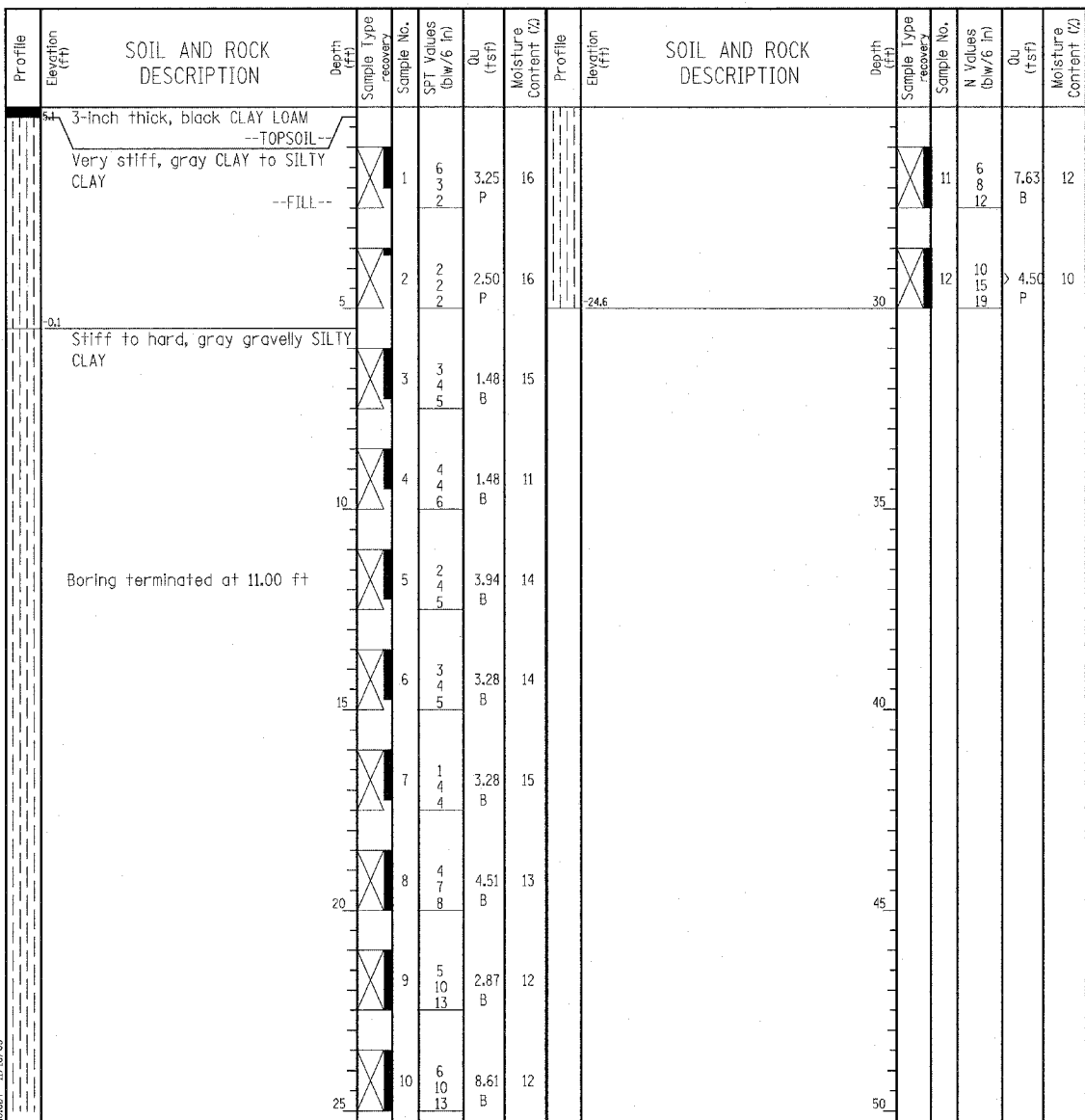
Wang Engineering, INC.
 Consulting Geotechnical and Environmental Engineers
 wangeng3@wangeng.com
 1145 Main Street
 Lombard, IL 60148
 Telephone: 630 953-9928
 Fax: 630 953-9938

BORING LOG 5MMN5

Page 1 of 1

WEI Job No.: 414-07-01
 Datum: CCD
 Elevation: 5.38 ft
 North: 1839569.88 ft
 East: 1177468.46 ft
 Station: 420+54
 Offset: 65' LT

Client: T. Y. LIN International
 Project: Dan Ryan Improvements; IDOT No. D-91-421-01
 Location: From 95th Street to South of 69th Street



| GENERAL NOTES | | | | WATER LEVEL DATA | | | |
|---------------------|--|-------------------|------------|---------------------------|----|-----|--|
| Begin Drilling | 08-03-2004 | Complete Drilling | 08-03-2004 | While Drilling | ∇ | DRY | |
| Drilling Contractor | Patrick Drilling | Drill Rig | CME 75 TMR | At Completion of Drilling | ∇ | DRY | |
| Driller | J&L | Logger | Y. Shiu | Time After Drilling | NA | | |
| Drilling Method | 3.25" ID HSA; Boring backfilled with bentonite upon completion | | | Depth to Water | ∇ | NA | |

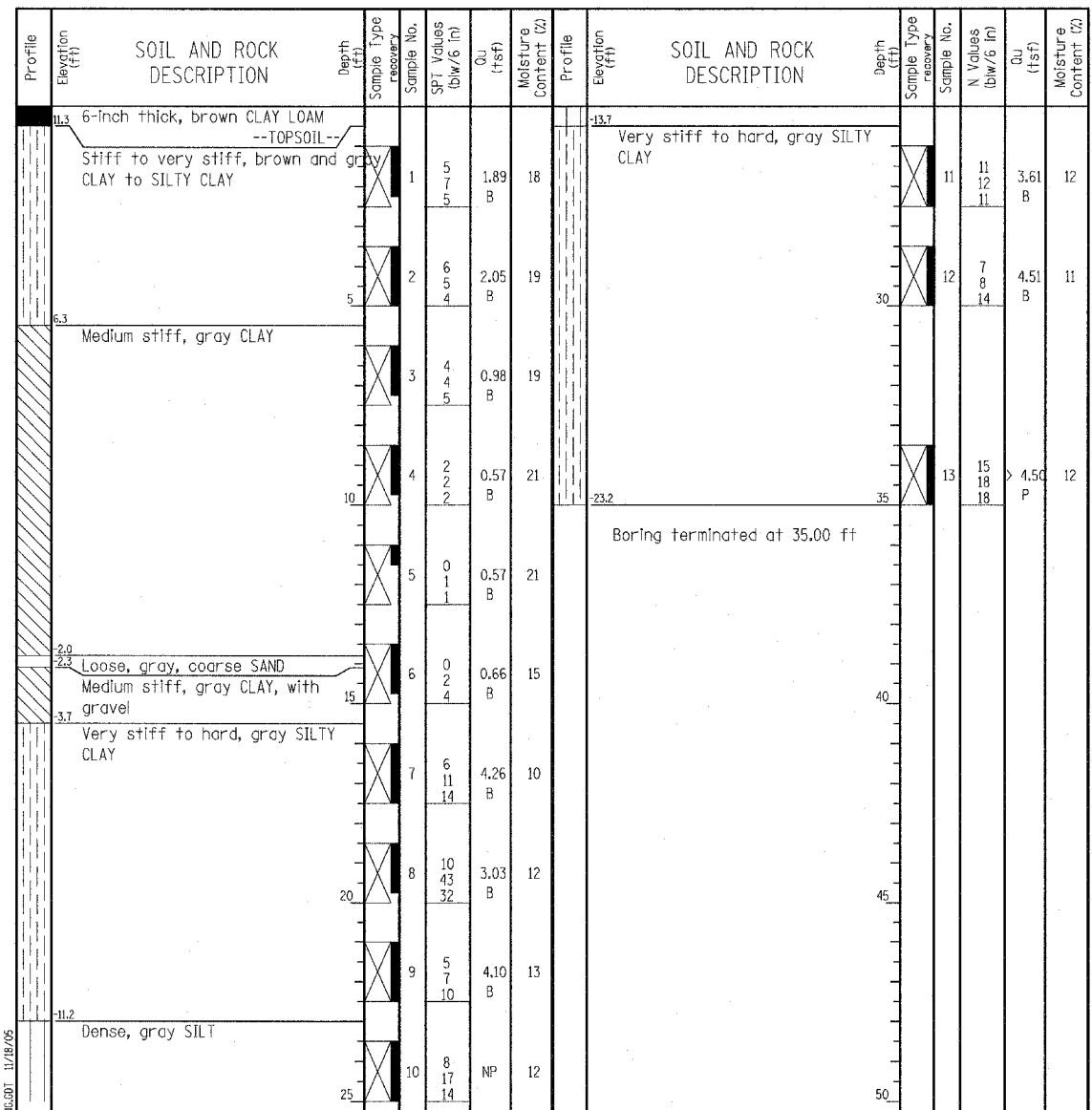
Wang Engineering, INC.
 Consulting Geotechnical and Environmental Engineers
 wangeng3@wangeng.com
 1145 Main Street
 Lombard, IL 60148
 Telephone: 630 953-9928
 Fax: 630 953-9938

BORING LOG 60EF2

Page 1 of 1

WEI Job No.: 414-07-01
 Datum: CCD
 Elevation: 11.85 ft
 North: 1841288.21 ft
 East: 1177934.38 ft
 Station: 2044+97
 Offset: 57' RT

Client: T. Y. LIN International
 Project: Dan Ryan Improvements; IDOT No. D-91-421-01
 Location: From 95th Street to South of 69th Street



| GENERAL NOTES | | | | WATER LEVEL DATA | | | |
|---------------------|--|-------------------|------------|---------------------------|----|-----|--|
| Begin Drilling | 08-13-2004 | Complete Drilling | 08-13-2004 | While Drilling | ∇ | DRY | |
| Drilling Contractor | Patrick Drilling | Drill Rig | CME 75 ATV | At Completion of Drilling | ∇ | DRY | |
| Driller | J&L | Logger | Y. Shiu | Time After Drilling | NA | | |
| Drilling Method | 3.25" ID HSA; Boring backfilled with bentonite upon completion | | | Depth to Water | ∇ | NA | |

LEGEND

NP NON-PLASTIC
 B BULGE FAILURE
 S SHEAR FAILURE
 P POCKET PENETROMETER

TYLIN INTERNATIONAL

| REVISIONS | |
|-----------|------|
| NAME | DATE |
| | |
| | |
| | |
| | |
| | |
| | |
| | |
| | |
| | |

ILLINOIS DEPARTMENT OF TRANSPORTATION
 F.A.I. 94 (DAN RYAN EXPRESSWAY)
 SOIL BORINGS 5MMN5 & 60EF2

SCALE: N.T.S. DRAWN BY: RTM
 DATE: MARCH 7, 2006 CHECKED BY: MPG