

Wang Engineering, INC.
 Consulting Geotechnical and Environmental Engineers
 wangeng3@wangeng.com
 1145 Main Street
 Lombard, IL 60148
 Telephone: 630 953-9928
 Fax: 630 953-9938

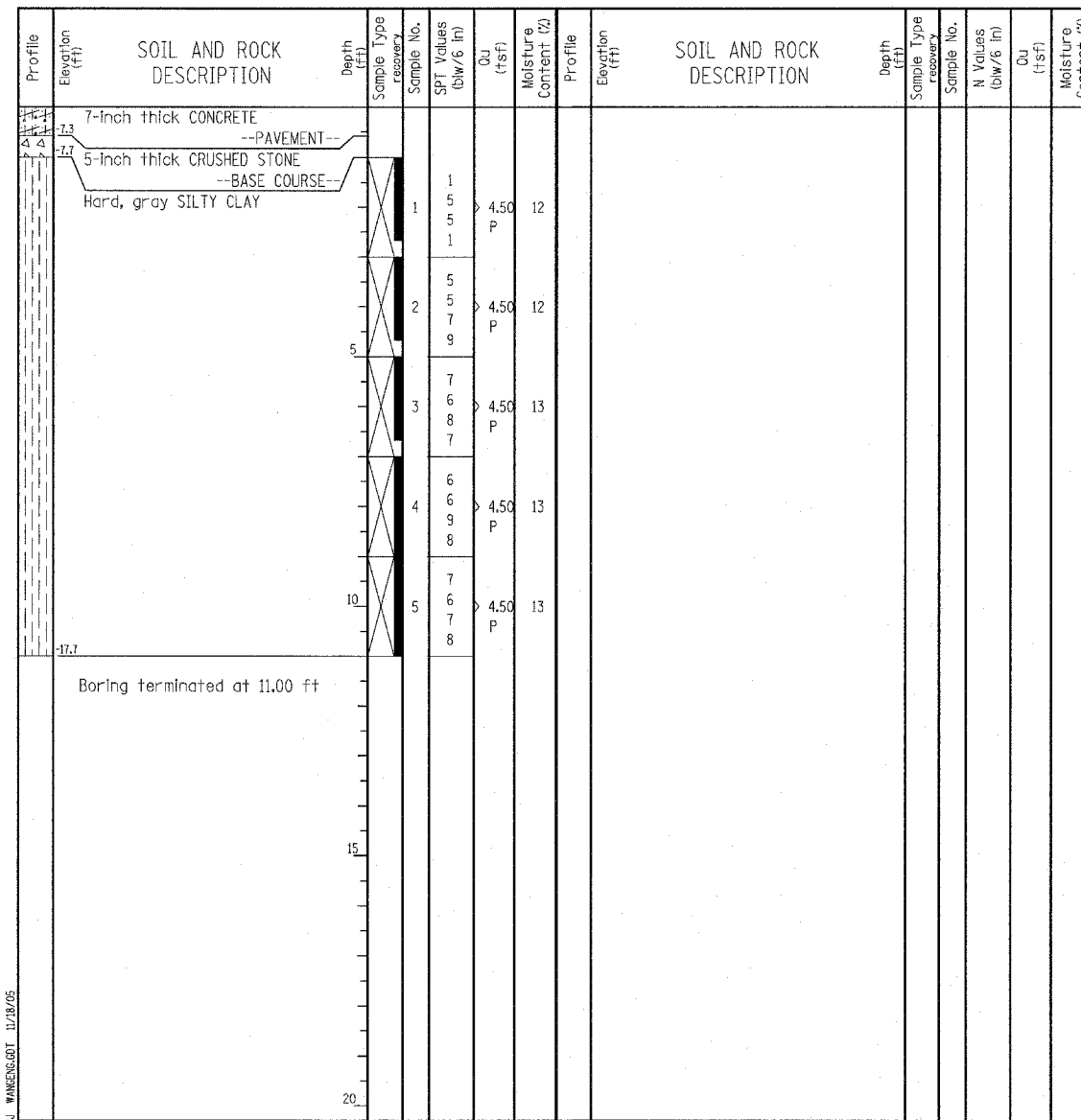
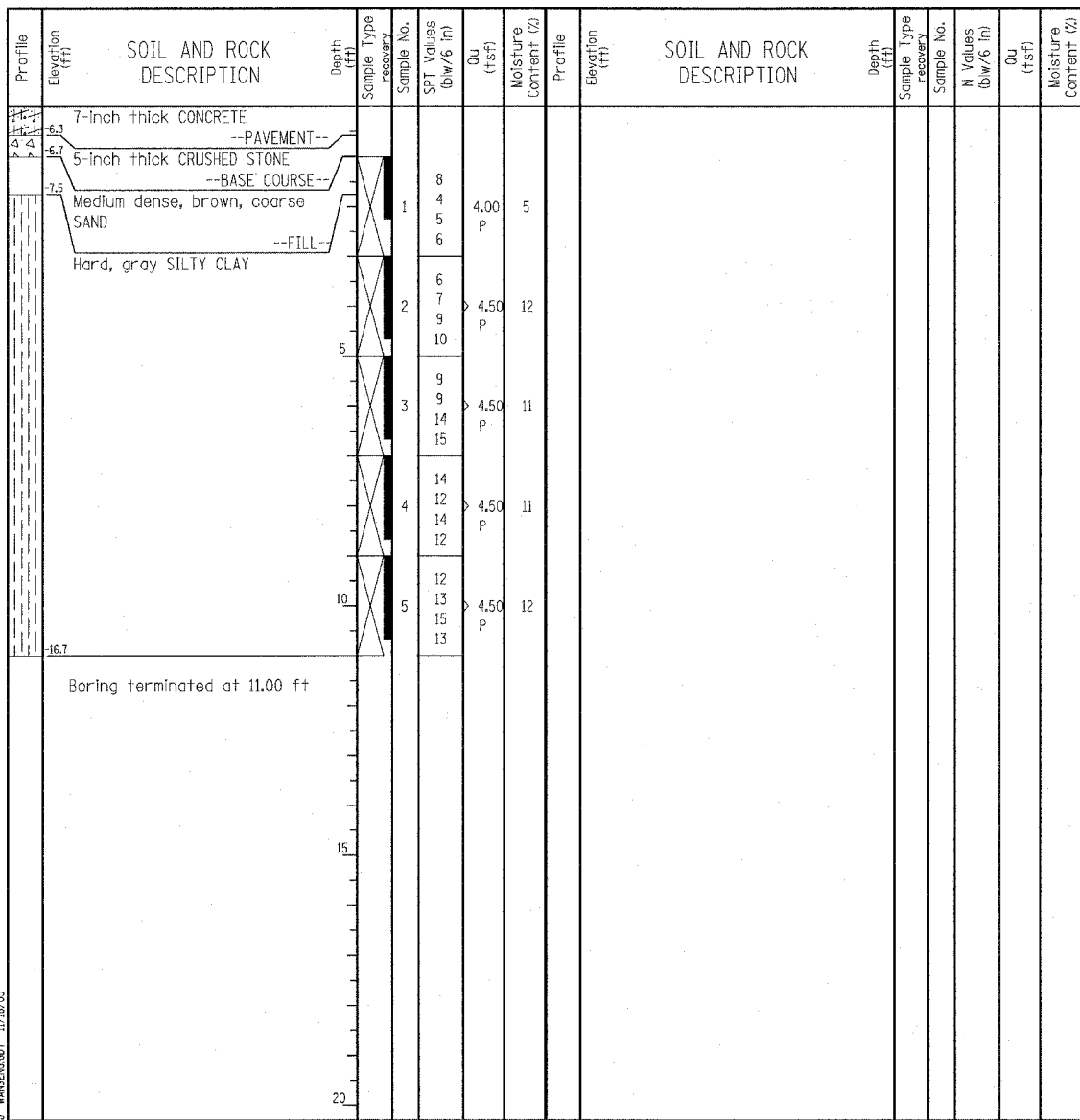
BORING LOG P-015
 WEI Job No.: 414-07-01
 Datum: CCD
 Elevation: -5.74 ft
 North: 1844607.00 ft
 East: 1177807.24 ft
 Station: 2232+39.16
 Offset: 60.56' RT

Client: T. Y. LIN International, Inc.
 Project: Dan Ryan Contracts 62304 (20) and 62593 (23)
 Location: City of Chicago, Cook County, Illinois

Wang Engineering, INC.
 Consulting Geotechnical and Environmental Engineers
 wangeng3@wangeng.com
 1145 Main Street
 Lombard, IL 60148
 Telephone: 630 953-9928
 Fax: 630 953-9938

BORING LOG P-016
 WEI Job No.: 414-07-01
 Datum: CCD
 Elevation: -6.71 ft
 North: 1844913.28 ft
 East: 1177794.12 ft
 Station: 2235+45.70
 Offset: 56.22' RT

Client: T. Y. LIN International, Inc.
 Project: Dan Ryan Contracts 62304 (20) and 62593 (23)
 Location: City of Chicago, Cook County, Illinois



GENERAL NOTES				WATER LEVEL DATA	
Begin Drilling	07-02-2003	Complete Drilling	07-02-2003	While Drilling	DRY
Drilling Contractor	Patrick Drilling	Drill Rig	CME 75 TMR	At Completion of Drilling	DRY
Driller	J&B	Logger	Y. Shiu	Time After Drilling	NA
Drilling Method	3.25" ID HSA; Boring backfilled with bentonite upon completion				

GENERAL NOTES				WATER LEVEL DATA	
Begin Drilling	07-02-2003	Complete Drilling	07-02-2003	While Drilling	DRY
Drilling Contractor	Patrick Drilling	Drill Rig	CME 75 TMR	At Completion of Drilling	DRY
Driller	J&B	Logger	Y. Shiu	Time After Drilling	NA
Drilling Method	3.25" ID HSA; Boring backfilled with bentonite upon completion				

LEGEND

NP NON-PLASTIC
 B BULGE FAILURE
 S SHEAR FAILURE
 P POCKET PENETROMETER

TYLIN INTERNATIONAL

REVISIONS	
NAME	DATE

ILLINOIS DEPARTMENT OF TRANSPORTATION
 F.A.I. 94 (DAN RYAN EXPRESSWAY)
 SOIL BORINGS P-015 & P-016

SCALE: N.T.S. DRAWN BY: RTM
 DATE: MARCH 7, 2006 CHECKED BY: MPG