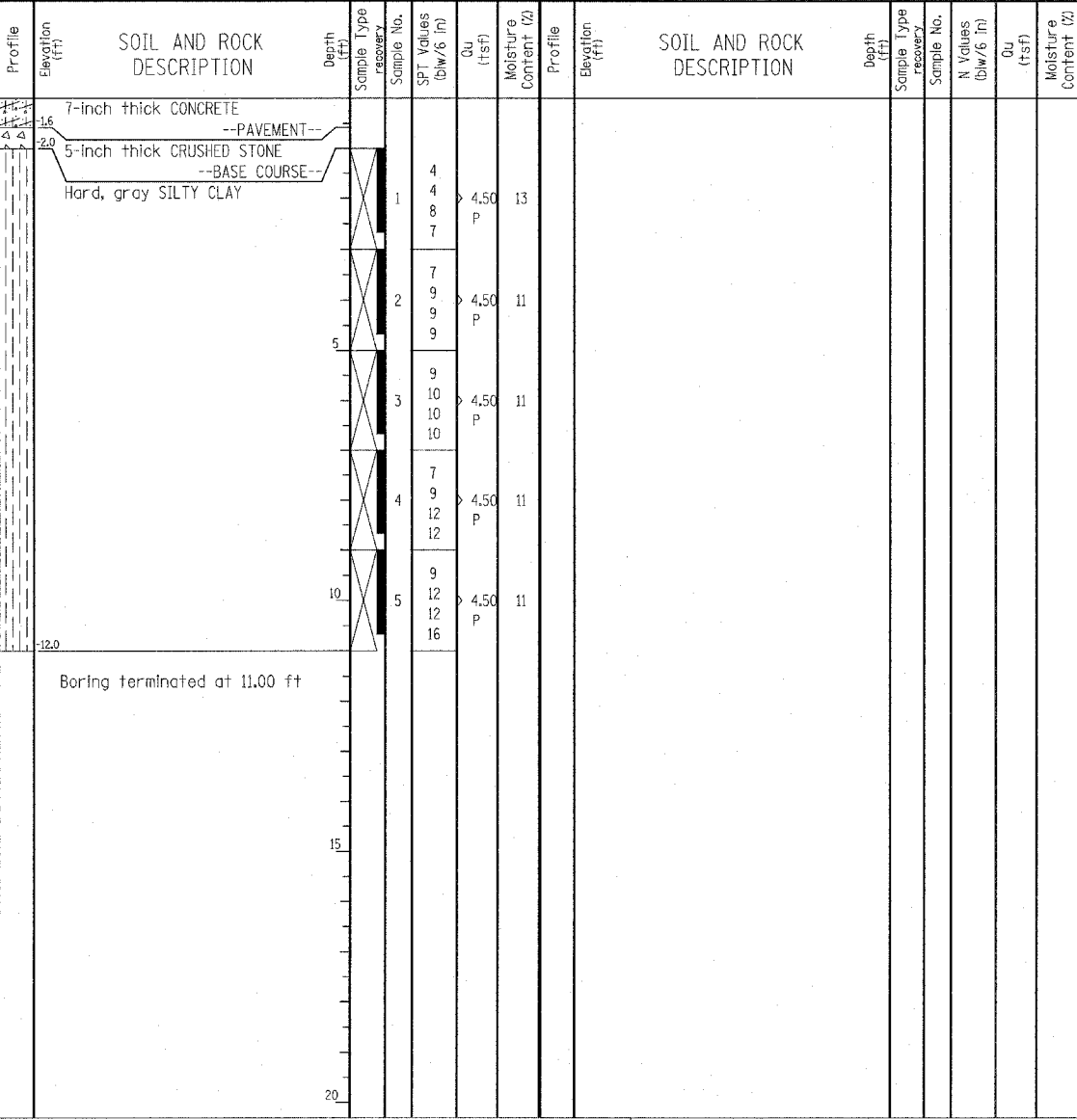


W Wang Engineering, INC.
Consulting Geotechnical and Environmental Engineers
wangeng3@wangeng.com
1145 Main Street
Lombard, IL 60148
Telephone: 630 953-9928
Fax: 630 953-9938

BORING LOG P-013
WEI Job No.: 414-07-01

Datum: CCD
Elevation: -0.97 ft
North: 1844117.84 ft
East: 1177820.71 ft
Station: 2227+49.82
Offset: 60.03' RT

Client: T. Y. LIN International, Inc.
Project: Dan Ryan Contracts 62304 (20) and 62593 (23)
Location: City of Chicago, Cook County, Illinois



GENERAL NOTES				WATER LEVEL DATA			
Begin Drilling	07-02-2003	Complete Drilling	07-02-2003	While Drilling	∇	DRY	
Drilling Contractor	Patrick Drilling	Drill Rig	CME 75 TMR	At Completion of Drilling	∇	DRY	
Driller	J&B	Logger	Y. Shiu	Time After Drilling	NA		
Checked by	MLS	Drilling Method	3.25" ID HSA; Boring backfilled with bentonite upon completion	Depth to Water	∇	NA	

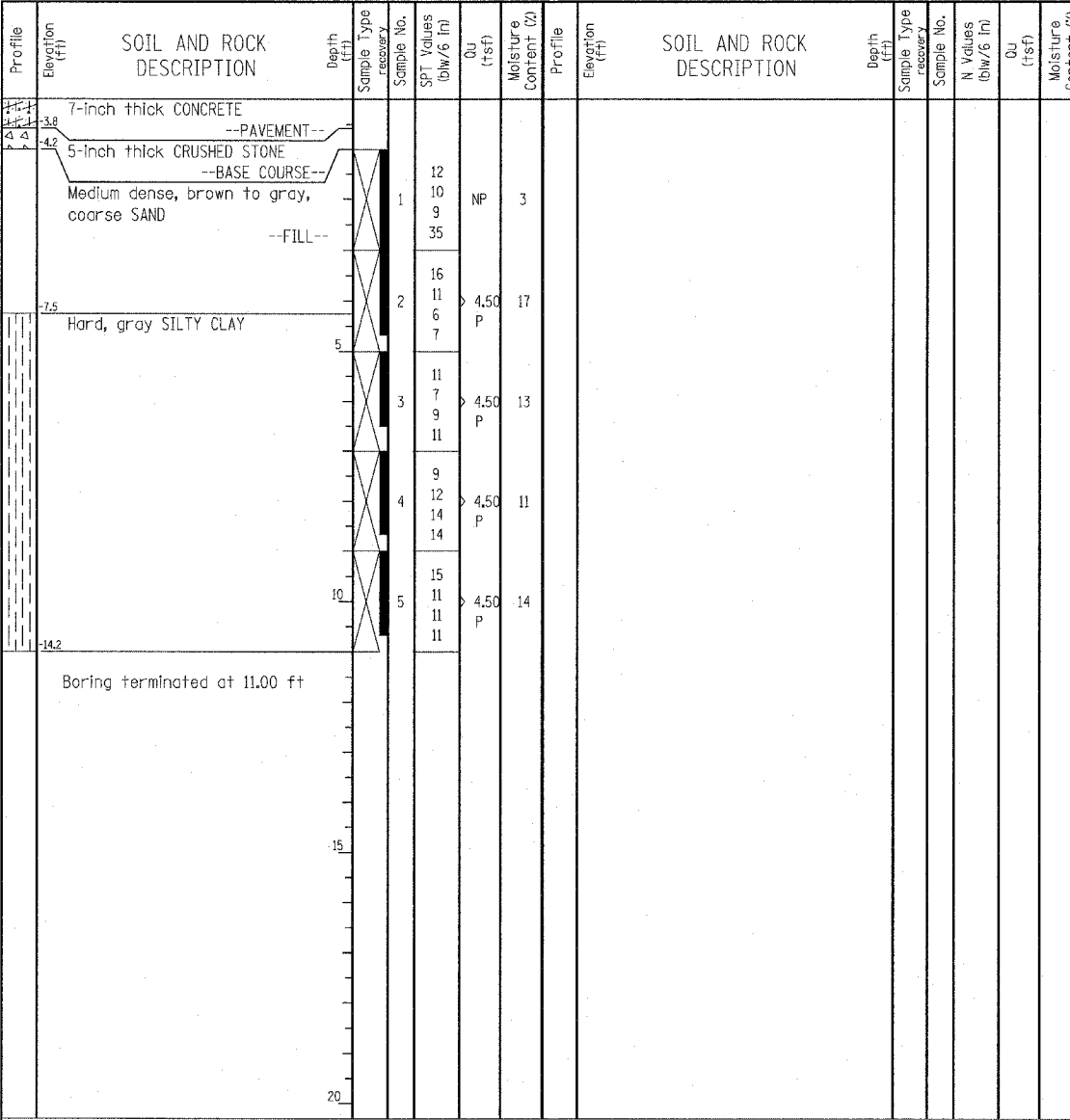
The stratification lines represent the approximate boundary between soil types; the actual transition may be gradual.

W Wang Engineering, INC.
Consulting Geotechnical and Environmental Engineers
wangeng3@wangeng.com
1145 Main Street
Lombard, IL 60148
Telephone: 630 953-9928
Fax: 630 953-9938

BORING LOG P-014
WEI Job No.: 414-07-01

Datum: CCD
Elevation: -3.20 ft
North: 1844370.27 ft
East: 1177810.55 ft
Station: 2230+02.43
Offset: 57.09' RT

Client: T. Y. LIN International, Inc.
Project: Dan Ryan Contracts 62304 (20) and 62593 (23)
Location: City of Chicago, Cook County, Illinois



GENERAL NOTES				WATER LEVEL DATA			
Begin Drilling	07-02-2003	Complete Drilling	07-02-2003	While Drilling	∇	DRY	
Drilling Contractor	Patrick Drilling	Drill Rig	CME 75 TMR	At Completion of Drilling	∇	DRY	
Driller	J&B	Logger	Y. Shiu	Time After Drilling	NA		
Checked by	MLS	Drilling Method	3.25" ID HSA; Boring backfilled with bentonite upon completion	Depth to Water	∇	NA	

The stratification lines represent the approximate boundary between soil types; the actual transition may be gradual.

LEGEND

NP	NON-PLASTIC
B	BULGE FAILURE
S	SHEAR FAILURE
P	POCKET PENETROMETER

TYLIN INTERNATIONAL

REVISIONS	
NAME	DATE

ILLINOIS DEPARTMENT OF TRANSPORTATION
F.A.I. 94 (DAN RYAN EXPRESSWAY)
SOIL BORINGS P-013 & P-014

SCALE: N.T.S. DRAWN BY: RTM
DATE: MARCH 7, 2006 CHECKED BY: MPG