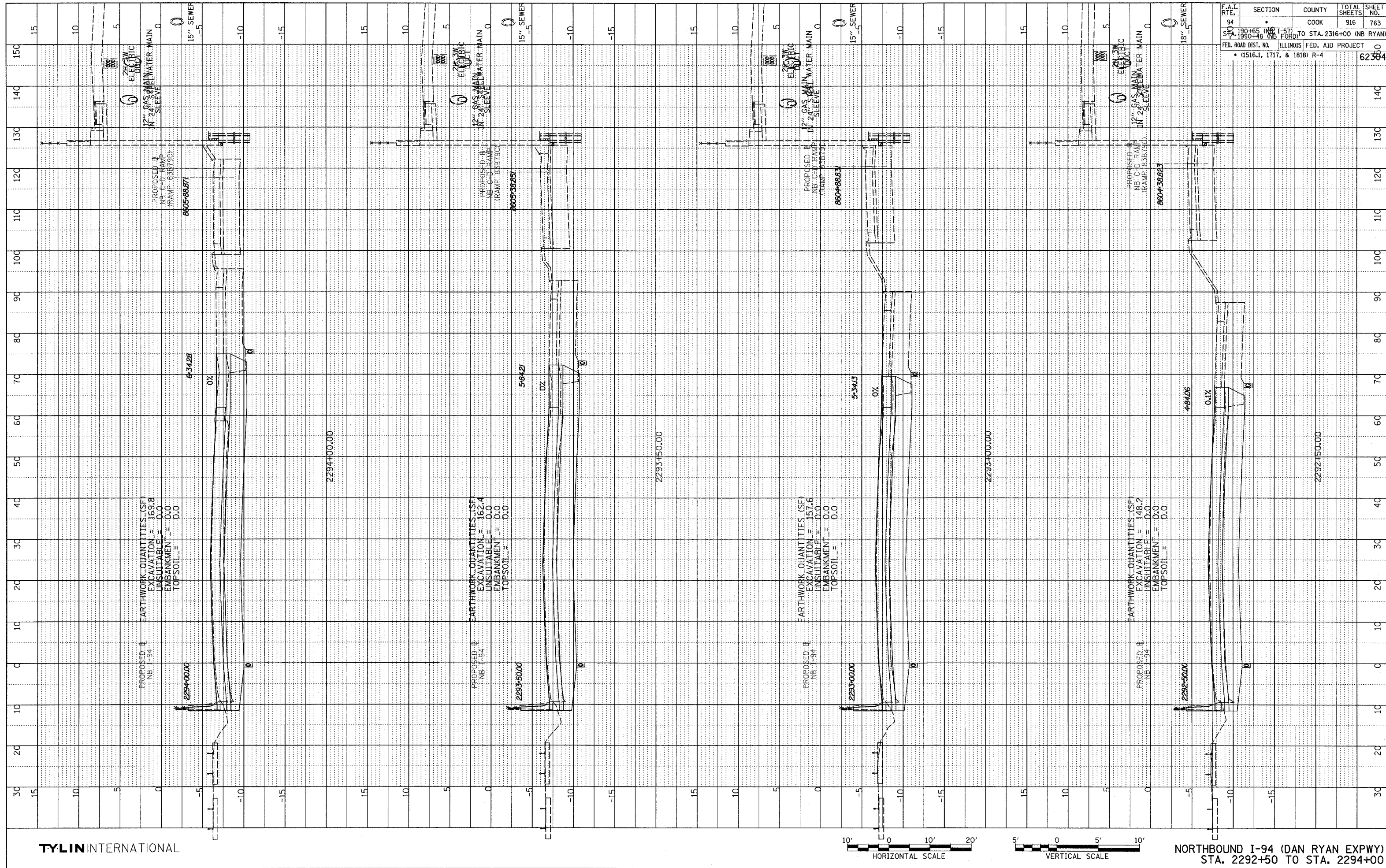
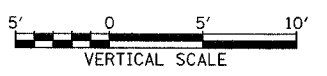


PROFILE SURVEYED BY \_\_\_\_\_ DATE \_\_\_\_\_  
 PLOTTED BY \_\_\_\_\_  
 NOTE BOOK \_\_\_\_\_  
 NO. \_\_\_\_\_  
 STRUCTURE NOTATION CIRCU \_\_\_\_\_



F.A.I. RTE. 94	SECTION 190+65 (NB I-57) STA. 1990+48 (NB I-57)	COUNTY COOK	TOTAL SHEETS 916	SHEET NO. 763
FED. ROAD DIST. NO. ILLINOIS		FED. AID PROJECT		62384
• (1516.1, 1717, & 1818) R-4				

TYLIN INTERNATIONAL



NORTHBOUND I-94 (DAN RYAN EXPWY)  
 STA. 2292+50 TO STA. 2294+00

03/03/2006 04:18:49 PM \\02373v\root\20\proj\20\ss\9379.dgn