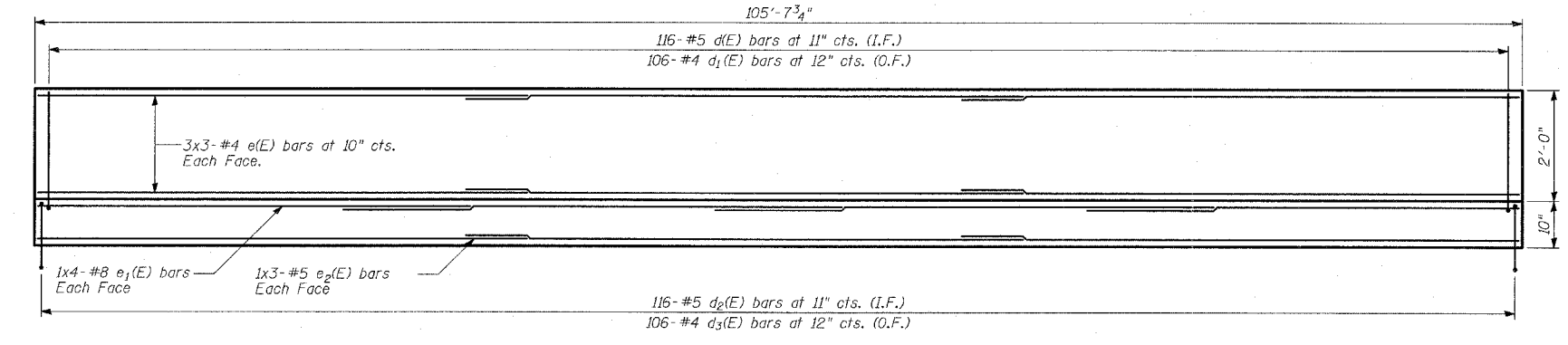
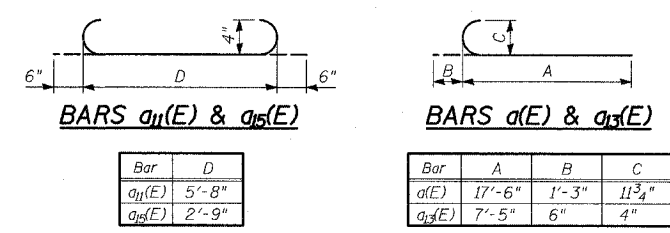
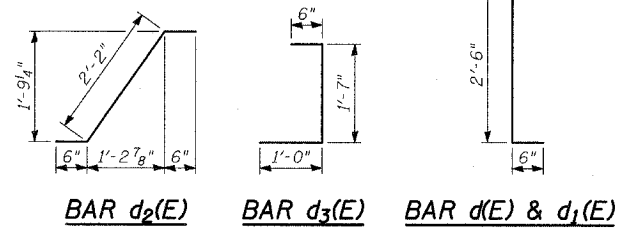
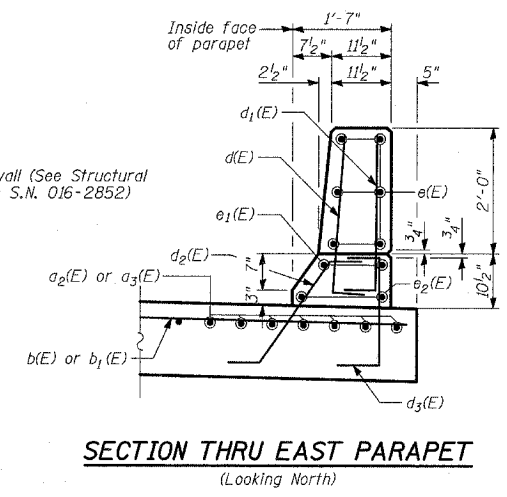
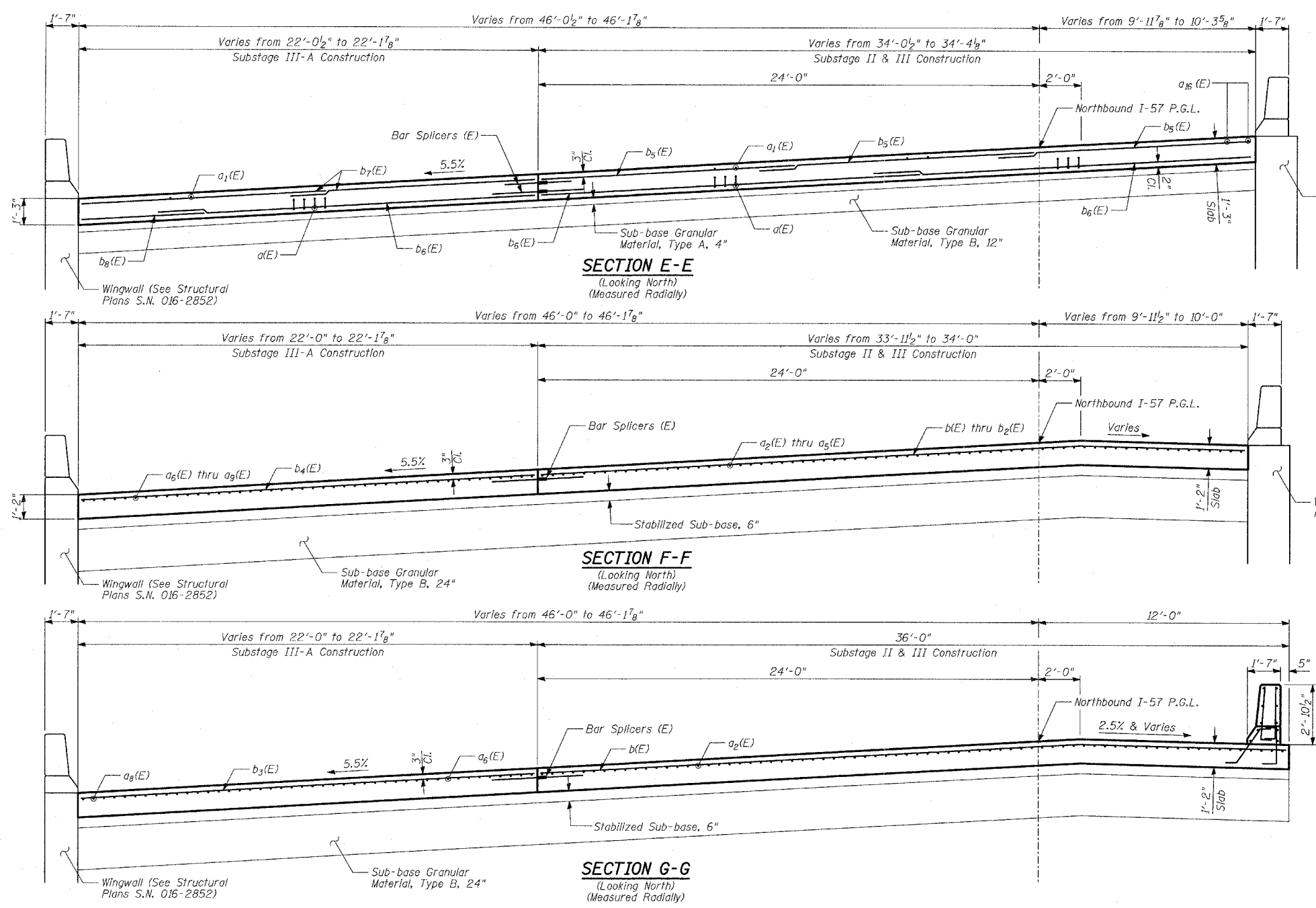


BILL OF MATERIAL

Bar	No.	Size	Length	Shape
a(E)	240	#9	18'-9"	—
a ₁ (E)	60	#5	29'-9"	—
a ₂ (E)	223	#6	29'-4"	—
a ₃ (E)	11	#6	22'-5"	—
a ₄ (E)	13	#6	31'-11"	—
a ₅ (E)	9	#6	31'-11"	—
a ₆ (E)	29	#6	30'-6"	—
a ₇ (E)	14	#6	33'-1"	—
a ₈ (E)	15	#6	17'-2"	—
a ₉ (E)	5	#6	16'-7"	—
a ₁₀ (E)	146	#4	5'-8"	—
a ₁₁ (E)	146	#4	6'-8"	—
a ₁₂ (E)	60	#4	13'-2"	—
a ₁₃ (E)	120	#4	7'-11"	—
a ₁₄ (E)	3	#4	2'-9"	—
a ₁₅ (E)	3	#4	3'-9"	—
a ₁₆ (E)	2	#6	30'-1"	—
b(E)	14	#5	35'-8"	—
b ₁ (E)	6	#5	50'-2"	—
b ₂ (E)	2	#5	14'-4"	—
b ₃ (E)	4	#5	21'-8"	—
b ₄ (E)	5	#5	23'-9"	—
b ₅ (E)	15	#4	25'-3"	—
b ₆ (E)	45	#5	37'-3"	—
b ₇ (E)	10	#4	25'-9"	—
b ₈ (E)	15	#5	13'-11"	—
d(E)	116	#5	3'-0"	—
d ₁ (E)	106	#4	3'-0"	—
d ₂ (E)	116	#5	3'-2"	—
d ₃ (E)	106	#4	3'-1"	—
e(E)	18	#4	36'-3"	—
e ₁ (E)	8	#8	29'-9"	—
e ₂ (E)	6	#5	36'-7"	—
h(E)	72	#5	25'-10"	—
h ₁ (E)	48	#5	25'-11"	—
h ₂ (E)	24	#5	35'-10"	—
h ₃ (E)	12	#5	23'-10"	—
h ₄ (E)	12	#5	21'-8"	—
Reinforcement Bars, Epoxy Coated		POUND	44,070	
Bridge Approach Pavement, Special		SQ YD	194	
Bridge Approach Pavement Connector, Special		SQ YD	465	
Bar Splicers		EACH	82	
Protective Coat		SQ YD	744	

Reinforcement bars designated (E) shall be epoxy coated.



***INSIDE ELEVATION OF EAST PARAPET**

TYLIN INTERNATIONAL

* Parapet dimensions are measured at the inside face of parapet

NOTES:
 1. O.F. - denotes Outside Face
 2. I.F. - denotes Inside Face

REVISIONS	
NAME	DATE

ILLINOIS DEPARTMENT OF TRANSPORTATION
F.A.I. 94 (DAN RYAN EXPRESSWAY)
BRIDGE APPROACH PAVEMENT (SPECIAL)
SOUTH - DETAIL 2

S.N. DESIGNED BY: MAF
 SCALE: NTS DRAWN BY: MAF
 DATE: MARCH 7, 2006 CHECKED BY: MI