

**WORKING POINTS**  
(South Approach Pavement)

Point	Distance along Local Tangent at Sta. 238+07.07	Offset from Local Tangent at Sta. 238+07.07
A	137'-9 <sup>5</sup> / <sub>8</sub> "	7'-1 <sup>1</sup> / <sub>2</sub> " Rt.
B	32'-3"	11'-8 <sup>3</sup> / <sub>8</sub> " Rt.
C	32'-2 <sup>3</sup> / <sub>4</sub> "	9'-8 <sup>3</sup> / <sub>4</sub> " Rt.
D*	14'-10"	9'-10 <sup>7</sup> / <sub>8</sub> " Rt.
E*	14'-9 <sup>7</sup> / <sub>8</sub> "	8'-4" Rt.
F	-17'-5 <sup>1</sup> / <sub>8</sub> "	10'-2 <sup>5</sup> / <sub>8</sub> " Rt.
G	-17'-5 <sup>7</sup> / <sub>8</sub> "	9'-8 <sup>5</sup> / <sub>8</sub> " Rt.
H	86'-4 <sup>5</sup> / <sub>8</sub> "	48'-0 <sup>1</sup> / <sub>4</sub> " Lt.
I*	116'-4 <sup>5</sup> / <sub>8</sub> "	49'-8 <sup>7</sup> / <sub>8</sub> " Lt.
J*	116'-5 <sup>5</sup> / <sub>8</sub> "	48'-2" Lt.
K	133'-8 <sup>3</sup> / <sub>8</sub> "	50'-8 <sup>3</sup> / <sub>4</sub> " Lt.

**WORKING POINTS**  
(North Approach Pavement)

Point	Distance along Local Tangent at Sta. 239+26.89	Offset from Local Tangent at Sta. 239+26.89
L	17'-7 <sup>7</sup> / <sub>8</sub> "	11'-3 <sup>1</sup> / <sub>2</sub> " Rt.
M*	44'-2 <sup>5</sup> / <sub>8</sub> "	10'-3" Rt.
N*	44'-1 <sup>7</sup> / <sub>8</sub> "	8'-8 <sup>1</sup> / <sub>4</sub> " Rt.
O	61'-8 <sup>1</sup> / <sub>8</sub> "	9'-6 <sup>5</sup> / <sub>8</sub> " Rt.
P	59'-10 <sup>5</sup> / <sub>8</sub> "	48'-11 <sup>3</sup> / <sub>8</sub> " Lt.
Q	-21'-2 <sup>1</sup> / <sub>8</sub> "	48'-1 <sup>3</sup> / <sub>8</sub> " Lt.
R	-21'-3 <sup>3</sup> / <sub>4</sub> "	46'-1 <sup>1</sup> / <sub>2</sub> " Lt.
S*	-40'-0 <sup>3</sup> / <sub>8</sub> "	46'-9 <sup>1</sup> / <sub>4</sub> " Lt.
T*	-40'-1"	45'-2 <sup>1</sup> / <sub>2</sub> " Lt.
U	-74'-1 <sup>7</sup> / <sub>8</sub> "	47'-11 <sup>1</sup> / <sub>2</sub> " Lt.
V	-74'-2"	47'-5 <sup>1</sup> / <sub>2</sub> " Lt.

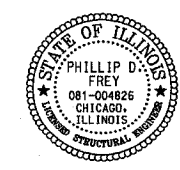
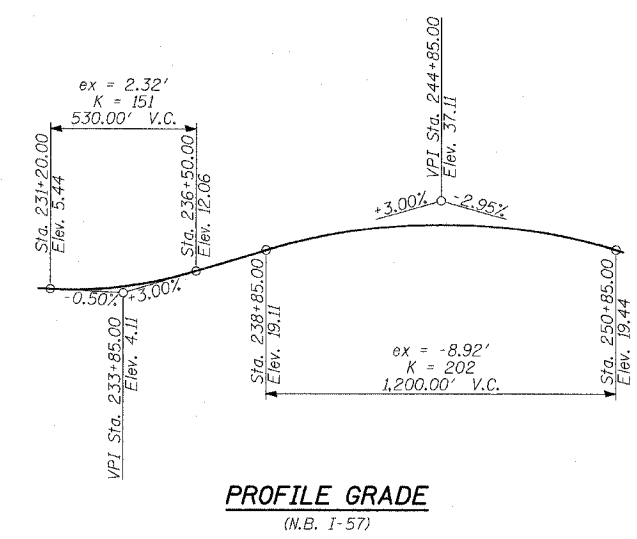
\*  $\varnothing$  of 4" Preformed Joint Seal

**TOTAL BILL OF MATERIAL**

ITEM	UNIT	TOTAL
Bridge Approach Pavement (Special)	SQ YD	391
Protective Coat	SQ YD	1,389
Bar Splicers	EACH	169
Bridge Approach Pavement Connector (PCC), Special	SQ YD	849

**GENERAL NOTES:**

- Construction of Bridge Approach Pavement (Special) and Bridge Approach Pavement Connector (PCC), Special shall conform to Sections 420, 1000 and 1100 of IDOT Standard Specifications for Road and Bridge Construction.
- This work will be paid for at the contract unit price per Square Yards for Bridge Approach Pavement (Special) or per Square Yards for Bridge Approach Pavement Connector (PCC), Special.
- The unit bid price shall include tie bars, preformed joint seal, polyethylene bond breaker, granular sub-base, concrete structures, reinforcement bars (epoxy coated), protective coat, concrete pads (including reinforcement and excavation) and all other items necessary to complete this item of work.



Signed *Phillip D. Frey*  
Phillip D. Frey, P.E., Ill. Lic. No. 081-004826  
Expires 11-30-2006  
Date 3/7/06

REVISIONS	
NAME	DATE

ILLINOIS DEPARTMENT OF TRANSPORTATION  
F.A.I. 94 (DAN RYAN EXPRESSWAY)  
BRIDGE APPROACH PAVEMENT (SPECIAL)  
GENERAL PLAN AND GENERAL NOTES

S.N. \_\_\_\_\_ DESIGNED BY: MAF  
SCALE: \_\_\_\_\_ DRAWN BY: MAF  
DATE: MARCH 7, 2006 CHECKED BY: MI

