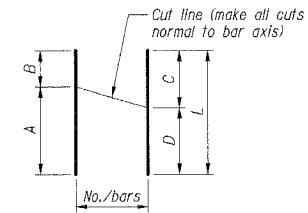


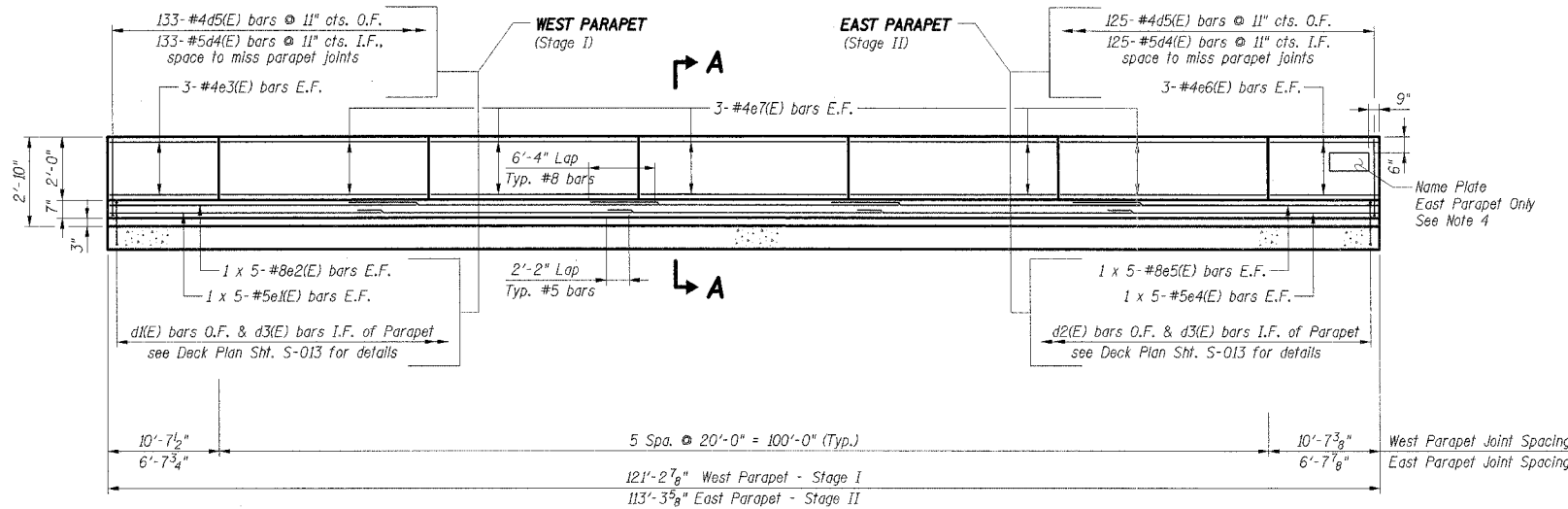
BAR CUTTING DIAGRAM



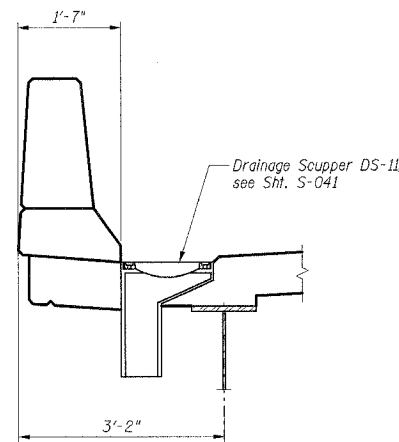
Bar	A	B	C	D	L	No./bars
a9(E)	18'-1"	0'-10"	9'-3 1/2"	9'-7 1/2"	18'-11"	25
a10(E)	18'-1"	1'-1"	9'-5 1/2"	9'-8 1/2"	19'-2"	34
a11(E)	11'-7"	4'-4"	7'-9"	8'-2"	15'-11"	10
a12(E)	6'-2"	2'-0"	3'-11"	4'-3"	8'-2"	6
a13(E)	7'-9"	4'-4"	5'-11"	6'-2"	12'-1"	7
a14(E)	10'-5"	2'-6"	6'-4"	6'-7"	12'-11"	15
a21(E)	15'-0"	5'-11"	10'-4"	10'-7"	20'-11"	17
a22(E)	26'-8"	15'-11"	21'-2"	21'-5"	42'-7"	20
a23(E)	26'-10"	17'-10"	22'-2"	22'-6"	44'-8"	13
a24(E)	14'-2"	4'-2"	9'-0"	9'-4"	18'-4"	15

BAR LIST

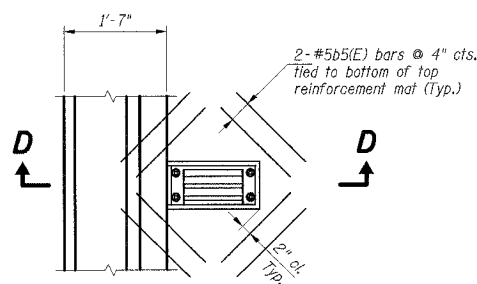
Bar	No.		Size	Length	Shape
	Stage I	Stage II			
a1(E)	144	-	#5	12'-0"	---
a2(E)	54	-	#5	10'-7"	---
a3(E)	46	-	#5	9'-5"	---
a4(E)	46	-	#5	8'-4"	---
a5(E)	211	-	#5	8'-0"	---
a6(E)	81	-	#5	15'-3"	---
a7(E)	62	-	#5	14'-2"	---
a8(E)	63	-	#5	13'-1"	---
a9(E)	25	-	#5	18'-11"	---
a10(E)	34	-	#5	19'-2"	---
a11(E)	10	-	#5	15'-11"	---
a12(E)	6	-	#5	8'-2"	---
a13(E)	7	-	#5	12'-1"	---
a14(E)	15	-	#5	12'-11"	---
a15(E)	9	-	#5	11'-8"	---
a16(E)	-	118	#5	26'-10"	---
a17(E)	-	141	#5	16'-8"	---
a18(E)	-	87	#5	14'-2"	---
a19(E)	-	104	#5	28'-5"	---
a20(E)	-	184	#5	31'-9"	---
a21(E)	-	17	#5	20'-11"	---
a22(E)	-	20	#5	42'-7"	---
a23(E)	-	13	#5	44'-8"	---
a24(E)	-	15	#5	18'-4"	---
a25(E)	127	118	#6	4'-6"	---
a26(E)	-	18	#5	30'-0"	---
a27(E)	-	17	#5	29'-4"	---
a28(E)	-	13	#5	16'-8"	---
a29(E)	16	-	#5	5'-6"	---
a30(E)	12	-	#5	9'-6"	---
a31(E)	-	16	#5	3'-11"	---
b1(E)	114	307	#5	30'-0"	---
b2(E)	42	-	#5	31'-6"	---
b3(E)	18	-	#5	19'-0"	---
b4(E)	26	90	#5	15'-0"	---
b5(E)	8	-	#5	2'-0"	---
b6(E)	-	12	#5	6'-5"	---
d1(E)	133	-	#4	3'-10"	---
d2(E)	-	125	#4	4'-0"	---
d3(E)	133	125	#5	2'-5"	---
d4(E)	133	125	#5	3'-0"	---
d5(E)	133	125	#4	3'-0"	---
e1(E)	10	-	#5	26'-0"	---
e2(E)	10	-	#8	29'-6"	---
e3(E)	12	-	#4	10'-3"	---
e4(E)	-	10	#5	24'-6"	---
e5(E)	-	10	#8	27'-9"	---
e6(E)	-	12	#4	6'-4"	---
e7(E)	30	30	#4	19'-8"	---
x1(E)	32	86	#5	4'-1"	---



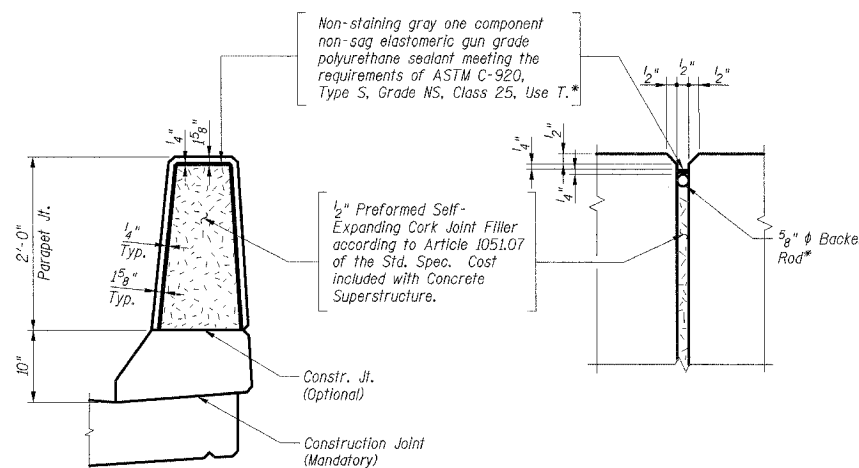
INSIDE ELEVATION OF PARAPETS



SECTION D-D

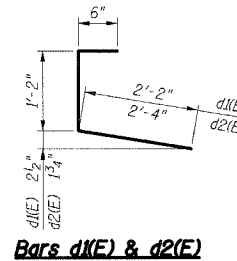


SCUPPER DETAILS DS-II

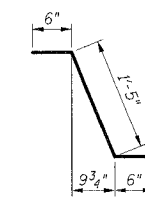


PARAPET JOINT DETAIL

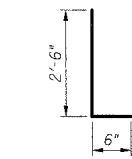
* Cost included with Concrete Superstructure



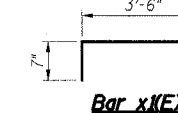
Bars d1(E) & d2(E)



Bar d3(E)



Bars d4(E) & d5(E)



Bar x1(E)

BILL OF MATERIAL

Item	Unit	Total
Concrete Superstructure	Cu yd	219.3
Reinforcement Bars, Epoxy Coated	lb	54,420
Protective Coat	Sq yd	840
Bridge Deck Grooving	Sq yd	716

- Notes:**
- Reinforcement bars designated (E) shall be epoxy coated.
 - Bars indicated thus 3 x 5-#4 etc. indicates 3 lines of bars with 5 lengths per line.
 - I.F. denotes Inside Face, O.F. denotes Outside Face, E.F. denotes Each Face.
 - For Name Plate Details, see Sht. S-002.
 - For Deck Plan, see Sht. S-013.
 - For Section A-A & Typical Parapet Detail, see Sht. S-014.

SHT. S-015

REVISIONS	
NAME	DATE

ILLINOIS DEPARTMENT OF TRANSPORTATION
 F.A.I. ROUTE 57 (INTERSTATE 57)
 I-57 NB OVER WB CONNECTOR
 SN 016-0072 OLD, SN 016-2852 NEW
 STA. 238+73.54
 COOK COUNTY, SECTION (1516.1, 1717, & 1818) R-4
 PARAPET ELEVATIONS
 & BILL OF MATERIAL

DATE: 03/07/06

DRAWN BY: HBJ
 CHECKED BY: RDS

TENG

TENG & ASSOCIATES, INC.
 ENGINEERS/ARCHITECTS/PLANNERS
 205 N. MICHIGAN AVE., CHICAGO, IL 60601
 TELEPHONE: 312.541.5000

\\P001\WORK\PROJECTS\1516.1, 1717, & 1818 R-4\STRUCTURE\PARAPET.DWG
 3-01-2006, 15:58:01