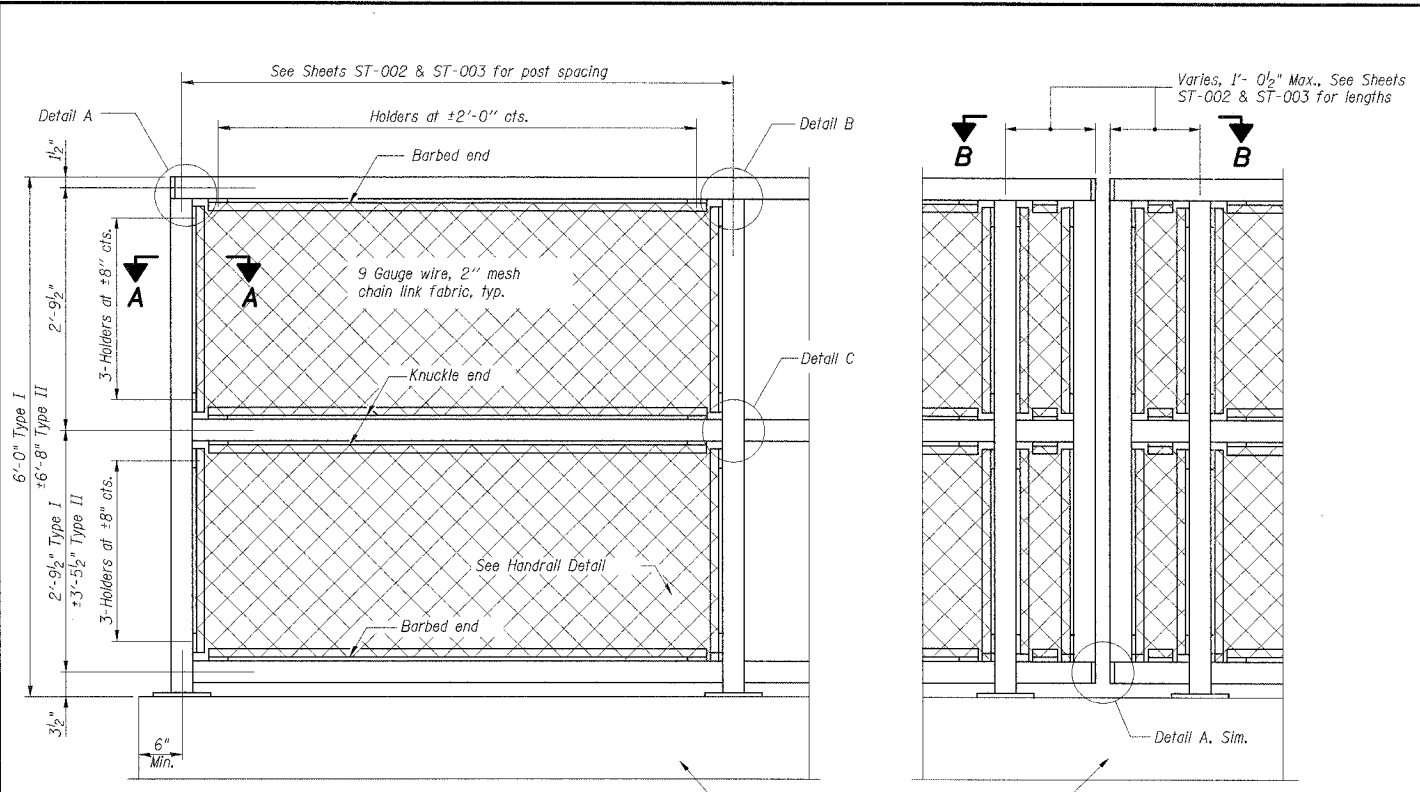


F.A.I. RTE.	SECTION	COUNTY	TOTAL SHEETS	SHEET NO.
57		COOK	916	577
STA. TO STA.		FED. ROAD DIST. NO. 1 ILLINOIS FED. AID PROJECT		
		CONTRACT NO. 62304 *1516.1, 1717, & 1818 R-4		

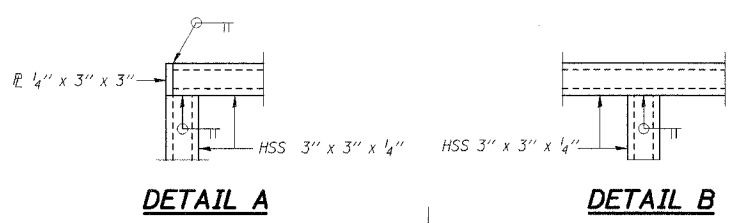
NOTES:

- Railing shall be according to Section 509 of the Standard Specifications, except as noted, and will be paid for at the Contract Unit Price per foot for Pedestrian Railing.
- The 9 gauge fabric ties shall be according to Article 1006.27(d) of the Standard Specifications.
- Installation of the chain link fabric shall be according to Section 664 of the Standard Specifications.
- Hollow structural sections shall conform to the requirements of ASTM designation A500, Grade B, structural steel tubing.
- All other steel shapes and plates shall conform to the requirements of AASHTO M270 Grade 36.
- The chain link fabric shall be placed along Pedestrian Side as shown on Section A-A.
- Stretcher bars shall be used at all four sides of each panel.
- If the option of drilling and epoxy grouting the anchor rods is chosen, The Contractor shall use the capsule or the adhesive cartridge type anchor rods that have been previously tested and given a prior approval by the Department. The Contractor shall install these anchor rods in pre-drilled holes according to the manufacturer's recommendations and procedures. The capsule or the adhesive cartridge shall be sealed with pre-measured amounts of the adhesive chemical.
- All posts, railing, splices, anchor devices, and bent plates shall be galvanized after shop fabrication according to AASHTO M111 and ASTM A385. All bolts, nuts, washers, and anchor rods shall be galvanized according to AASHTO M232 except stainless steel bolts as noted.
- Vent holes for galvanizing shall be placed in the posts and rails at locations that will not allow the accumulation of moisture in the members.
- The chain link fabric shall conform to the requirements of Article 1006.27(a)(1)a of the Standard Specifications.



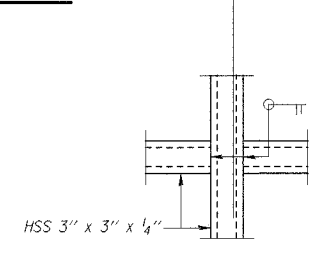
ELEVATION
(Inside Face)

ELEVATION CANTILEVER EXTENSION

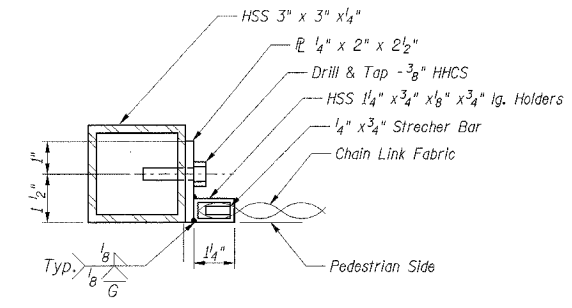


DETAIL A

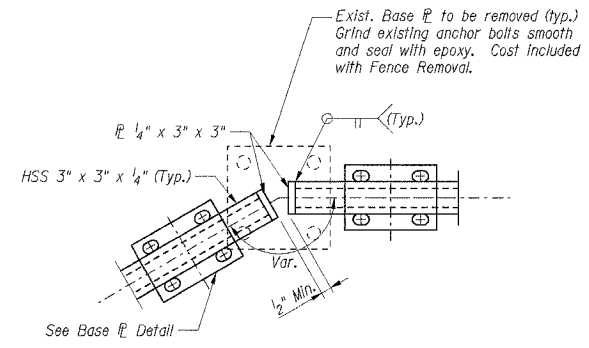
DETAIL B



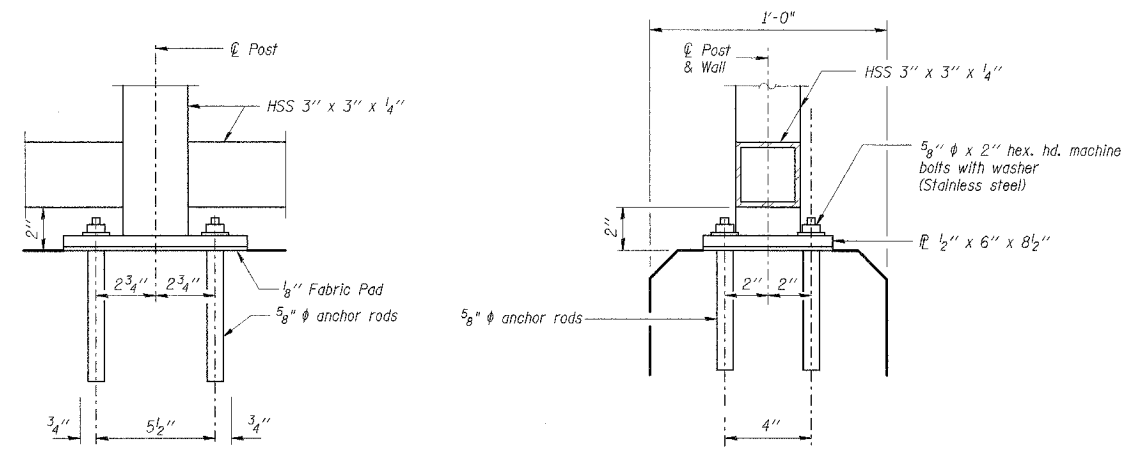
DETAIL C



SECTION A-A

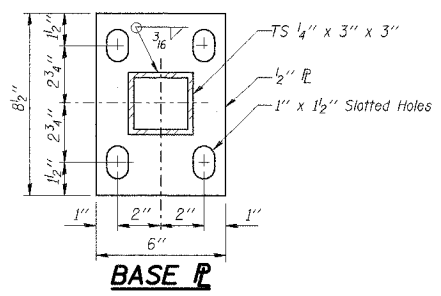


SECTION B-B

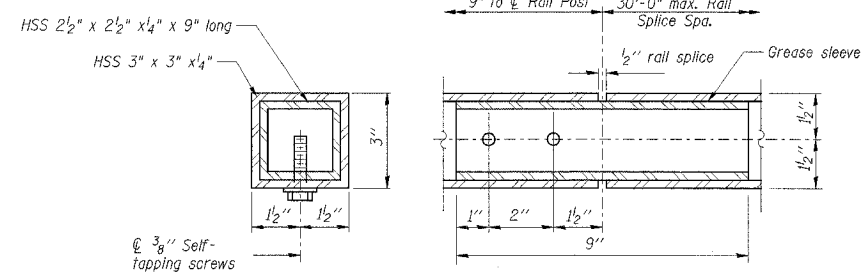


ANCHOR BOLT DETAILS

The Contractor shall drill and epoxy grout 5/8" φ anchor rods. Embedment shall be according to the manufacturer's specifications.



BASE P



RAIL SPLICE

BILL OF MATERIAL		
Item	Unit	Total
Pedestrian Railing	Foot	477
*Fence Removal	Foot	477

*Includes removal of existing fence system and existing base plate assemblies, see Section B-B.

REVISIONS	
NAME	DATE

ILLINOIS DEPARTMENT OF TRANSPORTATION
 F.A.I. ROUTE 57 (INTERSTATE 57) OVER
 F.A.I. ROUTE I-94 SB & CTA TRACKS-BRIDGE REPAIRS
 SN 016-0073
 COOK COUNTY
 SECTION (1516.1, 1717, & 1818) R-4
 PEDESTRIAN RAILING

DATE: 03/07/06
 DRAWN BY: RDS
 CHECKED BY: VP

TENG
 TENG & ASSOCIATES, INC.
 ENGINEERS/ARCHITECTS/PLANNERS
 205 N. MICHIGAN AVE., CHICAGO, IL 60601
 TELEPHONE: 312.461.0000

\FS-000\PROJ\CIV\DOCUMENT\93208601\STRUCT\CON\HRRDOW.CADDEN
 18R08DER.DGN
 3-01-2006 15:43:13

R-28 Special (10'-0" Maximum Post Spacing)