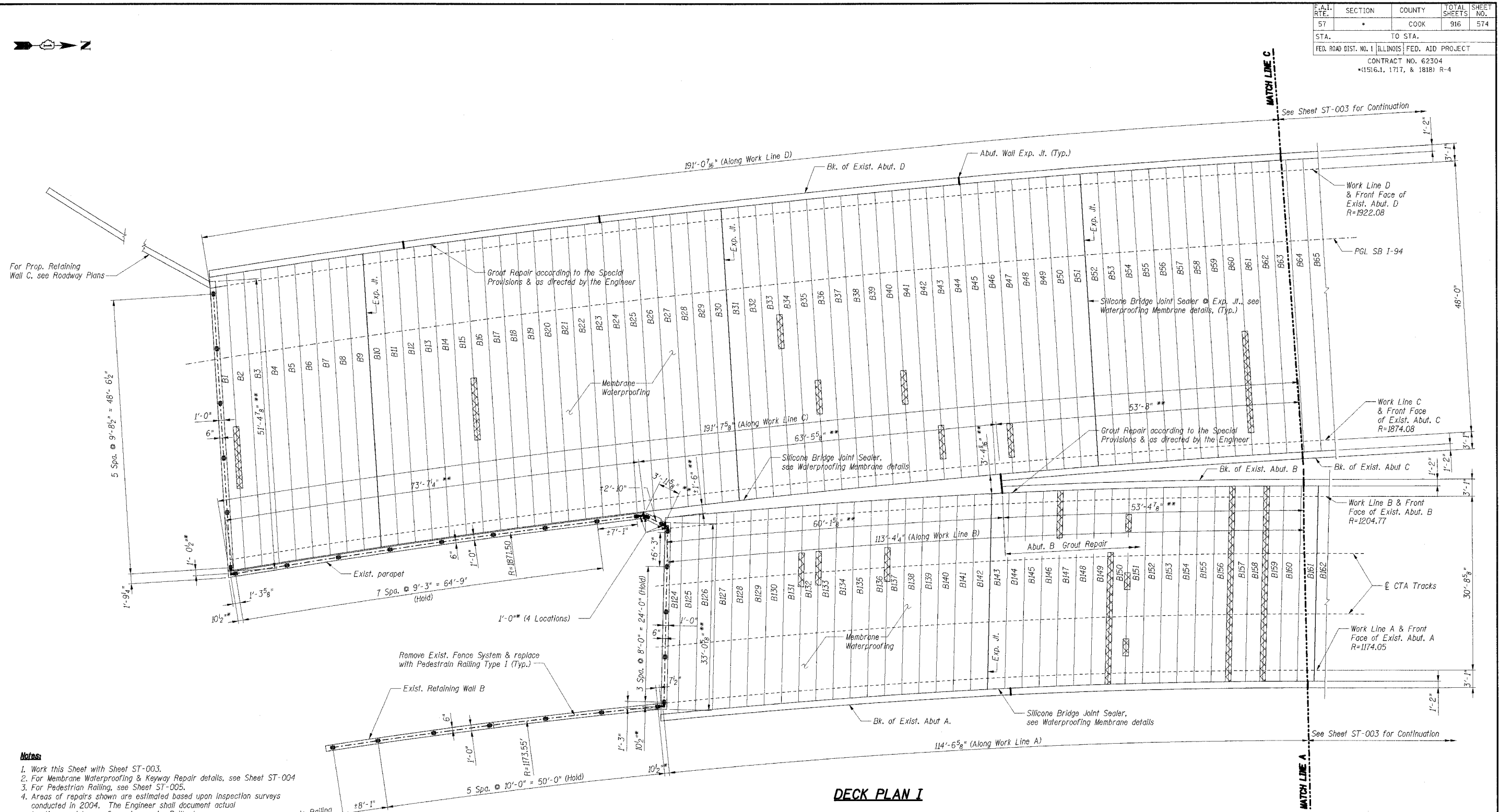


F.A.I. R.F.E.	SECTION	COUNTY	TOTAL SHEETS	SHEET NO.
57	*	COOK	916	574
STA.		TO STA.		
FED. ROAD DIST. NO. 1 ILLINOIS FED. AID PROJECT				
CONTRACT NO. 62304				
*(1516.1, 1717, & 1818) R-4				



Notes:

1. Work this Sheet with Sheet ST-003.
2. For Membrane Waterproofing & Keyway Repair details, see Sheet ST-004
3. For Pedestrian Railing, see Sheet ST-005.
4. Areas of repairs shown are estimated based upon inspection surveys conducted in 2004. The Engineer shall document actual locations and types of repairs on As-Built plans.
5. Date of Survey:
I-94 Tunnel: February 2004
CTA Tunnel: July 2004
6. The Contractor shall coordinate repairs with the Construction Staging shown on the Roadway Plans, according to the Special Provisions, and as directed by the Engineer.
7. The Contractor shall place an application of migratory corrosion inhibitor over the areas of keyway repair prior to installation of the membrane waterproofing system. The migratory corrosion inhibitor coating shall be Sika FerroGard 903 or approved equal. The cost of furnishing and placing the migratory corrosion inhibitor shall not be paid for separately, but shall be considered included in the cost of Keyway Repair.

LEGEND

- Keyway Repair according to the Special Provisions & as directed by the Engineer
- * Pedestrian Railing cantilever extension, see note 3
- ** Dimensions developed from record plan data, for information only

SHT. ST-002

REVISIONS	
NAME	DATE

ILLINOIS DEPARTMENT OF TRANSPORTATION
 F.A.I. ROUTE 57 (INTERSTATE 57) OVER
 F.A.I. ROUTE I-94 SB & CTA TRACKS-BRIDGE REPAIRS
 SN 016-0073
 COOK COUNTY
 SECTION (1516.1, 1717, & 1818) R-4
 DECK PLAN I

DATE: 03/07/06

DRAWN BY: VV
 CHECKED BY: ROS

TENG
 TENG & ASSOCIATES, INC.
 ENGINEERS/ARCHITECTS/PLANNERS
 205 N. MICHIGAN AVE., CHICAGO, IL 60601
 TELEPHONE: 312.467.0000

DECK PLAN I

I:\PROJECTS\2006\1516.1, 1717, & 1818 R-4\DRAWINGS\DECK PLAN I.dwg
 3/7/06 10:53 AM
 V:\PROJECTS\2006\1516.1, 1717, & 1818 R-4\DRAWINGS\DECK PLAN I.dwg
 3/7/06 10:53 AM
 V:\PROJECTS\2006\1516.1, 1717, & 1818 R-4\DRAWINGS\DECK PLAN I.dwg
 3/7/06 10:53 AM