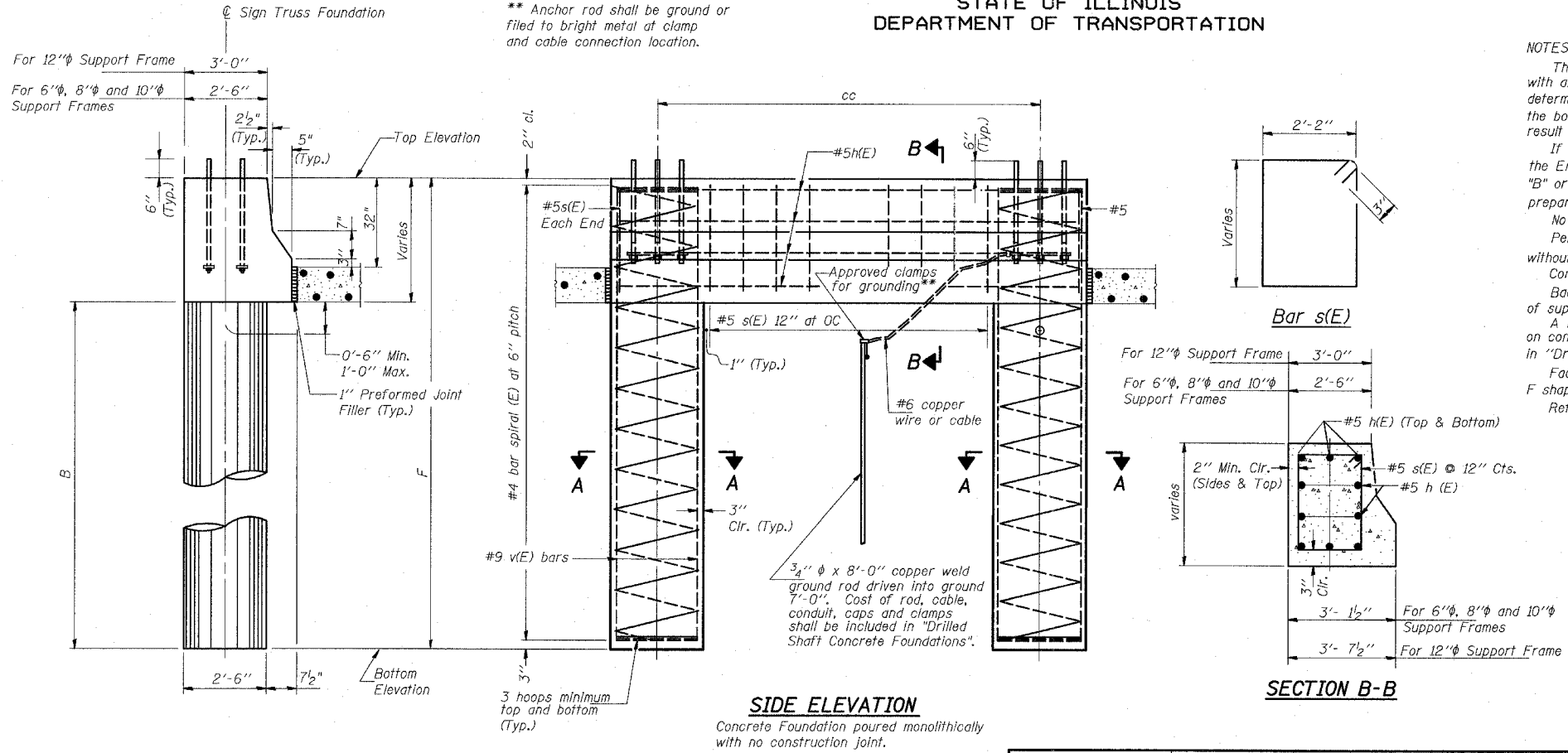


**STATE OF ILLINOIS  
DEPARTMENT OF TRANSPORTATION**



**NOTES:**

The foundation dimensions shown are based on the presence of mostly cohesive soils with an average Unconfined Compressive Strength ( $Q_u$ ) of at least 1.25 tsf, which must be determined by previous soil investigations at the jobsite. When other conditions are indicated, the boring data will be included in the plans and the foundation dimensions shown will be the result of site specific designs.

If the conditions encountered are different than those indicated, the Contractor shall notify the Engineer to determine if the foundation dimensions need to be modified. If dimensions "B" or "F" are revised by more than 12" by the Contractor, "as-built" plans shall be prepared and submitted to the District Bureau of Operations for future reference.

No sonotubes or decomposable forms shall be used below the lower conduit entrance. Permanent metal forms or other shielding may not be left in place below that elevation without the Engineer's written permission.

Concrete shall be placed monolithically, without construction joints.

Backfill shall be placed per Article 502 of Standard Specification and prior to erection of support column.

A normal surface finish followed by a Bridge Seat Sealer application will be required on concrete surfaces above the lowest elevation 6" below finished ground line. Cost included in "Drilled Shaft Concrete Foundation".

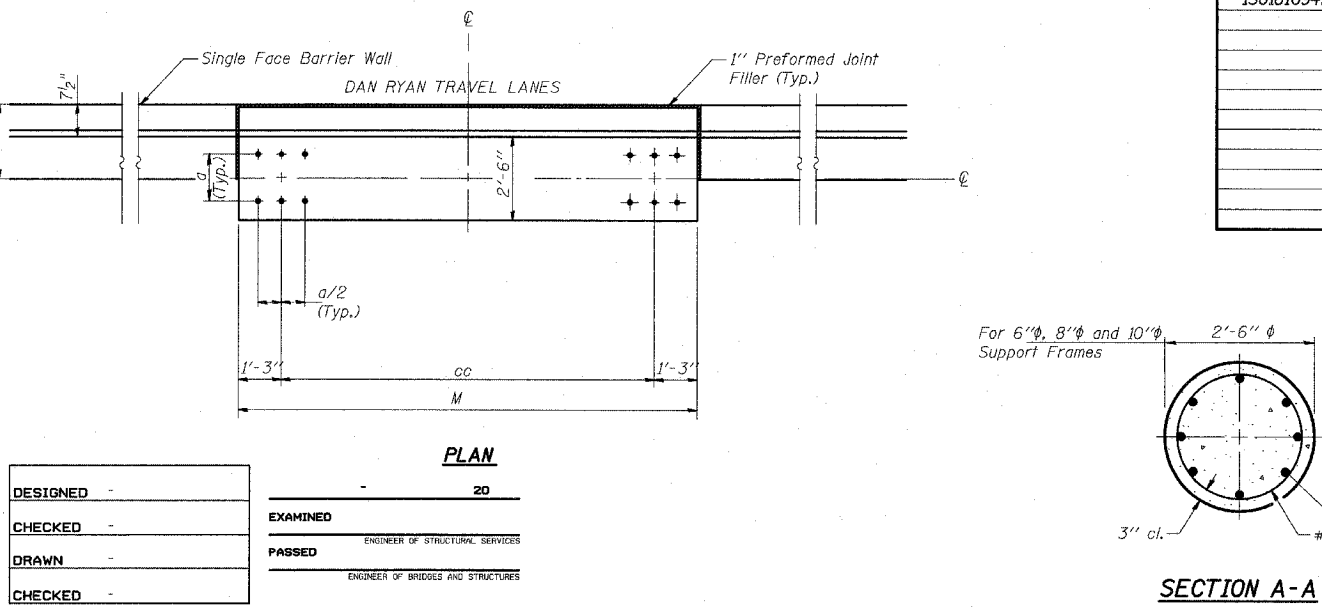
Face of median support foundation shall match dimensions of permanent barrier wall F shape.

Refer to the lighting plans for location and orientation of the conduit.

**FOUNDATIONS:** The contract unit price for "Drilled Shaft Concrete Foundations" shall include: All necessary excavation or drilling (except in rock), disposal of unsuitable or surplus material, formwork, and furnishing and placing the Class SI Concrete, reinforcement bars, conduit, anchor bolts, nuts, washers and ground rods complete in place.

Structure Number	Station	Left Foundation				Right Foundation				Class SI Concrete (Cu. Yds.)
		Elevation Top	Elevation Bottom	B	F	Elevation Top	Elevation Bottom	B	F	
ISO161094L063.8	2006+00	5.83	-14.51	16.5'	20.34'					10.35

MODIFIED BY T.Y. LIN INTERNATIONAL FROM OS4-MED



Pipe Support Frames	cc	M	a	a/2
6"φ	7'-0"	9'-6"	0'-11"	5 1/2"
8"φ	7'-6"	10'-0"	1'-1 1/2"	6 3/4"
10"φ	8'-3"	10'-9"	1'-3"	7 1/2"

DESIGNED	20
CHECKED	EXAMINED
DRAWN	PASSED
CHECKED	

ENGINEER OF STRUCTURAL SERVICES  
ENGINEER OF BRIDGES AND STRUCTURES

**TYLIN INTERNATIONAL**

REVISIONS	
NAME	DATE

ILLINOIS DEPARTMENT OF TRANSPORTATION  
F.A.I. 94 (DAN RYAN EXPRESSWAY)

**OVERHEAD SIGN STRUCTURES  
MEDIAN SUPPORT DETAILS FOR  
32" SINGLE FACE BARRIER WALL**

SCALE: AS NOTED      DRAWN BY: AMB  
DATE: MARCH 7, 2006      CHECKED BY: TB