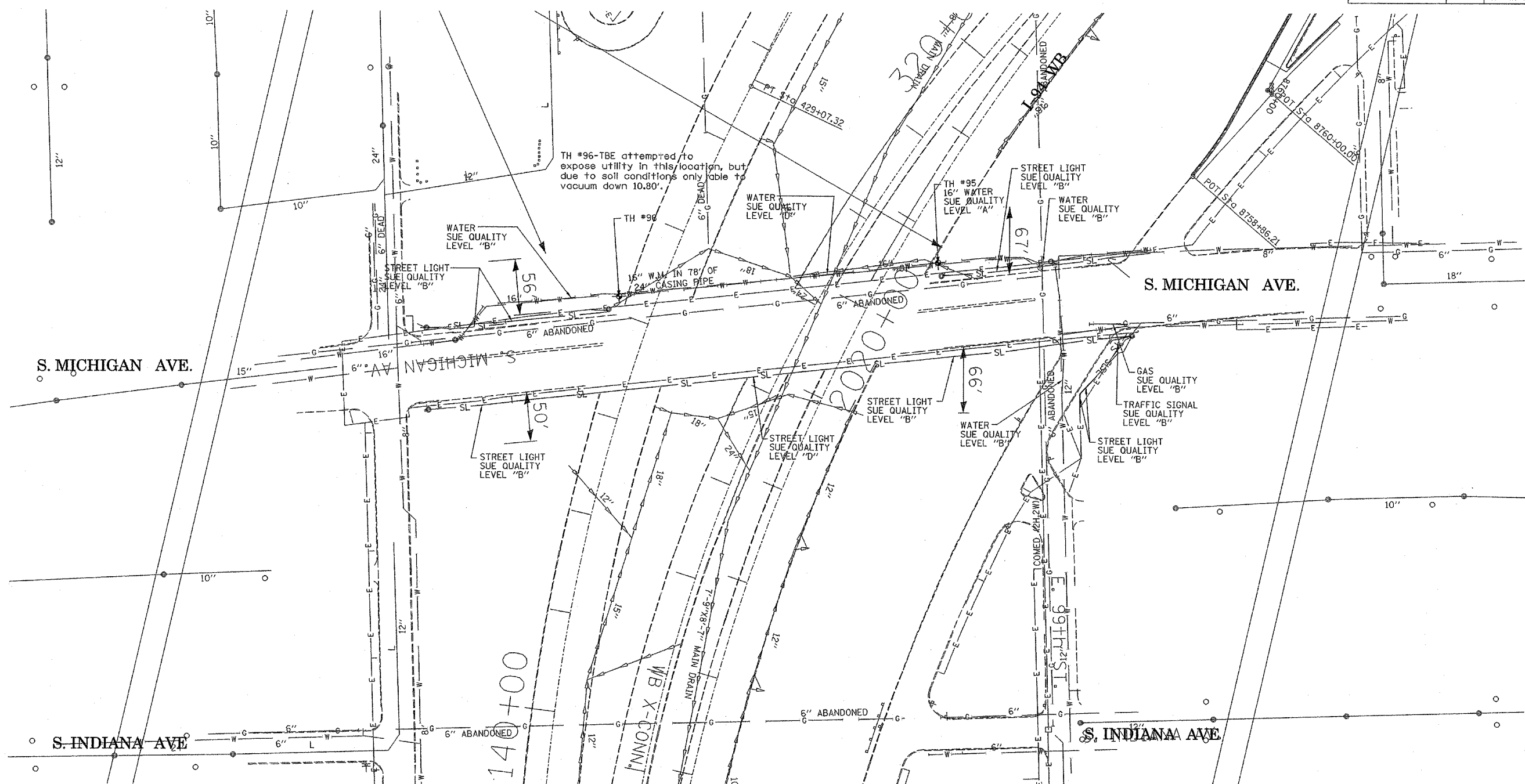


F.A. RTE.	SECTION	COUNTY	TOTAL SHEETS	SHEET NO.
	1816, 1817 & 1818-6	Cook	416	400
STA.	TO STA.			
FED. ROAD DIST. NO.	ILLINOIS FED. AID PROJECT			



TH #96-TBE attempted to expose utility in this location, but due to soil conditions only able to vacuum down 10.80'.

S. MICHIGAN AVE.

S. MICHIGAN AVE.

S. INDIANA AVE

S. INDIANA AVE

**TBE GROUP, INC.**  
 CIVIL ENGINEERING \* TRANSPORTATION \* ENVIRONMENTAL  
 \* PLANNING \* UTILITY ENGINEERING/LOCATING  
 SOUTHERN REGION: FL, GA, SC, NC  
 NORTHERN REGION: IL, IN, MI, OH, MD, NJ, NY  
 PA, VA, CANADA  
 WESTERN REGION: AZ, NV, NM, TX, CA, OR, UT, WA

IL09500164, 167, 168, 170, 171, 179, 180, 182, 204,  
 205, 206, 211, 212, 219, 221, 225, 226, 227, 228, 230, 232  
 TBE SUE PAGE NO: 4 of 36  
 Checked by: *[Signature]*  
 SUE Quality Level "A" : Test Holes  
 SUE Quality Level "B" : Designating

—TS—	—TS—	TRAFFIC SIGNAL
—SL—	—SL—	STREET LIGHT
—COCE—		CITY OF CHICAGO ELECTRIC
—T—	—T—	TELEPHONE
—W—	—W—	WATER
—G—	—G—	GAS
—CTV—	—CTV—	CABLE TELEVISION
—FO—	—FO—	FIBER OPTIC
—E—	—E—	ELECTRIC
⊙		TEST HOLE

Utilities shown on these plans as depicted in the legend have been investigated by TBE Group, Inc in accordance with SUE Industry Standards. All other information shown has been provided to TBE Group, Inc by others.

205 W. WACKER DRIVE  
 SUITE 1020  
 CHICAGO, IL 60606  
 (312) 704-1970

REVISIONS	
NAME	DATE

ILLINOIS DEPARTMENT OF TRANSPORTATION  
 SUE Investigation of Underground Utilities  
 I-94 NB & SB of Dan Ryan Expressway  
 From I-57 to 43rd Street  
 Contract No: 62586, 62589, 62590, 62594, 62693

SOL "A" DATE : 12/10/04      DRAWN BY : KLC  
 SOL "B" DATE : 7/22/04      SCALE : 1" = 50'

TBE could not locate buried utilities directly beneath the expressway due to traffic and safety issues.