

DRAINAGE STRUCTURE SCHEDULE

STRUCTURE NUMBER	STATION	OFFSET	STRUCTURE TYPE		DIA.	FRAME & LID	TOP OF FRAME	N INV.	E INV.	S INV.	W INV.
			MH	CB							
2012	2234+30.12	71.7 RT		A	4'	T20 F&G	-7.56	-13.61			
2013	2234+50.12	70.9 RT		A	4'	T20 F&G	-7.53	-13.61		-13.61	
2014	2234+40.12	71.3 RT		A	4'	T20 F&G	-7.54	-13.64	-13.64	-13.64	-13.64
2015	2234+44.83	75.9 RT	A		6'	T1F CL	-4.99	-16.02		-15.77	-13.66
2016	2235+26.76	10.0 LT		A(7)	4'	T20 F&G	-6.99		-12.82		
2017	2234+79.18	67.8 RT		A	4'	T20 F&G	-7.44			-13.50	
2018	2235+26.76	65.0 RT	A		5'	T1F CL	-7.04	-16.84		-16.59	-13.08
2019	2235+60.19	64.0 RT	A		5'	T1F CL	-6.79			-17.06	-18.06
211	2237+42.86	7.5 LT		A(7)	4'	T20 F&G	-4.38	-7.04	-8.79		
212	2237+52.88	7.5 LT		A	4'	T20 F&G	-4.23		-7.02	-7.02	
213	2238+90.06	9.4 LT		A(7)	4'	T20 F&G	-2.25		-7.50		
214	2240+40.36	10.0 LT		A(7)	4'	T20 F&G	-0.02		-7.15		-7.15
215	2238+59.51	64.7 RT		A(1)	2'	T20 F&G	-4.52	-9.77			
216	2237+43.12	63.5 RT		A(1)	2'	T20 F&G	-4.52				-4.76
217	2239+58.79	80.2 RT		C	2'	T1F OL	-1.50				-6.70
221	2242+11.90	10.0 LT		A(7)	4'	T20 F&G	2.27		-3.87		
222	2243+70.40	10.0 LT		A(7)	4'	T20 F&G	3.17		-3.12		
223	2246+22.22	10.0 LT		A(7)	4'	T20 F&G	2.02			-5.08	
224	2245+98.57	10.0 LT		A(7)	4'	T20 F&G	2.26	-5.17	-5.17		
225	2245+98.22	72.0 RT		A	4'	T20 F&G	1.88	-5.50			-5.50
231	NOT USED	-									
232	2247+41.34	10.0 LT		A(7)	4'	T20 F&G	0.37		-6.73		-6.73
233	2247+41.75	72.0 RT		A	4'	T20 F&G	-0.02		-7.06		-7.06
234	2249+18.81	10.0 LT		A(7)	4'	T20 F&G	-3.40		-10.50		
235	2249+29.68	72.0 RT		A	4'	T20 F&G	-4.06		-10.83		-10.83
236	2250+89.10	8.2 LT		A(7)	4'	T20 F&G	-7.07		-14.17		
237	2250+88.89	72.0 RT		A	4'	T20 F&G	-7.53	-14.49			-14.49
238	2252+48.78	6.5 LT		A(7)	4'	T20 F&G	-8.82		-15.92		-15.92
239	2252+50.12	72.0 RT		A	4'	T20 F&G	-9.36		-16.23		-16.23
2310	NOT USED	-									
2311	2252+00.00	80.5 RT		C	2'	T1F OL	-9.30	-13.40			
241	2253+18.82	6.8 LT		A(7)	4'	T20 F&G	-9.19	-16.34			
242	2254+29.24	5.9 LT		A(7)	4'	T20 F&G	-9.71		-16.81	-16.81	
243	2254+18.95	72.0 RT		A	4'	T20 F&G	-10.21		-17.12		-17.12
244	2255+99.39	5.6 LT		A(7)	4'	T20 F&G	-10.54		-17.64		
245	2255+89.12	72.0 RT		A	4'	T20 F&G	-11.06		-17.95		-17.95
246	NOT USED	-									
247	2257+48.33	5.7 LT		A(7)	4'	T20 F&G	-11.14	-18.21			
248	2257+68.33	5.6 LT		A(7)	4'	T20 F&G	-11.13			-18.21	
249	2257+59.60	5.7 LT		A(7)	4'	T20 F&G	-11.14	-18.24	-18.24	-18.24	-18.24
2410	NOT USED	-									
2411	NOT USED	-									
2412	2257+48.41	68.8 RT		A	4'	T20 F&G	-11.53	-18.50			
2413	2257+68.40	68.0 RT		A	4'	T20 F&G	-11.49			-18.50	
2414	2257+59.60	68.4 RT		A	4'	T20 F&G	-11.51	-18.53	-18.53	-18.53	-18.53
2415	2258+36.87	5.8 LT		A(7)	4'	T20 F&G	-10.95		-17.03		
2416	2258+36.92	65.4 RT		A	4'	T20 F&G	-11.22		-17.31		-17.31
2417	2256+77.08	76.6 RT		C	2'	T1F OL	-11.52		-15.02		
251	NOT USED	-									
252	2260+09.82	8.0 LT		A(7)	4'	T20 F&G	-9.38		-14.82		-14.82
253	2260+09.82	65.9 RT		A	4'	T20 F&G	-9.57		-15.11		-15.11
254	2260+09.82	79.1 RT		A	4'	T1F CL	-4.06	-15.16		-12.46	-15.16
255	2261+49.06	6.5 LT		A(7)	4'	T20 F&G	-7.14		-14.60		
256	2161+58.86	72.0 RT		A	4'	T20 F&G	-7.52		-14.92		-14.92

STORM SEWER SCHEDULE

PIPE NUMBER	UPSTREAM STATION	DOWNSTREAM STATION	TYPE	DIA. (IN)	LENGTH (FT)	SLOPE %	T.B. (CU.YD)
2011	NOT USED	-	-	-	-	-	-
2012	2234+30.12	2234+40.12	2	15	6	0.44	2.0
2013	2234+50.12	2234+40.12	2	15	6	0.44	2.0
2014	2234+40.12	2234+44.83	2	15	5	0.44	1.6
2015	2234+44.83	2235+26.76	2	18	81	0.70	131.5
2016	2235+26.76	2235+26.76	2	12	69	0.44	16.8
2017	2234+79.18	2234+50.12	2	12	26	0.44	7.5
2018	2235+26.76	2235+60.19	2	21	31	0.70	49.5
2019	2235+60.19	2235+62.37	2	24	11	0.50	22.7
211	2237+42.86	2237+37.15	2	21	32	0.44	12.8
212	2237+52.88	2237+42.86	2	12	6	0.44	1.7
213	2238+90.06	2239+06.66	2	15	68	0.44	22.4
214	2240+40.36	2240+40.73	2	15	66	0.44	21.7
215	2240+40.18	2240+40.36	2	15	4	0.44	1.3
216	2237+43.12	2237+52.88	2	12	66	0.44	19.1
217	2239+58.79	2239+64.08	2	12	4	0.44	0
221	2242+11.90	2242+15.44	2	15	75	0.44	24.7
222	2243+70.40	2243+68.09	2	15	71	0.44	23.4
223	2246+22.22	2245+98.57	2	15	20	0.44	6.6
224	2245+98.57	2245+98.22	2	15	74	0.44	24.3
225	2245+98.22	2246+45.19	2	15	43	0.44	14.1
231	2247+40.73	2247+41.34	2	15	4	0.44	1.3
232	2247+41.34	2247+41.75	2	15	74	0.44	24.3
233	2247+41.75	2247+45.72	2	15	6	0.65	2.0
234	2249+18.81	2249+29.68	2	15	75	0.44	24.7
235	2249+29.68	2249+29.78	2	15	3	0.44	1.0
236	2250+89.10	2250+88.89	2	15	73	0.44	24.0
237	2250+88.89	2250+98.90	2	15	8	0.44	2.6
238	2252+48.78	2252+50.12	2	15	71	0.44	23.4
239	2252+50.12	2252+50.05	2	15	6	0.44	1.0
2310	2252+50.03	2252+48.78	2	15	8	0.44	1.3
2311	2252+00.00	2252+20.27	2	12	18	0.44	0
241	2253+18.82	2254+29.24	2	15	107	0.44	35.2
242	2254+29.24	2254+18.95	2	15	71	0.44	23.4
243	2254+18.95	2254+21.96	2	15	5	0.44	1.6
244	2255+99.39	2255+89.12	2	15	71	0.44	23.4
245	2255+89.12	2255+92.16	2	15	5	0.44	1.6
246	2257+61.66	2257+59.60	2	15	8	0.44	2.6
247	2257+48.33	2257+59.60	2	15	8	0.44	2.6
248	2257+68.33	2257+59.60	2	15	5	0.44	1.6
249	2257+59.60	2257+59.60	2	15	66	0.44	21.7
2410	NOT USED	-	-	-	-	-	-
2411	NOT USED	-	-	-	-	-	-
2412	2257+48.41	2257+59.60	2	15	8	0.44	2.6
2413	2257+68.40	2257+59.60	2	15	5	0.44	1.6
2414	2257+59.60	2257+84.02	2	15	27	0.44	3.3
2415	2258+36.87	2258+36.92	2	15	64	0.44	21.1
2416	2258+36.92	2258+16.24	2	15	24	0.44	2.6
2417	2256+77.08	2256+73.35	2	12	3	0.44	0.9
251	2260+09.82	2260+09.82	2	15	6	0.44	1.3
252	2260+09.82	2260+09.82	2	15	66	0.44	21.7
253	2260+09.82	2260+09.82	2	15	12	0.44	1.6
254	2260+09.82	2261+58.91	2	15	143	0.45	0
255	2261+49.06	2161+58.86	2	15	72	0.44	23.7

NOTES:

- INDICATES INLET TYPE A, 2' DIAMETER, TYPE 20 FRAME & GRATE.
- INDICATES MANHOLE, TYPE A, 6' DIAMETER, TYPE 1 FRAME, CLOSED LID, RESTRICTOR PLATE.
- INDICATES SEWER LATERAL WITH 45° CONNECTION. SEE SHEET "DETAIL OF STORM SEWER CONNECTIONS TO SEWER."
- INDICATES SEWER LATERAL WITH 30° CONNECTION. SEE SHEET "DETAIL OF STORM SEWER CONNECTIONS TO SEWER."
- INDICATES SEWER LATERAL WITH 60° CONNECTION. SEE SHEET "DETAIL OF STORM SEWER CONNECTIONS TO SEWER."
- INDICATES MANHOLE TYPE A WITH FLAT SLAB TOP, IDOT STANDARD 602601.
- INDICATES CATCH BASIN REQUIRING TEMPORARY SOIL RETENTION SYSTEM WITH INSTALLATION.
- ALL STRUCTURE ELEVATIONS IN RESURFACED AREAS COME FROM AERIAL SURVEY AND SHOULD BE VERIFIED IN THE FIELD AND ADJUSTED TO MATCH EXISTING CONDITIONS.

CASING SIZES

PIPE SIZE	CASING SIZE (OD)*	CASING WALL THICKNESS
12"	30"	0.500"
24"	42"	0.625"
30"	48"	0.688"
36"	48"	0.688"

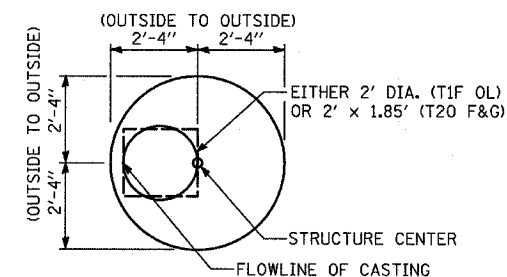
*ALL STEEL CASING SHALL MEET OR EXCEED ASTM A-139, GRADE B.

SEE THE DRAINAGE & UTILITY PLANS FOR LOCATION OF ALL STRUCTURES.

CATCH BASIN STATIONS ARE MEASURED TO CENTER OF STRUCTURE.

CATCH BASIN OFFSETS ARE MEASURED TO FLOWLINE OF CASTING. (SEE BELOW)

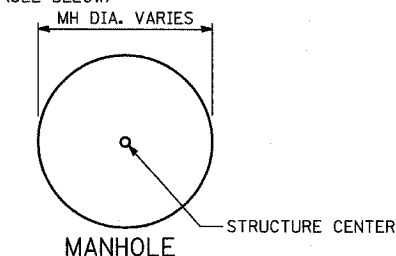
FLOWLINE OF CASTING IS LOCATED AT 1/2 OF STRUCTURE FOR CATCH BASINS LOCATED IN SWALE AND GORE AREAS.



CATCH BASIN

(PRECAST REINFORCED CONCRETE SECTION)

MANHOLE STATIONS AND OFFSETS ARE MEASURED TO CENTER OF STRUCTURE. (SEE BELOW)



MANHOLE

SHEET 5 OF 10

REVISIONS	
NAME	DATE

ILLINOIS DEPARTMENT OF TRANSPORTATION
F.A.I. 94 (DAN RYAN EXPRESSWAY)

DRAINAGE STRUCTURE SCHEDULE

SCALE: NONE
DATE: MARCH 7, 2006
DRAWN BY: RD
CHECKED BY: DA