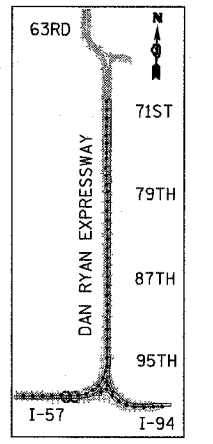
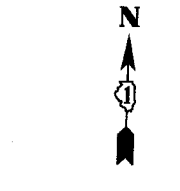
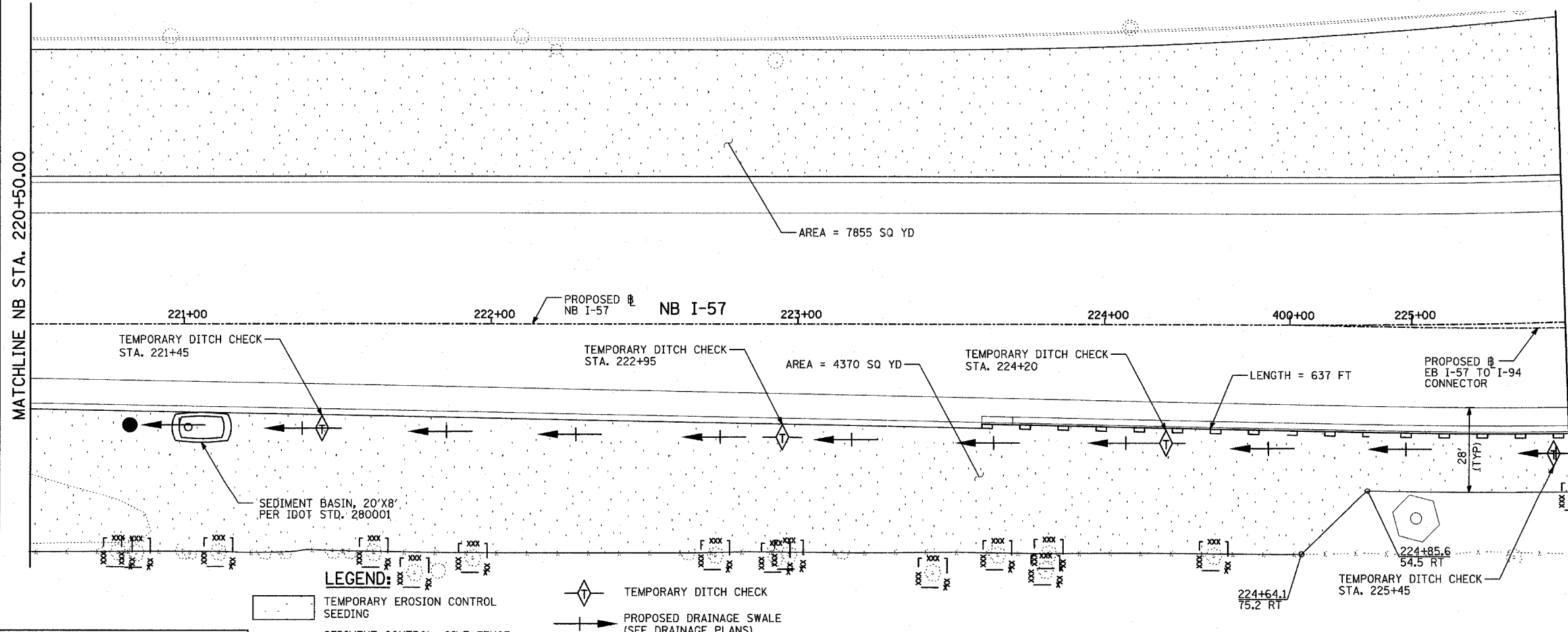
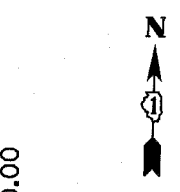
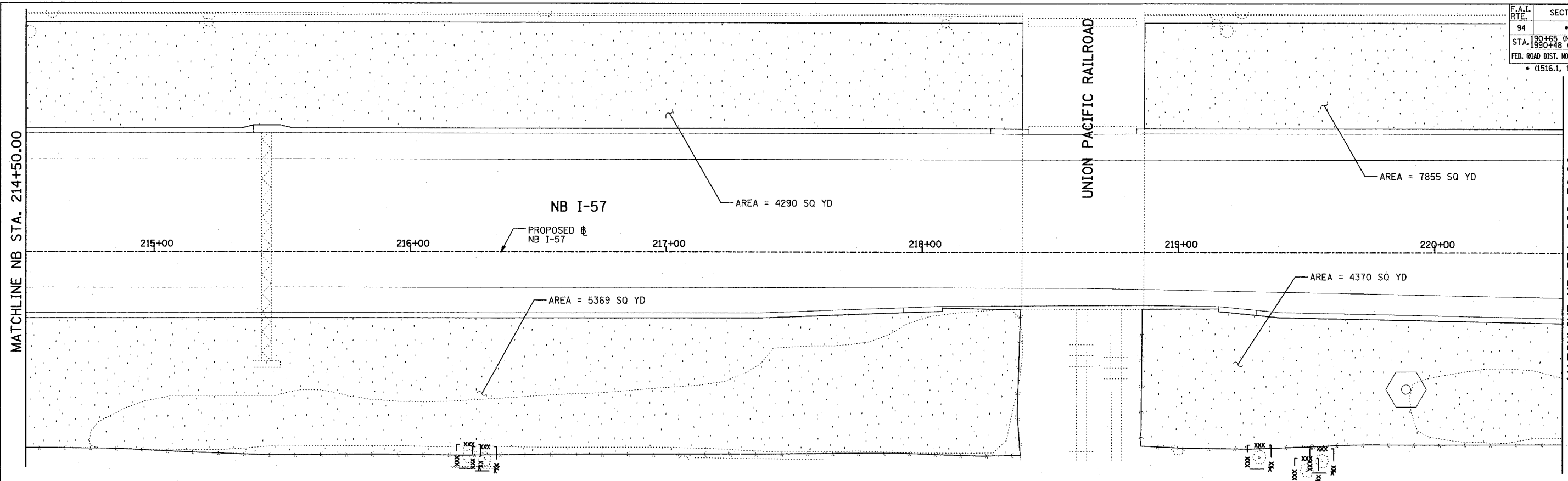
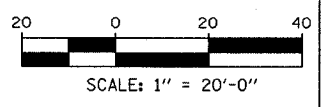


F.A.I. RTE.	SECTION	COUNTY	TOTAL SHEETS	SHEET NO.
94		COOK	916	285
STA. 190+65 (NB I-57) TO STA. 2316+00 (NB RYAN)				
FED. ROAD DIST. NO.	ILLINOIS	FED. AID PROJECT		
• (1516.1, 1717, & 1818) R-4			62304	



LOCATION MAP



LEGEND:

	TEMPORARY EROSION CONTROL SEEDING		TEMPORARY DITCH CHECK
	SEDIMENT CONTROL, SILT FENCE		PROPOSED DRAINAGE SWALE (SEE DRAINAGE PLANS)
	INLET FILTER, TO BE INSTALLED IN OFF PROJECT DRAINAGE STRUCTURES ACCEPTING STORMWATER RUNOFF		EXISTING DRAINAGE SWALE
	TEMPORARY FENCE		TEMPORARY FENCE FOR TREE PROTECTION (15 FEET PER SIDE = 60 FEET TOTAL)

TOTAL NUMBER OF INLET FILTERS THIS SHEET: 0
 TOTAL NUMBER OF TEMPORARY DITCH CHECKS THIS SHEET: 4
 TOTAL NUMBER OF TREES TO BE PROTECTED THIS SHEET: 19

REVISIONS	
NAME	DATE

ILLINOIS DEPARTMENT OF TRANSPORTATION
 F.A.I. 94 (DAN RYAN EXPRESSWAY)
 EROSION CONTROL PLAN
 NB I-57
 STA. 214+50.00 TO 225+50.00
 (SHEET 3 OF 28)

SCALE: 1"=20'
 DATE: MARCH 7, 2006
 DRAWN BY: JJS
 CHECKED BY: MPG

TYLIN INTERNATIONAL

03/07/2006 09:10:39 AM