

NOTES:

- PROPOSED DETOUR TRAILBLAZER TO BE REMOVED AFTER APPROPRIATE ENTRANCE RAMP HAS BEEN OPENED. COST SHALL BE INCLUDED IN TEMPORARY INFORMATION SIGNING. SEE SHEET 1 OF STAGE 1 CONSTRUCTION SIGNING PLANS FOR TRAILBLAZER SIZE.
- REMOVED SIGN PANEL SHALL BECOME THE PROPERTY OF CONTRACTOR AND BE DISPOSED OFFSITE.
- RELOCATION OF SIGNS SHALL BE INCLUDED IN THE COST OF TEMPORARY INFORMATION SIGNING.

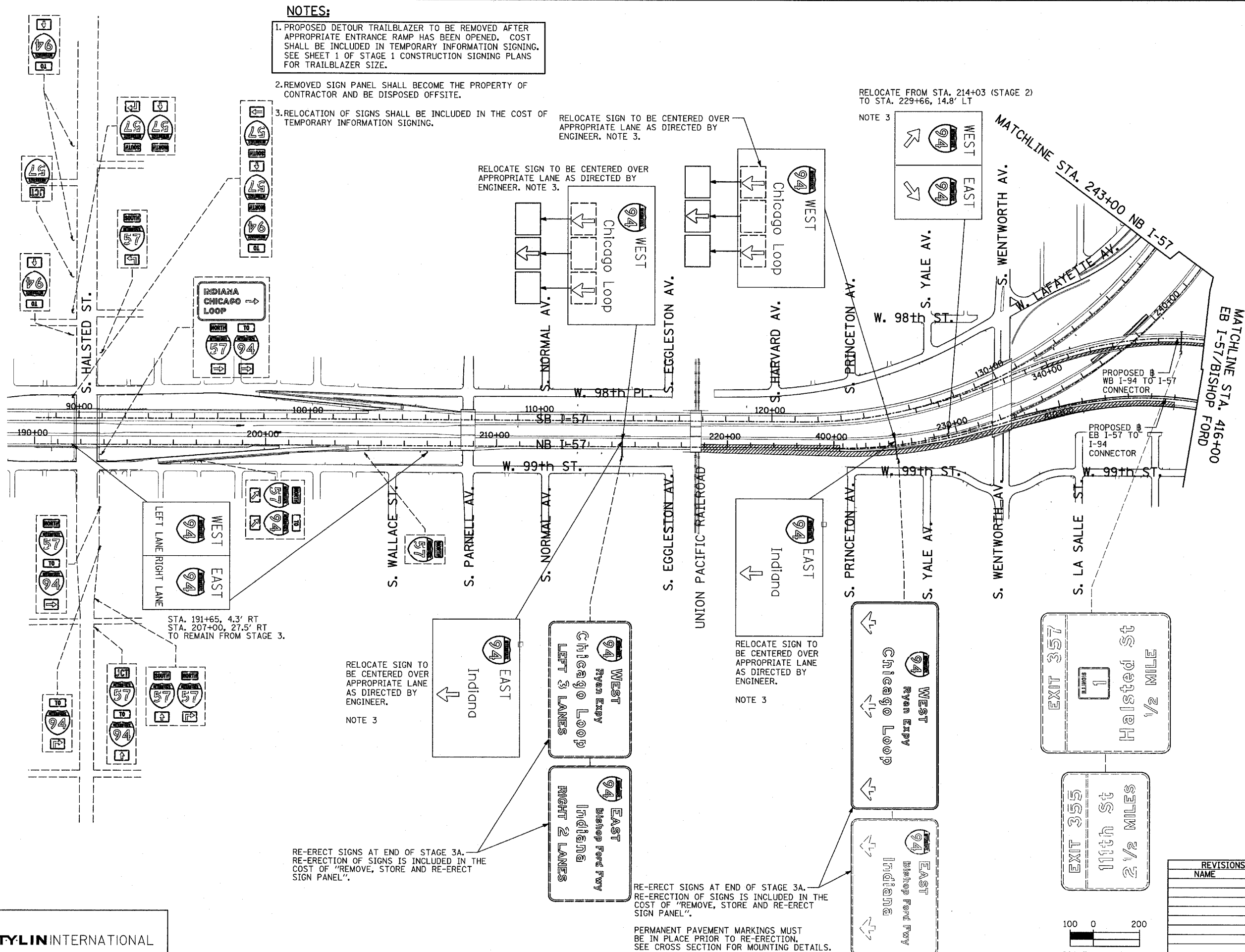
RELOCATE SIGN TO BE CENTERED OVER APPROPRIATE LANE AS DIRECTED BY ENGINEER. NOTE 3.

RELOCATE FROM STA. 214+03 (STAGE 2) TO STA. 229+66, 14.8' LT

NOTE 3

SIGNING LEGEND:

- EXISTING GROUND MOUNTED SIGN
- EXISTING OVERHEAD TRUSS MOUNTED SIGN
- EXISTING OVERHEAD SIGN STRUCTURE-BRIDGE MOUNTED
- EXISTING OVERHEAD CANTILEVER MOUNTED SIGN
- PROPOSED GROUND MOUNTED SIGN
- PROPOSED OVERHEAD SIGN STRUCTURE - TRUSS
- CONSTRUCTION ZONE
- EXISTING SIGN
- EXISTING SIGN TO BE REMOVED
- PROPOSED SIGN



STA. 191+65, 4.3' RT
 STA. 207+00, 27.5' RT
 TO REMAIN FROM STAGE 3.

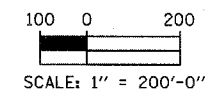
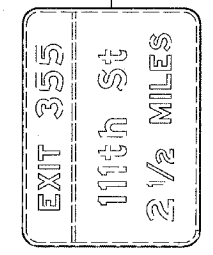
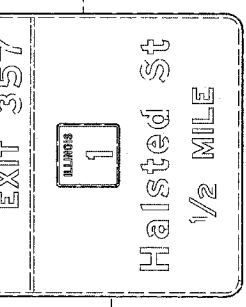
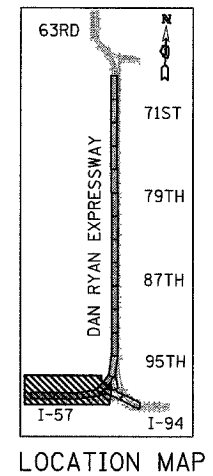
RELOCATE SIGN TO BE CENTERED OVER APPROPRIATE LANE AS DIRECTED BY ENGINEER.
 NOTE 3

RELOCATE SIGN TO BE CENTERED OVER APPROPRIATE LANE AS DIRECTED BY ENGINEER.
 NOTE 3

RE-ERECT SIGNS AT END OF STAGE 3A. RE-ERECTION OF SIGNS IS INCLUDED IN THE COST OF "REMOVE, STORE AND RE-ERECT SIGN PANEL".

RE-ERECT SIGNS AT END OF STAGE 3A. RE-ERECTION OF SIGNS IS INCLUDED IN THE COST OF "REMOVE, STORE AND RE-ERECT SIGN PANEL".

PERMANENT PAVEMENT MARKINGS MUST BE IN PLACE PRIOR TO RE-ERECTION. SEE CROSS SECTION FOR MOUNTING DETAILS.



REVISIONS	
NAME	DATE

ILLINOIS DEPARTMENT OF TRANSPORTATION
 F.A.I. 94 (DAN RYAN EXPRESSWAY)
 CONSTRUCTION SIGNING-STAGE 3A
 STA. 190+00 TO STA. 416+00
 SHEET 1 OF 2

SCALE: 1" = 200'
 DATE: MARCH 7, 2006
 DRAWN BY: AMB
 CHECKED BY: TGB