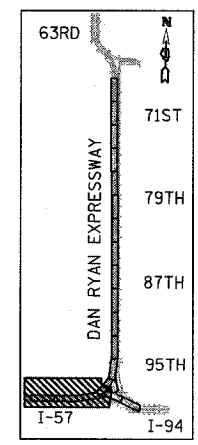


F.A.I. RTE.	SECTION	COUNTY	TOTAL SHEETS	SHEET NO.
94		COOK	916	265
STA. 190+65 (NB I-57) TO STA. 2316+00 (NB RYAN)				
FED. ROAD DIST. NO. ILLINOIS FED. AID PROJECT				
• (1516, 1, 1717, & 1818) R-4				

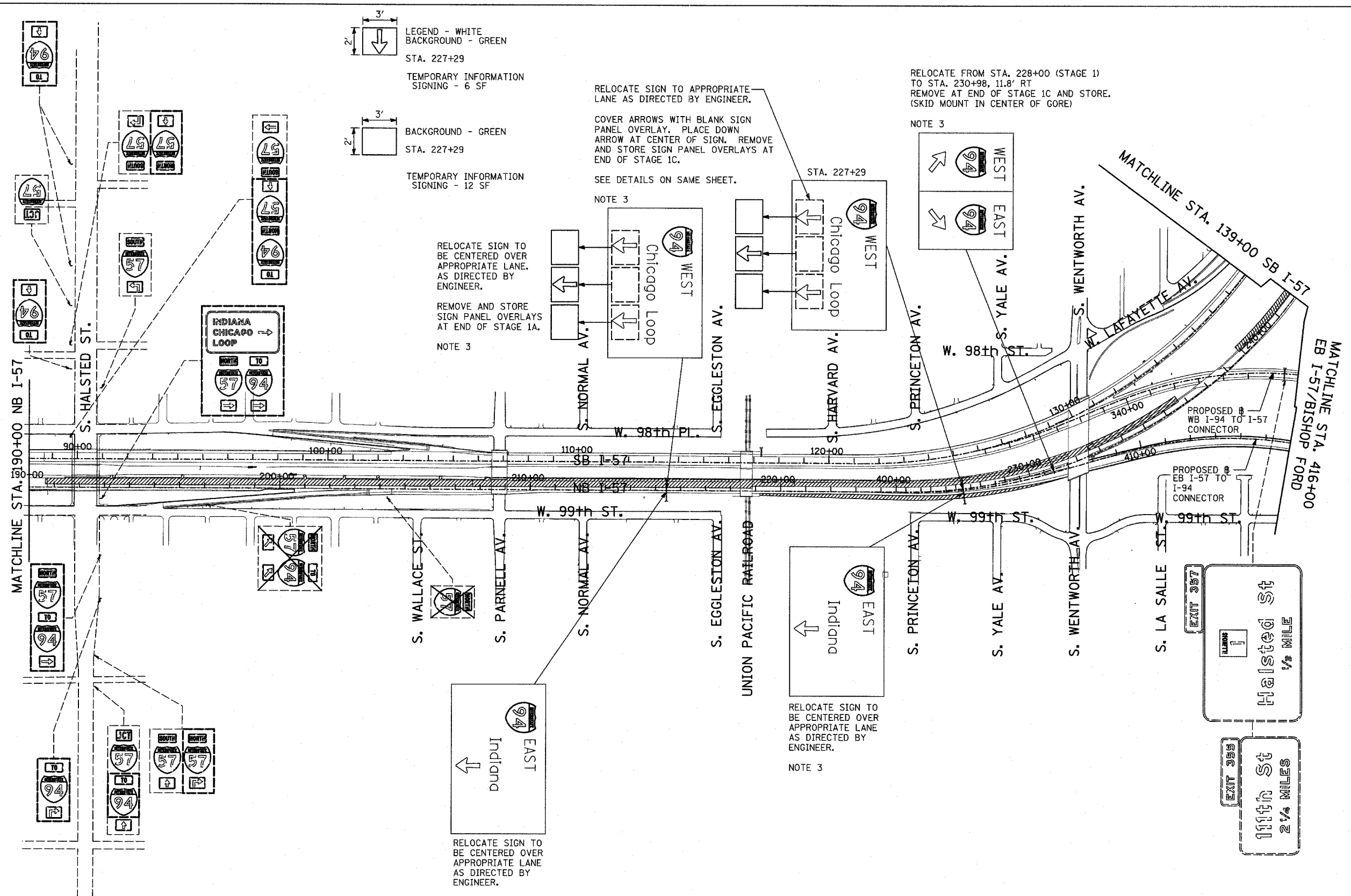
62304

SIGNING LEGEND:

- - - EXISTING GROUND MOUNTED SIGN
- - - EXISTING OVERHEAD TRUSS MOUNTED SIGN
- - - EXISTING OVERHEAD SIGN STRUCTURE-BRIDGE MOUNTED
- - - EXISTING OVERHEAD CANTILEVER MOUNTED SIGN
- - - PROPOSED GROUND MOUNTED SIGN
- - - PROPOSED OVERHEAD SIGN STRUCTURE - TRUSS
- ▨ CONSTRUCTION ZONE
- ◁ EXISTING SIGN
- ◁ EXISTING SIGN TO BE REMOVED
- ▷ PROPOSED SIGN



LOCATION MAP



LEGEND - WHITE BACKGROUND - GREEN
 STA. 227+29
 TEMPORARY INFORMATION SIGNING - 6 SF

BACKGROUND - GREEN
 STA. 227+29
 TEMPORARY INFORMATION SIGNING - 12 SF

RELOCATE SIGN TO APPROPRIATE LANE AS DIRECTED BY ENGINEER.

COVER ARROWS WITH BLANK SIGN PANEL OVERLAY. PLACE DOWN ARROW AT CENTER OF SIGN. REMOVE AND STORE SIGN PANEL OVERLAYS AT END OF STAGE 1C.

SEE DETAILS ON SAME SHEET.

RELOCATE SIGN TO BE CENTERED OVER APPROPRIATE LANE. AS DIRECTED BY ENGINEER.

REMOVE AND STORE SIGN PANEL OVERLAYS AT END OF STAGE 1A.

NOTE 3

RELOCATE FROM STA. 228+00 (STAGE 1) TO STA. 230+98, 11.8' RT REMOVE AT END OF STAGE 1C AND STORE. (SKID MOUNT IN CENTER OF GORE)

NOTE 3

RELOCATE SIGN TO BE CENTERED OVER APPROPRIATE LANE AS DIRECTED BY ENGINEER.

NOTE 3

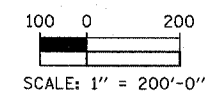
RELOCATE SIGN TO BE CENTERED OVER APPROPRIATE LANE AS DIRECTED BY ENGINEER.

NOTE 3

NOTES:

1. PROPOSED DETOUR TRAILBLAZER TO BE REMOVED AFTER APPROPRIATE ENTRANCE RAMP HAS BEEN OPENED. COST SHALL BE INCLUDED IN TEMPORARY INFORMATION SIGNING. SEE SHEET 1 OF STAGE 1 CONSTRUCTION SIGNING PLANS FOR TRAILBLAZER SIZE.
2. REMOVED SIGN PANEL SHALL BECOME THE PROPERTY OF CONTRACTOR AND BE DISPOSED OFFSITE.
3. RELOCATION OF SIGNS SHALL BE INCLUDED IN THE COST OF TEMPORARY INFORMATION SIGNING.

TYLIN INTERNATIONAL



REVISIONS	
NAME	DATE

ILLINOIS DEPARTMENT OF TRANSPORTATION
 F.A.I. 94 (DAN RYAN EXPRESSWAY)

CONSTRUCTION SIGNING-STAGE 1A
 STA. 190+00 TO STA. 416+00
 SHEET 2 OF 4

SCALE: 1" = 200'
 DATE: MARCH 7, 2006

DRAWN BY: AMB
 CHECKED BY: TGB