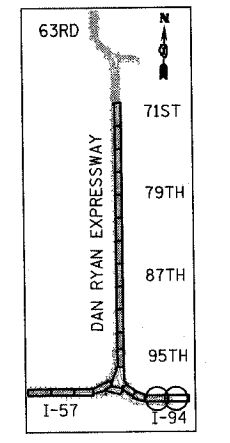
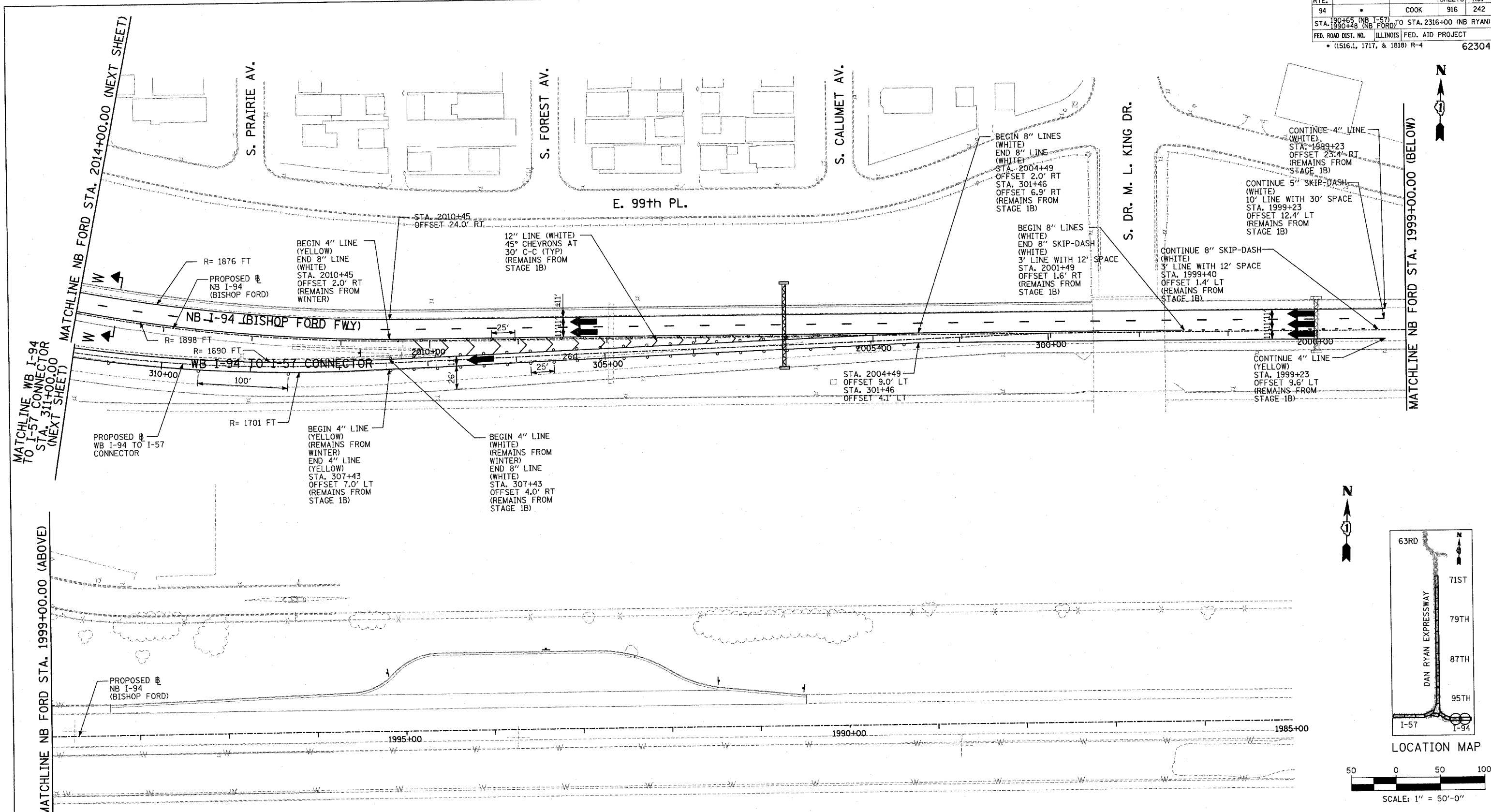
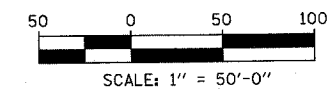


F.A.I. RTE.	SECTION	COUNTY	TOTAL SHEETS	SHEET NO.
94		COOK	916	242
STA. 190+65 (NB I-57) TO STA. 2316+00 (NB RYAN)				
FED. ROAD DIST. NO. ILLINOIS FED. AID PROJECT				
• (1516.1, 1717, & 1818) R-4				

62304



LOCATION MAP



LEGEND:

	TEMPORARY CONCRETE BARRIER		DRUM WITH MONO-DIRECTIONAL STEADY BURNING LIGHT
	TRAFFIC LANE		ARROW BOARD
	WORK ZONE		TEMPORARY PAVEMENT
	BARRICADE, TYPE III		

REVISIONS	
NAME	DATE

ILLINOIS DEPARTMENT OF TRANSPORTATION
 F.A.I. 94 (DAN RYAN EXPRESSWAY)
 MAINTENANCE OF TRAFFIC PLAN
 STAGE 3 - NB I-94
 NB FORD STA. 1985+00 TO 2014+00
 SHEET 2 OF 9

SCALE: 1"=50'-0"
 DATE: MARCH 7, 2006
 DRAWN BY: JDF
 CHECKED BY: RTM

TYLIN INTERNATIONAL

3/3/2006 3:40:55 PM