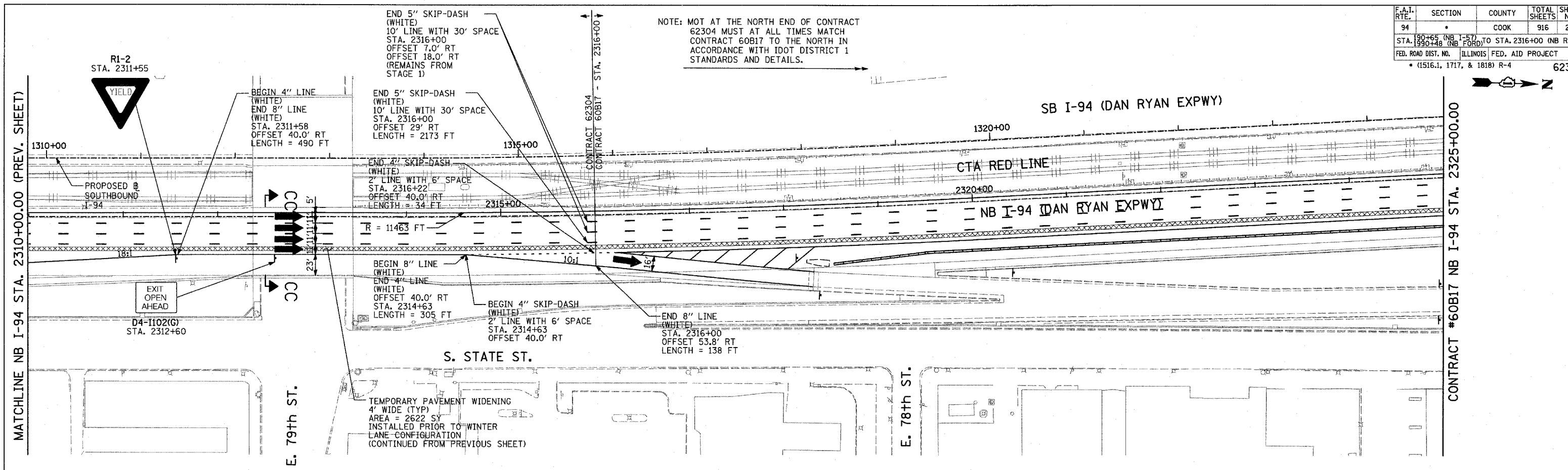
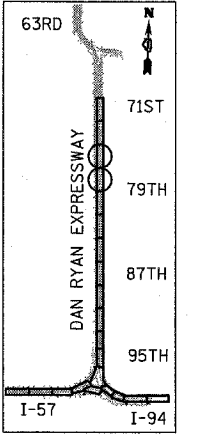


F.A.I. RTE.	SECTION	COUNTY	TOTAL SHEETS	SHEET NO.
94		COOK	916	229
STA. 190+65 (NB I-57) TO STA. 2316+00 (NB RYAN)				
FED. ROAD DIST. NO. ILLINOIS FED. AID PROJECT				
• (1516.1, 1717, & 1818) R-4 62304				

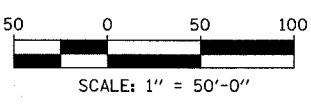
NOTE: MOT AT THE NORTH END OF CONTRACT 62304 MUST AT ALL TIMES MATCH CONTRACT 60B17 TO THE NORTH IN ACCORDANCE WITH IDOT DISTRICT 1 STANDARDS AND DETAILS.



TEMPORARY PAVEMENT WIDENING
4' WIDE (TYP)
AREA = 2622 SY
INSTALLED PRIOR TO WINTER
LANE CONFIGURATION
(CONTINUED FROM PREVIOUS SHEET)



LOCATION MAP



- LEGEND:**
- TEMPORARY CONCRETE BARRIER
 - TRAFFIC LANE
 - WORK ZONE
 - BARRICADE, TYPE III
 - DRUM WITH MONO-DIRECTIONAL STEADY BURNING LIGHT
 - ARROW BOARD
 - TEMPORARY PAVEMENT

REVISIONS	
NAME	DATE

ILLINOIS DEPARTMENT OF TRANSPORTATION
F.A.I. 94 (DAN RYAN EXPRESSWAY)
MAINTENANCE OF TRAFFIC PLAN
WINTER LANE CONFIGURATION - NB I-94
NB I-94 STA. 2310+00 TO 2340+00
SHEET 10 OF 10
SCALE: 1"=50'-0" DRAWN BY: RTM
DATE: MARCH 7, 2006 CHECKED BY: JDF

TYLIN INTERNATIONAL

3/3/2006 3:39:03 PM