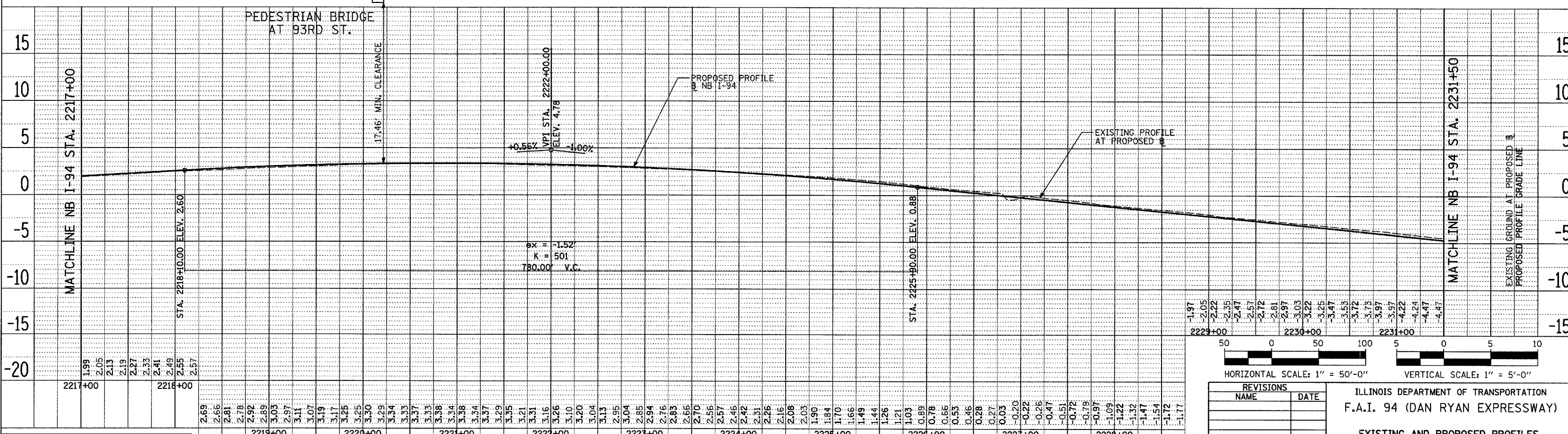
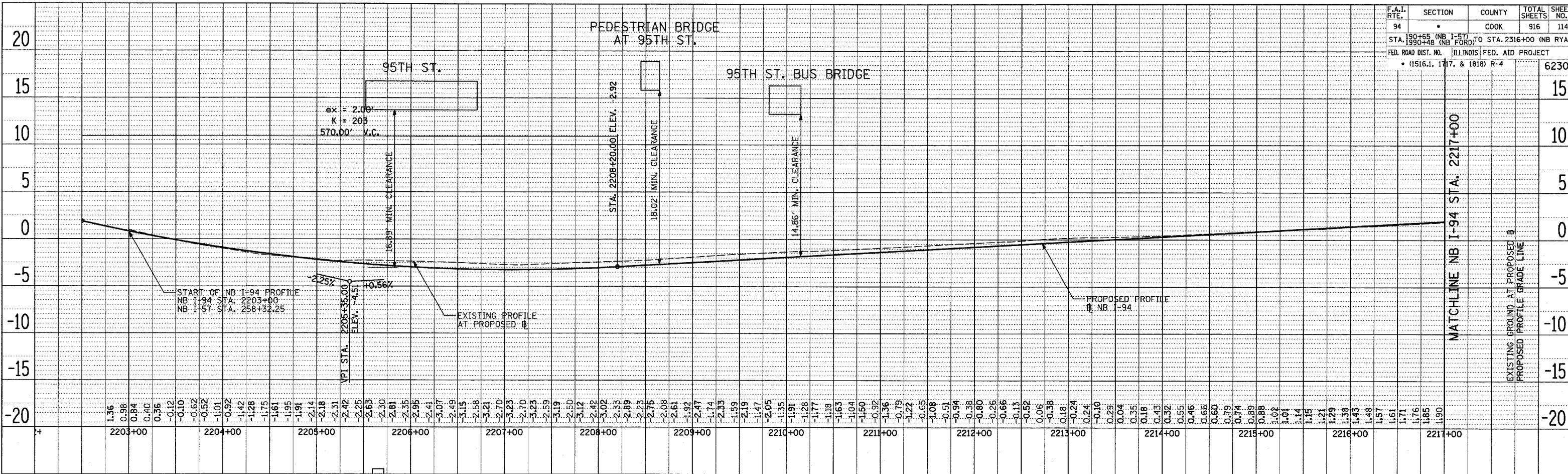


F.A.I. RTE.	SECTION	COUNTY	TOTAL SHEETS	SHEET NO.
94		COOK	916	114
STA. 190+65 (NB I-57) TO STA. 190+48 (NB FORD)		TO STA. 2316+00 (NB RYAN)		
FED. ROAD DIST. NO.		ILLINOIS FED. AID PROJECT		
(1516.1, 1717, & 1818) R-4				62304



ILLINOIS DEPARTMENT OF TRANSPORTATION
F.A.I. 94 (DAN RYAN EXPRESSWAY)

EXISTING AND PROPOSED PROFILES
NB I-94 (DAN RYAN EXPRESSWAY)
STA. 2203+00.00 TO 2231+50.00

SCALE: 1"=50' HORIZ.
1"=5' VERT.
DATE: MARCH 7TH, 2006

DRAWN BY: JPM
CHECKED BY: MPG

REVISIONS	
NAME	DATE

HORIZONTAL SCALE: 1" = 50'-0"
VERTICAL SCALE: 1" = 5'-0"

TYLIN INTERNATIONAL

PLAN	SURVEYED	BY	DATE
	PLOTTED		
	FILED		
	RT. OF WAY CHECKED		
	NO. OF WAY CHECKED		
	CADD FILE NAME		
	NO.		

PLAN	SURVEYED	BY	DATE
	PLOTTED		
	FILED		
	RT. OF WAY CHECKED		
	NO. OF WAY CHECKED		
	CADD FILE NAME		
	NO.		