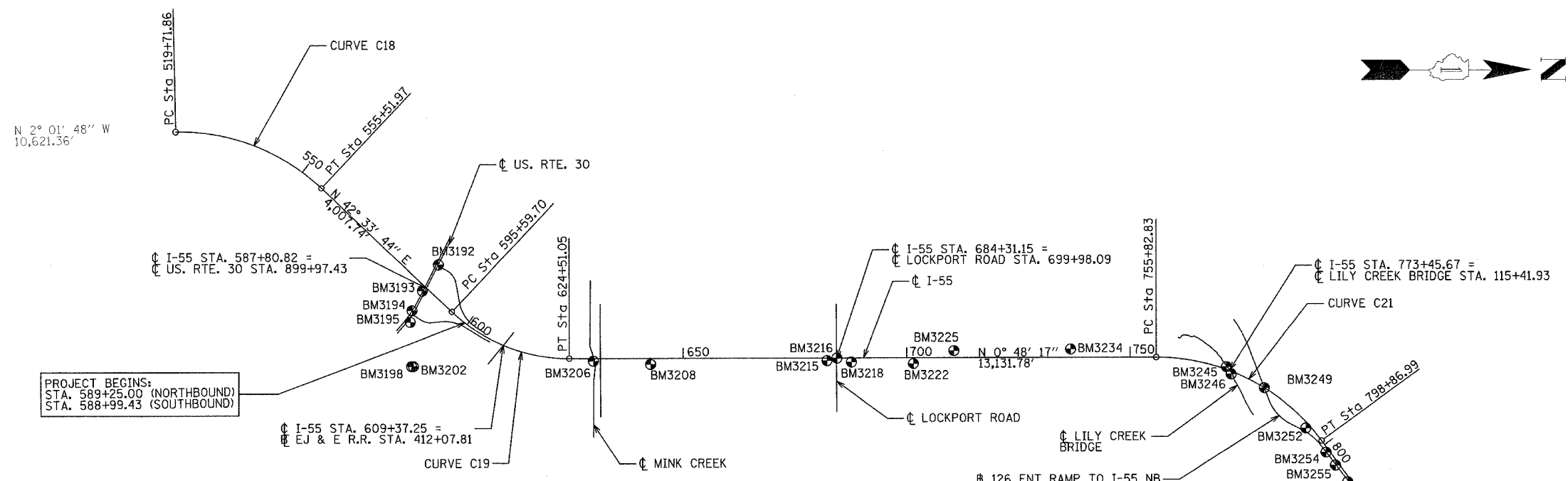


F.A. RTE.	SECTION	COUNTY	TOTAL SHEETS	SHEET NO.
55	100 (I&2) I-9	WILL.	59	10
STA.		TO STA.		
FED. ROAD DIST. NO.		ILLINOIS FED. AID PROJECT		
ALT-01 OF 02				



I-55 HORIZONTAL CURVE STATIONING AND COORDINATES

Curve C18					
P.I. Station	538+58.11	N	1,787,209.5940	E	1,025,846.5130
P.C. Station	519+71.86	N	1,785,324.5340	E	1,025,913.3325
P.T. Station	555+51.97	N	1,788,598.8912	E	1,027,122.3536
C.C.		N	1,785,487.4872	E	1,030,510.4453
Curve C19					
P.I. Station	610+78.59	N	1,792,669.4770	E	1,030,860.5160
P.C. Station	595+59.70	N	1,791,550.7503	E	1,029,833.1498
P.T. Station	624+51.05	N	1,794,188.2184	E	1,030,839.1839
C.C.		N	1,794,134.5684	E	1,027,019.5607
Curve C21					
P.I. Station	779+08.16	N	1,809,643.8028	E	1,030,622.0964
P.C. Station	755+82.83	N	1,807,318.7012	E	1,030,654.7545
P.T. Station	798+86.99	N	1,811,044.1989	E	1,032,478.4516
C.C.		N	1,807,383.1093	E	1,035,240.3022
Curve C22					
P.I. Station	876+59.44	N	1,815,725.0390	E	1,038,683.3400
P.C. Station	868+86.37	N	1,815,259.4686	E	1,038,066.1831
P.T. Station	884+30.18	N	1,816,103.8189	E	1,039,357.2571
C.C.		N	1,806,078.8034	E	1,044,991.8879
Curve C23A					
P.I. Station	913+53.27	N	1,817,536.0353	E	1,041,905.4262
P.C. Station	905+68.87	N	1,817,151.7072	E	1,041,221.6378
P.T. Station	921+36.43	N	1,817,984.8204	E	1,042,548.7508
C.C.		N	1,831,230.3159	E	1,033,308.6562
Point	3024 Sta 985+58.31	N	1,821,659.0478	E	1,047,815.6842

PROJECT BEGINS:
STA. 589+25.00 (NORTHBOUND)
STA. 588+99.43 (SOUTHBOUND)

PROJECT ENDS:
STA. 918+12.73 (NORTHBOUND)
STA. 921+11.03 (SOUTHBOUND)

CURVE C18	CURVE C19	CURVE C21	CURVE C22	CURVE C23A
PI STA. = 538+58.11	PI STA. = 610+78.59	PI STA. = 779+08.16	PI STA. = 876+59.44	PI STA. = 913+53.27
Δ = 44° 35' 33" (RT)	Δ = 43° 22' 01" (LT)	Δ = 53° 46' 28" (RT)	Δ = 7° 41' 30" (RT)	Δ = 5° 33' 41" (LT)
D = 1° 14' 44"	D = 1° 30' 00"	D = 1° 14' 58"	D = 0° 29' 54"	D = 0° 21' 17"
R = 4,600.00'	R = 3,820.00'	R = 4,586.00'	R = 11,500.00'	R = 16,150.00'
T = 1,886.24'	T = 1,518.89'	T = 2,325.33'	T = 773.07'	T = 784.39'
L = 3,580.11'	L = 2,891.35'	L = 4,304.16'	L = 1,543.82'	L = 1,567.56'
E = 371.71'	E = 290.89'	E = 555.84'	E = 25.95'	E = 19.04'

BENCHMARK INFORMATION

- BM3192 SQUARE CUT NW CORNER OF TRAFFIC SIGNAL MH AT THE SW CORNER OF US RT 30 AND SB I-55 ENTRANCE RAMP AND AT THE BACK OF CURB ELEV. 609.40
- BM3193 SQUARE CUT N EDGE 2' DIAM. CONC. LP BASE *M17 ON THE S SIDE OF US RT 30 AND FIRST LP, E OF I-55 ELEV. 611.65
- BM3194 SQUARE CUT NE CORNER OF TRAFFIC SIGNAL MH ON THE S SIDE OF US RT 30 AND 50' W OF I-55 NB EXIT RAMP ELEV. 611.66
- BM3195 SQUARE CUT NE EDGE 2' DIAM. CONC. BASE *MK6 ON N. SIDE OF US RT 30 AND FIRST LP E OF I-55 NB ENTRANCE RAMP N 1790623.52 E 1030078.87 ELEV. 611.64
- BM3198 X CUT ON N FLANGE BOLT OF FIRE HYDRANT 50' S OF THE SE CORNER OF ESSINGTON RD AND WESTGATE LANE ELEV. 611.85
- BM3202 FD X ON SE FLANGE BOLT OF FIRE HYDRANT AT THE SE CORNER OF ESSINGTON RD AND E FRONTAGE RD ELEV. 611.21
- BM3206 FD SQUARE CUT ON TOP SE WING WALL OF BRIDGE OVER MINK CREEK AND 200' S OF RENWICK RD STATION 474+41.65 STRUCTURE *099-4615 N 1794728.35 E 1030890.54 ELEV. 606.27
- BM3208 SQUARE CUT ON S END OF A HEADWALL OF A 30" CMP UNDER E FRONTAGE RD AND ABOUT 1/4 MILE N OF RENWICK RD ELEV. 607.15
- BM3212 FD SQUARE CUT ON E HEADWALL OF A 42" CMP ON E SIDE OF E FRONTAGE RD AND ABOUT 1/4 MILE S OF AIRPORT ROAD ELEV 610.86
- BM3215 PK IN E EP OF NB I-55 AT S END OF GUARDRAIL AND 150' S OF AIRPORT ROAD N 1799953.86 E 1030817.31 ELEV. 614.36
- BM3216 SQUARE CUT NEAR NE CORNER OF MIDDLE PIER BETWEEN NB AND SB LANES OF I-55 UNDER AIRPORT ROAD (ALSO LOCKPORT-PLAINFIELD RD) N 1800176.26 E 1030757.08 ELEV. 616.57
- BM3218 SQUARE CUT ON HEADWALL OF 18" RCP ON W SIDE OF E FRONTAGE RD OF I-55 AT BEND IN ROAD TO AIRPORT RD AND ABOUT 150' N OF AIRPORT ROAD N 1800500.75 E 1030841.43 ELEV. 614.90
- BM3222 SQUARE CUT ON HEADWALL OF 30" CMP UNDER THE E FRONTAGE RD AND ON E SIDE ABOUT 600' S OF DOUBLE HIGH LINE N 1801889.01 E 1030859.56 ELEV. 617.37
- BM3225 SQUARE CUT IN SE CORNER OF TRIANGULAR CONC SLAB, 2' HIGH ON THE W SIDE OF THE W FRONTAGE ROAD AND ON THE N SIDE OF A GRAVEL RD RUNNING W, AND ON W SIDE OF RR BRIDGE OF I-55 N 1802788.92 E 1030561.82 ELEV. 621.63
- BM3228 SQUARE CUT ON TOP OF 36" CONC FLARE END SECTION ABOUT ON E ROW OF E FRONTAGE RD ELEV. 618.29
- BM3234 X CUT ON TOP OF NE BOLT OF A 4'X4' SIGN BASE OF A LARGE SIGN AT THE SW CORNER OF THE W FRONTAGE RD OF I-55 AND 143RD ST N 1805400.67 E 1030496.13 ELEV. 624.51

- BM3245 SQUARE CUT ON TOP SW ABUTMENT - WINGWALL CORNER OF SB I-55 BRIDGE OVER LILY CACHE SLOUGH, STATION 616+85 1958 *099-0025 N 1808892.16 E 1030849.27 ELEV. 615.67
- BM3246 FD SQUARE CUT ON TOP OF SE CORNER OF ABUTMENT - WINGWALL OF NB I-55 BRIDGE OVER LILY CACHE SLOUGH STATION 616+85 1956 *099-0024 N 1809000.07 E 1031009.38 ELEV. 615.57
- BM3249 SQUARE CUT ON E EDGE AND S END OF MIDDLE PIER OF RT 126 BRIDGE OVER I-55 N 1809747.63 E 1031312.57 ELEV. 625.30
- BM3252 SQUARE CUT ON W EDGE OF 4' DIAM TALL LP BASE *6-LGH1 NEAR THE NB I-55 GORE AND RT 126 ENTRANCE RAMP ON THE EAST SIDE OF I-55 AND 2ND TALL LP N OF RT 126 BRIDGE N 1810687.16 E 1032199.75 ELEV. 627.21
- BM3254 SQUARE CUT ON W EDGE OF 2' DIAM CONC LP BASE *LG3 AND FIRST SHORT LP ON EAST SIDE I-55 N OF RT 126 BRIDGE N 1811146.87 E 1032738.54 ELEV. 623.54
- BM3255 SQUARE CUT ON E EDGE OF 2' DIAM CONC LP BASE 3 LG4 AND 3RD SHORT LP N OF RT 126 BRIDGE AND NEAR BEND OF E FRONTAGE ROAD N 1811362.57 E 1033027.06 ELEV. 623.01
- BM3256 SQUARE CUT IN N END OF CONC DRIVEWAY AT 13400 BUDLER (DALE COYNE RACING) AT BEND OF E FRONTAGE RD ELEV. 621.81
- BM3265 SQUARE CUT ON TOP OF W HEADWALL OF A 24" BY 36" BOX CULVERT ON W SIDE OF E FRONTAGE RD AND 400' NE OF BUDLER RD N 1811640.74 E 1033392.32 ELEV 623.69
- BM3272 SQUARE CUT ON TOP OF E HEADWALL OF 2-24" CMP UNDER THE E FRONTAGE RD ABOUT 100' S OF "EXIT 263 WEBER RD 1 MILE" SIGN N 1813977.53 E 1036513.68 ELEV. 618.00
- BM3282 SQUARE CUT ON TOP OF FLARED END SECTION ON E SIDE OF E FRONTAGE RD AND AT MM 263 ELEV. 653.10
- BM3285 FD X ON S HEADWALL OF A 4'X10' BOX CULVERT ON S SIDE OF FRONTAGE ROAD AND ABOUT 800' W OF WEBER RD ELEV 638.02
- BM3286 X CUT ON NW TAG BOLT OF FIRE HYDRANT ON THE N SIDE OF FRONTAGE RD AND ON W SIDE OF "GAS CITY" DRIVEWAY ELEV. 644.37
- BM3287 SQUARE CUT SW CORNER OF A 4'X6' CONC. BASE FOR AN IDOT TRAFFIC SIGNAL CONTROL BOX AT THE NW CORNER OF WEBER RD AND SE FRONTAGE RD (NORMANTOWN RD) ELEV. 642.98
- BM3288 SQUARE CUT N EDGE OF 2' DIAM CONC TRAFFIC SIGNAL AND MAST ARM BASE AT THE NE CORNER OF WEBER RD AND FRONTAGE RD (NORMANTOWN RD) ELEV. 642.81
- BM3289 SQUARE CUT ON S EDGE OF 2' DIAM CONC LP BASE NEAR THE SE CORNER OF THE BURGER KING PROPERTY ELEV. 641.56

- NOTES:
- FOR ALIGNMENTS SOUTH OF US. RTE. 30 SEE ADJACENT CONTRACT NO. C-60A68

REVISIONS	
NAME	DATE

ILLINOIS DEPARTMENT OF TRANSPORTATION
FAI ROUTE 55
US RTE. 30 TO WEBER ROAD
ALIGNMENT, TIES AND
BENCHMARKS

SCALE: 1"=1500'
DATE: 03-15-06
DRAWN BY: RH
CHECKED BY: DVS



FINAL