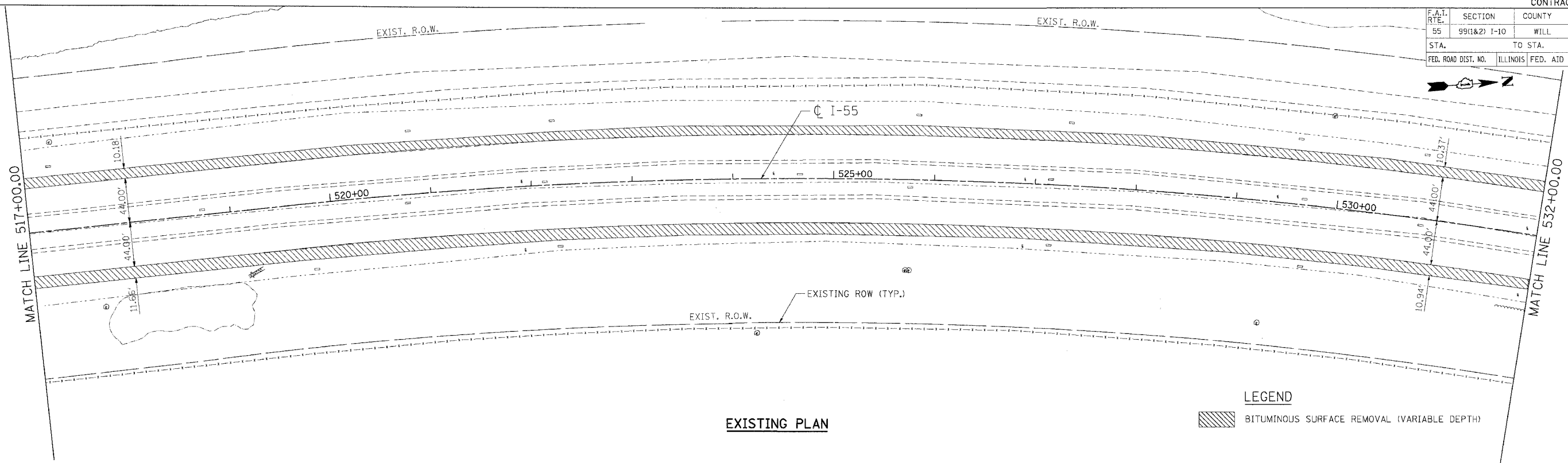


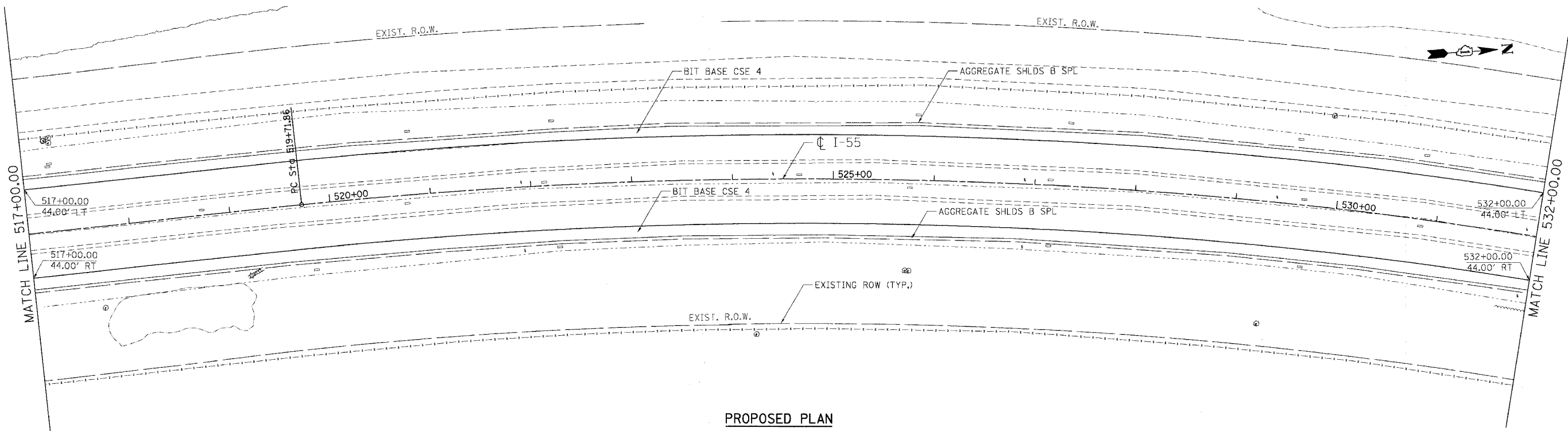
F.A.I. RTE.	SECTION	COUNTY	TOTAL SHEETS	SHEET NO.
55	99(1&2) I-10	WILL	52	29
STA.		TO STA.		
FED. ROAD DIST. NO.		ILLINOIS	FED. AID PROJECT	



EXISTING PLAN

LEGEND

	BITUMINOUS SURFACE REMOVAL (VARIABLE DEPTH)
--	---



PROPOSED PLAN

PLOT DATE = DATE
 FILE NAME = FILEL
 PLOT SCALE = SCALE
 USER NAME = USER
 S:\DOCUMENT\2025\2511\CIVIL\DRAWING\2511.PLOT

REVISIONS	
NAME	DATE

ILLINOIS DEPARTMENT OF TRANSPORTATION
 FAI ROUTE 55 (I-80 TO U.S. 30)
 SHOULDER MILLING AND RESURFACING

**ROADWAY PLAN
 FAI 55
 STA. 517+00.00 TO STA. 532+00.00**

SCALE: 1"=50'
 DATE 03/15/06
 DRAWN BY OP
 CHECKED BY DDH

TENG
 TENG & ASSOCIATES, INC.
 ENGINEERS/ARCHITECTS/PLANNERS
 CHICAGO, ILLINOIS