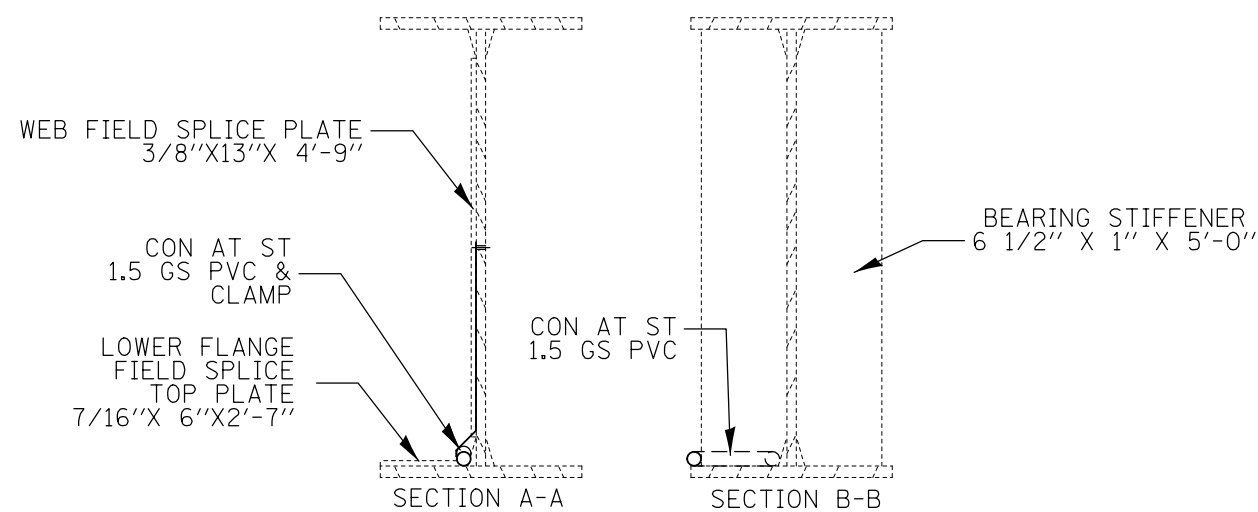


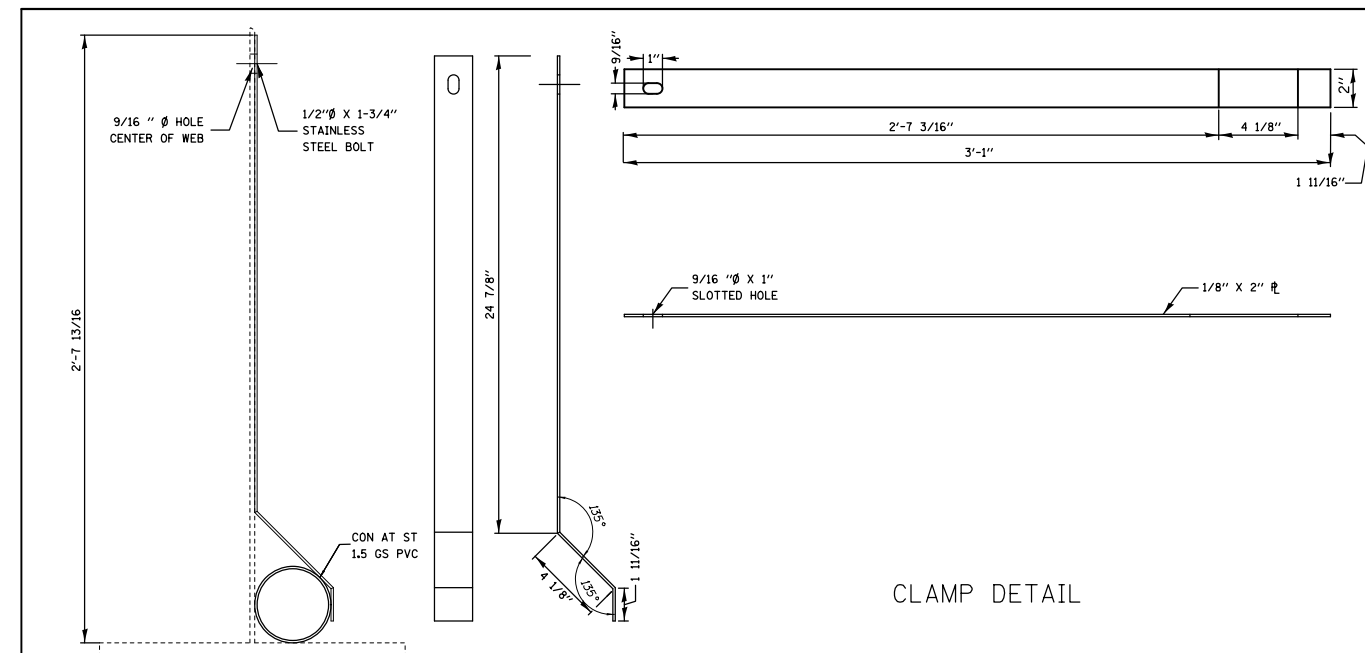
TYPICAL STINGER ELEVATION

THE GIRDER WEB IS 60" X 9/16" FLANGE IS NOMINALLY 6 5/8"
 THE LOWER FLANGE FIELD SPLICE TOP PLATE IS 7/16" X 6" X 2'-7"
 THE WEB SPLICE PLATE IS 3/8" X 13" X 4'-9"
 THE BEARING STIFFENERS ARE 6 1/2" X 1" X 5'-0"

THE COST OF GRIDER DRILLING, FURNISHING AND INSTALLING CLAMPS AND CONFORMING CONDUIT AROUND AND/OR OVER BEARING STIFFENERS AND FIELD SPLICES SHALL BE INCLUDED IN THE UNIT PRICE OF THE CONDUIT ATTACHED TO STRUCTURE.



CONDUIT ATTACHED TO STRUCTURE
 OVER CAHOKIA CANAL AT
 STA. 1479+10 (STR. NO. 060-0219)



CLAMP DETAIL

FILE NAME =	USER NAME = prestonme	DESIGNED -	REVISED -
et:\pwork\pwork\prestonme\d0298000\d0298000.dwg	76f77-shr-ITS.dgn	DRAWN -	REVISED -
	PLOT SCALE = 100.0000' / 1in.	CHECKED -	REVISED -
	PLOT DATE = 3/21/2013	DATE -	REVISED -

STATE OF ILLINOIS
 DEPARTMENT OF TRANSPORTATION

CONDUIT ATTACHED TO STRUCTURE (CAHOKIA CANAL)

SCALE: SHEET NO. OF SHEETS STA. TO STA.

•=FAI 270/FAI 255/FAI 55/70

F.A.I. RTE.	SECTION	COUNTY	TOTAL SHEETS	SHEET NO.
•	DIST 8 ITS 2013-1	MADISON	27	27
CONTRACT NO. 76F77				
FED. ROAD DIST. NO. ILLINOIS FED. AID PROJECT				