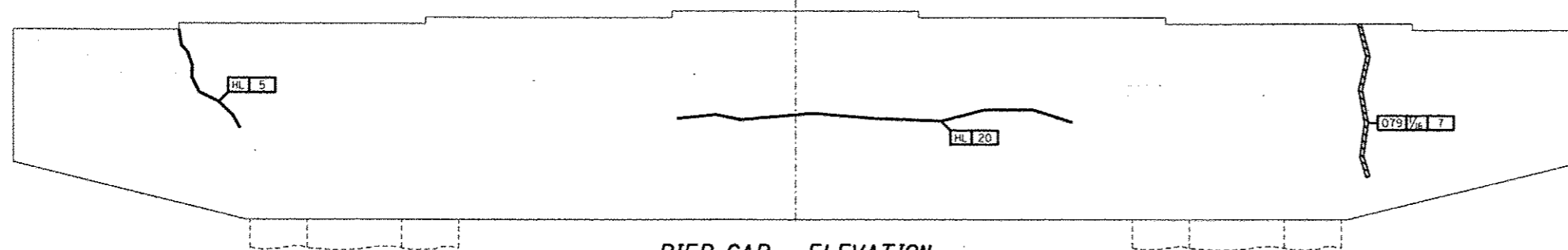
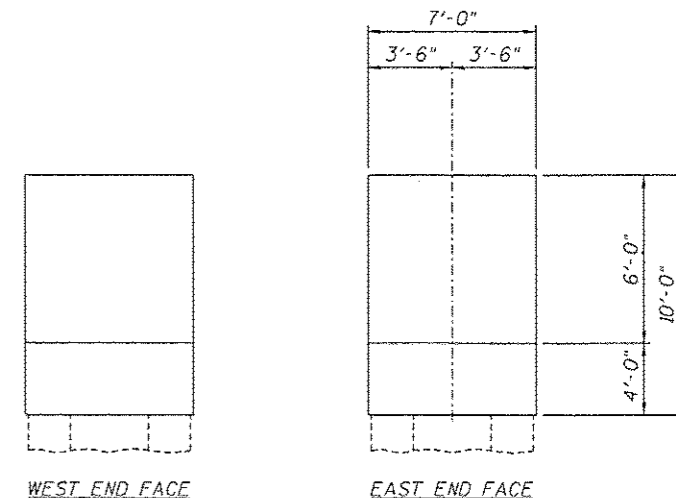


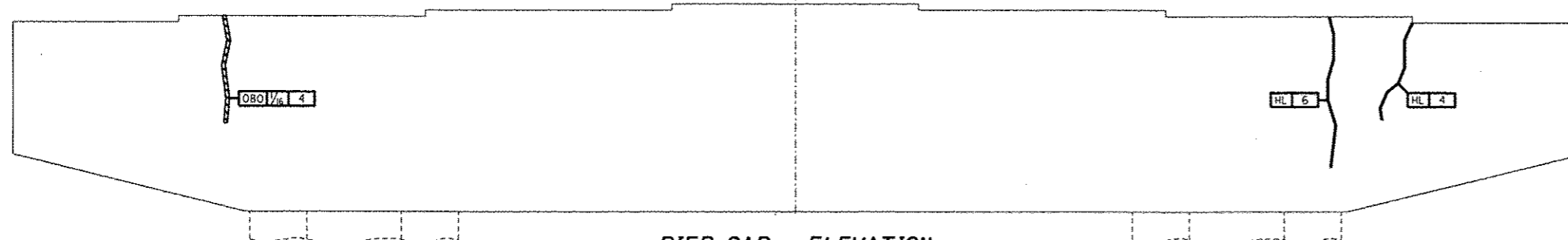
PIER CAP - PLAN - PIER 4



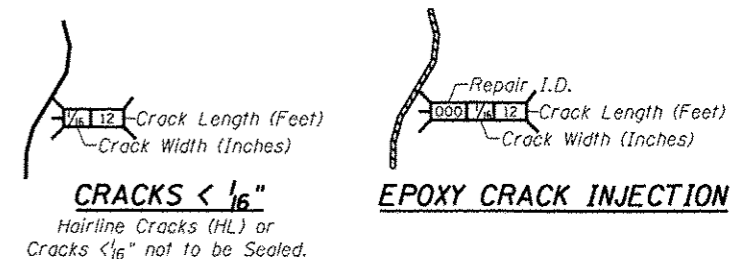
PIER CAP - ELEVATION
Looking North



PIER CAP - END ELEVATIONS



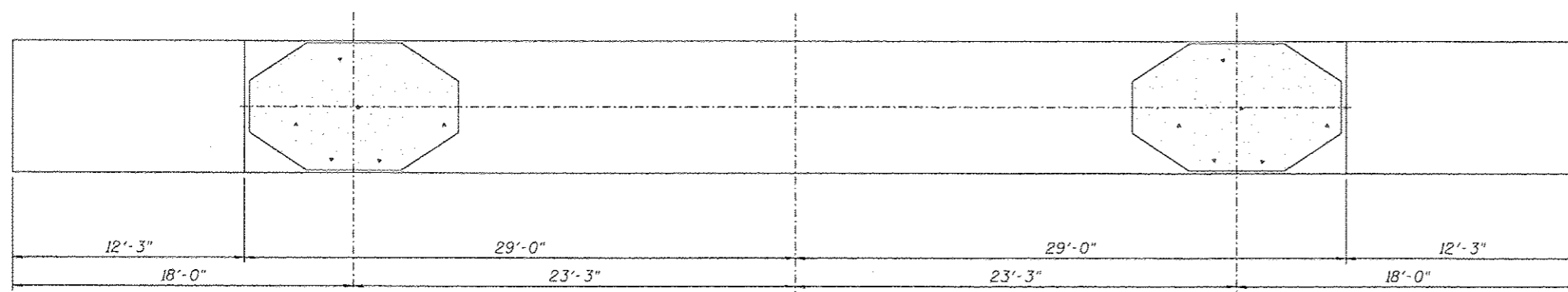
PIER CAP - ELEVATION
Looking South



CRACKS < 1/16"

Hairline Cracks (HL) or
Cracks < 1/16" not to be Sealed.

EPOXY CRACK INJECTION



PIER CAP - UNDERSIDE

REPAIRS LIST - PIER 4 - CAP

I.D.	Description	Pay Item	Units	Quantity
078	Cracks > 1/16"	Epoxy Crack Injection	FOOT	7
079	Cracks > 1/16"	Epoxy Crack Injection	FOOT	7
080	Cracks > 1/16"	Epoxy Crack Injection	FOOT	4
-	-	-	-	-
-	-	-	-	-

DESIGNED -	EXAMINED _____	DATE - _____
CHECKED -	ENGINEER OF STRUCTURAL SERVICES	
DRAWN Rod	PASSED _____	
CHECKED MNM	ENGINEER OF BRIDGES AND STRUCTURES	

STATE OF ILLINOIS
DEPARTMENT OF TRANSPORTATION

REPAIRS TO - PIER NUMBER 4 - CAP
STRUCTURE NO. 060-0255

SHEET NO. 23 OF 48 SHEETS

F.A.P. RTE. 304	SECTION 100B-IDS-1	COUNTY MADISON	TOTAL SHEETS 58	SHEET NO. 33
CONTRACT NO. 76E73				
ILLINOIS FED. AID PROJECT				