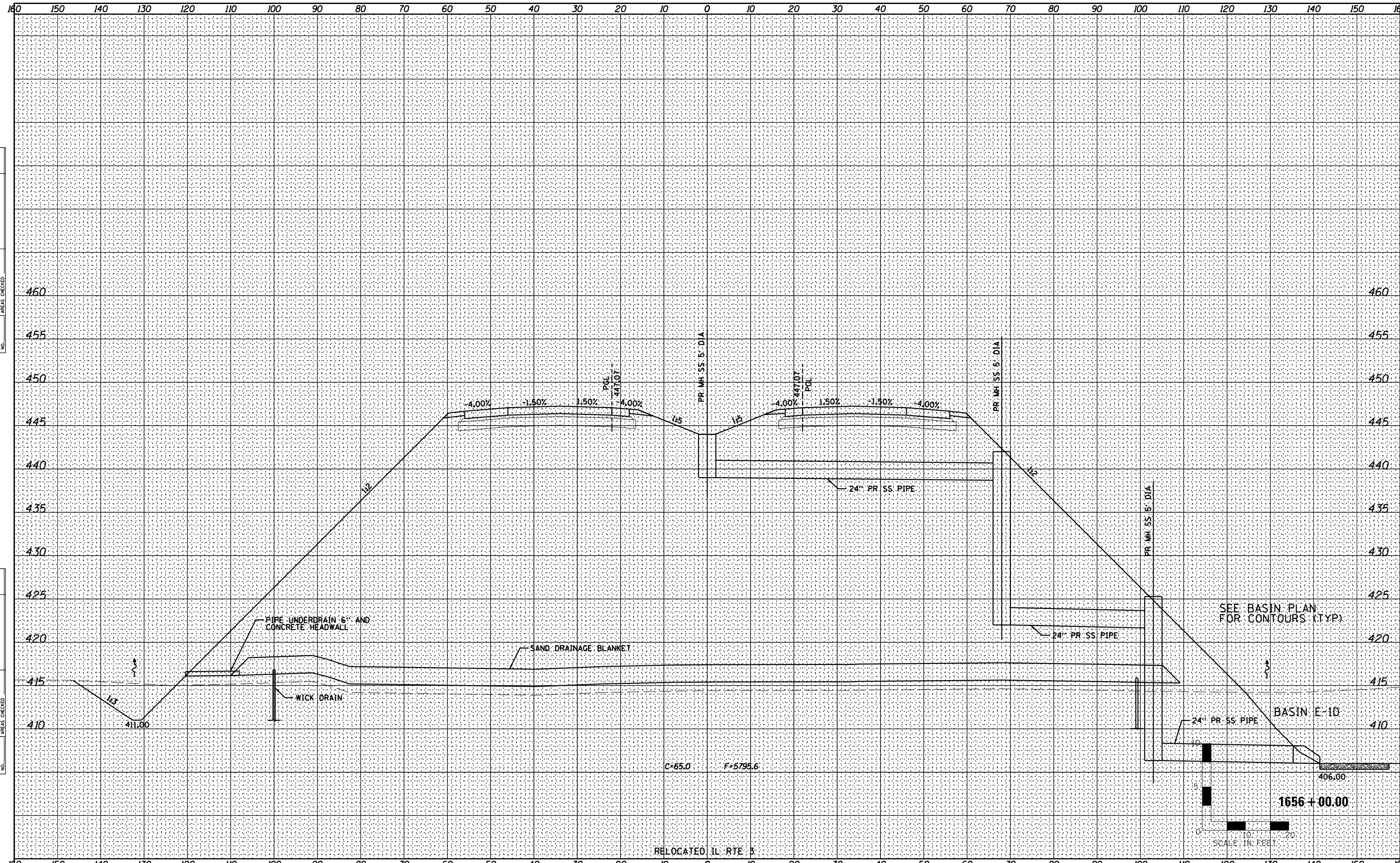


DATE	
BY	
FINAL SURVEY	SURVEYED
NOTE BOOK	PLOTTED
NO.	TEMPLATE
	AREAS CHECKED

DATE	
BY	
ORIGINAL SURVEY	SURVEYED
NOTE BOOK	PLOTTED
NO.	TEMPLATE
	AREAS CHECKED



Farnsworth GROUP INC.
 2709 McGraw Drive
 Bloomington, Illinois 61704
 309/663-8435, 309/663-1571 fax

USER NAME = dmeyer	DESIGNED - JJ0	REVISED - 02/06/13
	DRAWN - JJ0	REVISED - 03/15/13
PLOT SCALE = 1/8" = 1'-0"	CHECKED - PJM	REVISED -
PLOT DATE = 2/25/2013	DATE - 12/10/12	REVISED -

**STATE OF ILLINOIS
 DEPARTMENT OF TRANSPORTATION**

CROSS SECTIONS

SCALE: SHEET NO. OF SHEETS STA. 1656+00.00 TO STA. 1656+00.00

F.A.P. RTE.	SECTION	COUNTY	TOTAL SHEETS	SHEET NO.
788	520-1-2HVB, 520-1-2HVB-1	ST. CLAIR	237	213
CONTRACT NO. 76848				

ILLINOIS FED. AID PROJECT