

TABLE OF CHAIN LINK FENCE COMPONENTS		
COMPONENT	ASTM DESIGNATION	COMPONENT INFORMATION
Posts	F 1083	Galvanized Steel Pipe - 3" NPS, Schedule 40 (3.500" Outside Diameter, 0.216" Wall Thickness)
Chain Link Fabric (2" mesh with twisted top and knuckled bottom selvage)	A 392	Zinc Coated Steel - No. 9 Gauge (coated wire diameter), Class 2 Coating
	A 491	Aluminum Coated Steel - No. 9 Gauge (coated wire diameter)
	F 668	Polyvinyl Chloride (PVC) Coated Steel - No. 9 Gauge Zinc Coated Wire (metallic-coated core wire diameter) $\phi$ Specify the color of the polymer coating in the General Notes
Tie Wires	F 626	Zinc Coated Steel Wire - No. 9 Gauge
Brace Bands	F 626	No. 12 Gauge (min. thickness) x 3/4" (min. width) Steel Bands (Beveled or Heavy)
Tension Bars	F 626	3/16" (min. thickness) x 3/4" (min. width) x 5'-10" (min. height) Steel Bars
Tension Bands	F 626	No. 14 Gauge (min. thickness) x 3/4" (min. width) Steel Bands
Miscellaneous Fence Components	F 626	Zinc Coated Steel - (includes post or loop caps, horizontal and brace rail ends, combination rail ends, boulevard clamps and all other miscellaneous fittings & hardware)
Tension Wire	A 824 & A 817	Type II (Zinc Coated Steel Wire) - No. 7 Gauge, Class 4 Coating
		Type I (Aluminum Coated Steel Wire) - No. 7 Gauge
Hog Rings	F 626	Zinc Coated Steel Wire - No. 12 Gauge
Brace Rails	F 1083	Galvanized Steel Pipe - 1 1/4" NPS, Schedule 40 (1.660" Outside Diameter, 0.140" Wall Thickness)

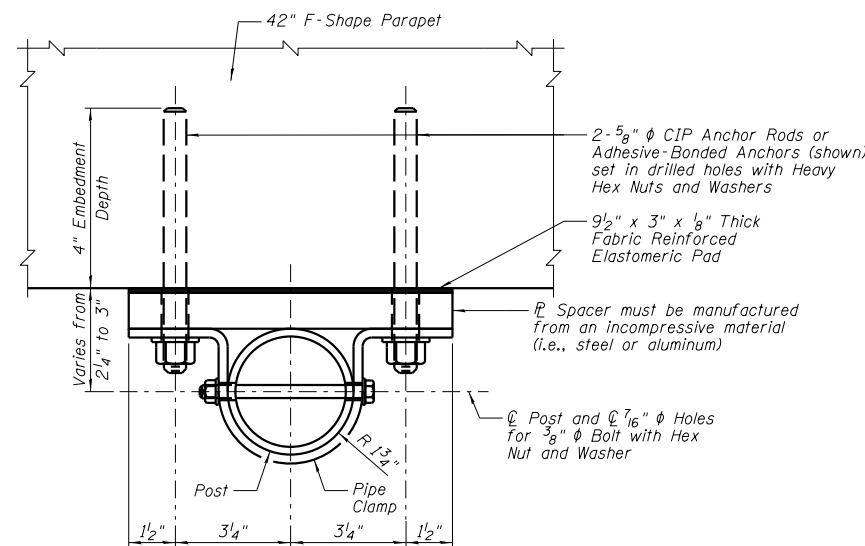
LEGEND: NPS = Nominal Pipe Size

TABLE OF POST ATTACHMENT COMPONENTS		
COMPONENT	ASTM DESIGNATION	COMPONENT INFORMATION
Pipe Clamps	A 36 or A 709 Grade 36	1/4" Steel $\bar{R}$
Shim Plates	A 36 or A 709 Grade 36 or B 209 Alloy 6061-T6 or B 221 Alloy 6063-T5	Plate thicknesses as required; Holes in shim plates will be 3/4" $\phi$
Spacers	-	Variable $\bar{R}$ thickness, see Spacer Detail
Adhesive Anchor Rods	F 1554 Grade 36	Fully threaded Headless Anchor Rods 5/8" $\phi$
CIP Anchor Rods	F 1554 Grade 36	Hex Head Anchor Rods 5/8" $\phi$
Bolts	A 307	3/8" $\phi$ x 4 3/4" Hex Head Bolts for Pipe Clamp Connections to Posts
Nuts	A 563	Hex Nuts for Pipe Clamp and Base Plate Connections
Washers	F 436	Flat Washers for Pipe Clamp
Fabric Reinforced Elastomeric Pad	-	In accordance with Article 1028.01 of the Standard Specifications

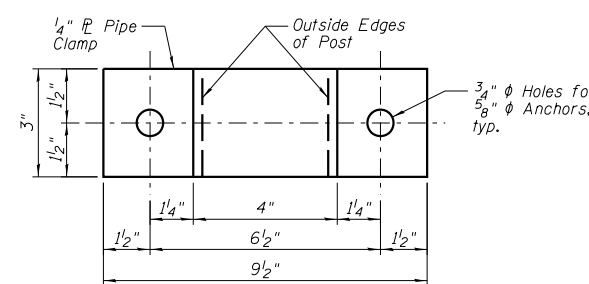
**BILL OF MATERIAL**

Item	Unit	Total
Bridge Fence Railing (Special)	Foot	792

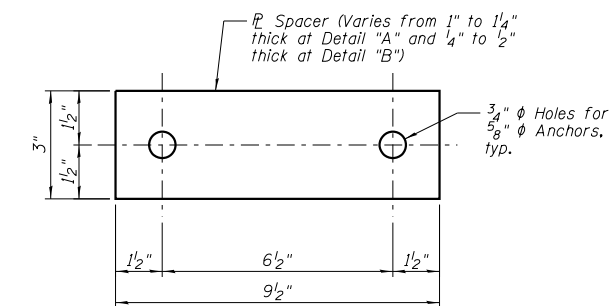
Note: Bill of Material is for two bridges.



**PIPE CLAMP CONNECTION DETAIL**



**PIPE CLAMP DETAIL**



**SPACER DETAIL**

Must be manufactured from an incompressive material (i.e., steel or aluminum)