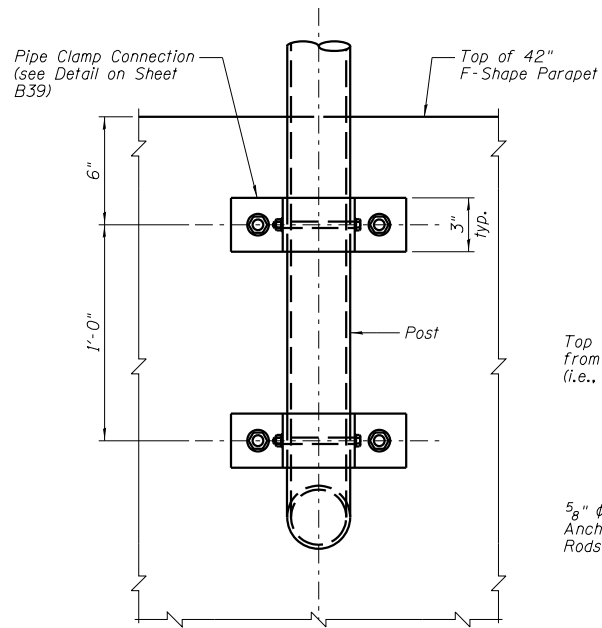
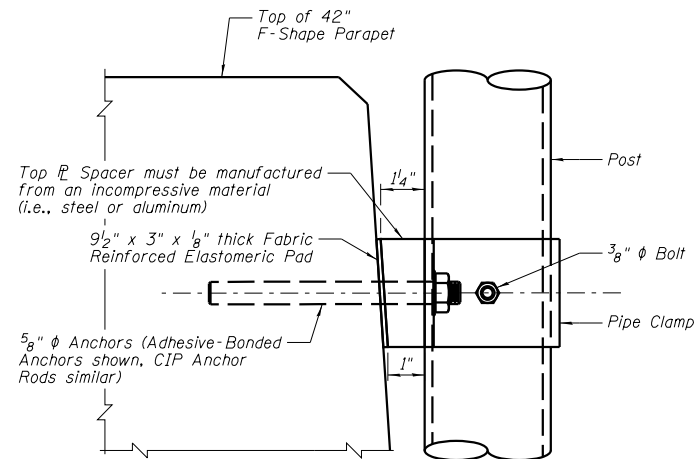


OUTSIDE ELEVATION OF PARAPET

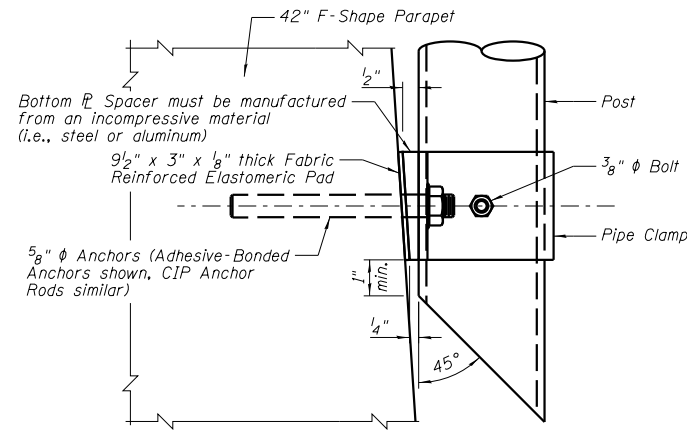
TYPICAL SECTION THRU PARAPET



VIEW A-A



DETAIL A



DETAIL B

FENCING NOTES:

FENCE INSTALLATION:
 Install posts plumb (within a tolerance of $\pm 1/2"$). Use shim plates as required to achieve plumb. The required quantity and thickness of shim plates will be determined in the field. Install chain link fence in accordance with ASTM F 567 as applicable.
42" F-SHAPE PARAPET:
 See Superstructure Sheets for 42" F-Shape Parapet details.
LIMITS OF FENCING:
 Limits of fencing are from Back of Abutment to Back of Abutment.
PAYMENT:
 Payment will be made under Bridge Fence Railing (Special). Payment includes posts, horizontal and expansion rails, brace rails and bands, rail ends, combination rail ends, boulevard clamps, chain link fabric, tension wire, ties, hog rings, tension bars and bands, post and loop caps, pipe clamps, base plates anchor rods, bolts, nuts, washers, shim plates, spacers, neoprene pads, miscellaneous fence fittings and hardware and all incidental materials and labor required to complete installation of the fence.

POST ATTACHMENT NOTES:

ANCHOR RODS, NUTS AND WASHERS:
 After the nuts have been tightened, distort the Anchor Rod threads to prevent removal of the nuts. Coat distorted threads and exposed trimmed ends of anchors with a galvanizing compound in accordance with Article 509.05 of the Standard Specifications.
COATINGS:
 Hot-dip galvanize all Nuts, Washers, Bolts, CIP Anchor Rods, Adhesive Anchors and Fence Framework (Posts, Internal Sleeves, Shim Plates, Base Plates, Pipe Clamps and Spacers) in accordance with Article 506.04 of the Standard Specifications. Hot-dip galvanize Fence Framework after fabrication.
ADHESIVE-BONDED ANCHORS AND DOWELS:
 Adhesive Bonding Material Systems for Anchors and Dowels will comply with Article 509.06 of the Standard Specifications. Embedment shall be according to the manufacturer's specifications. Cutting of reinforcing steel is permitted for drilled hole installation.
WELDING:
 All welding will be in accordance with the American Welding Society Structural Welding Code (Steel) ANSI/AWS D1.1 (current edition). Weld metal will be E60XX or E70XX. Nondestructive testing of welds is not required.