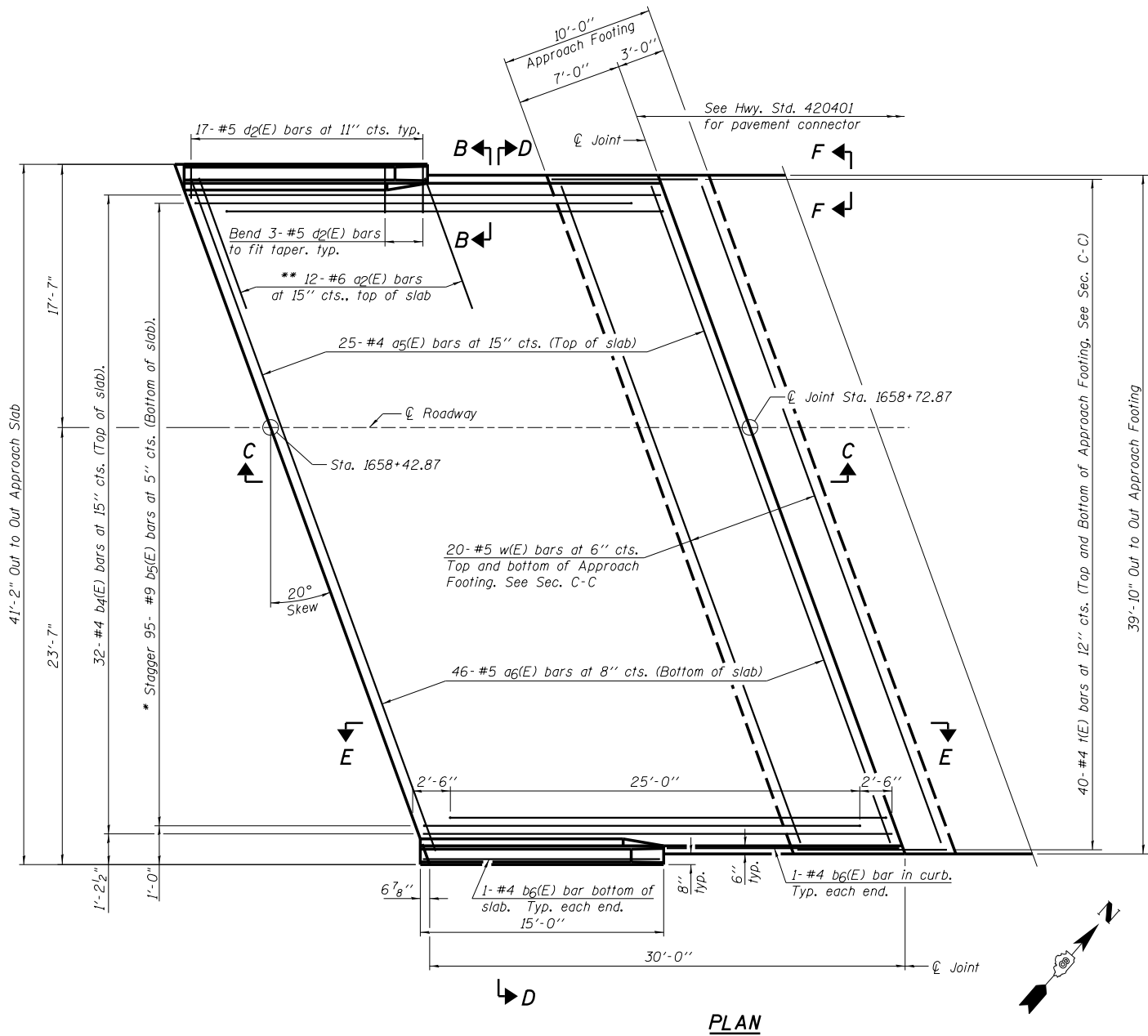


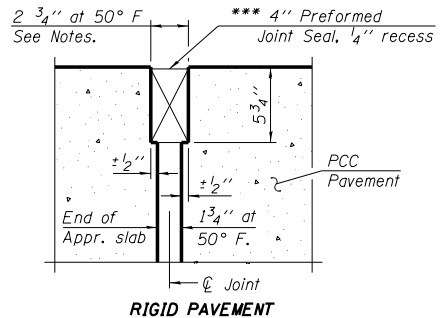
PLAN

* Tilt #9 b5(E) bars as required to maintain clearance.
 ** Space between a5(E) bars, typ. each parapet.



PLAN

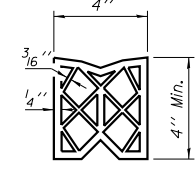
* Tilt #9 b5(E) bars as required to maintain clearance.
 ** Space between a5(E) bars, typ. each parapet.



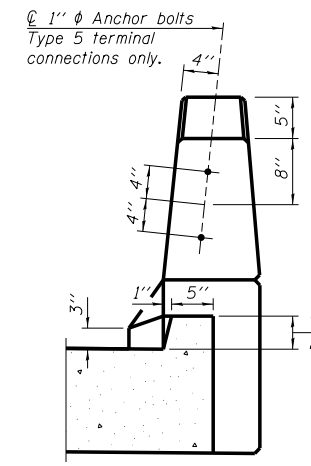
RIGID PAVEMENT

DETAIL A

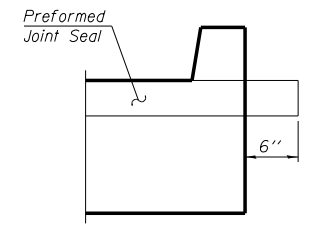
*** Cost included with Concrete Superstructure.



PREFORMED JOINT SEAL



VIEW B-B



VIEW F-F

NOTES:

- 1.) See sheet B18 for Sections C-C & D-D and View E-E. a5(E) and a6(E) bar spacings measured along \bar{C} Rdwy.
- 2.) The joint opening shall be determined per Article 520.04 except that on jointless structures, the distance described as the bridge length between the nearest fixed bearings each way from the joint shall be taken as half the bridge length plus the approach slab length. The minimum dimension shall be 1/2" for installation purposes.

DESIGNED - TCR	REVISED - 02/06/13
CHECKED - JML	REVISED
DRAWN - JWK/DJM	REVISED
CHECKED - MSW	REVISED
DATE - 12/10/12	

F.A.P. RTE.	SECTION	COUNTY	TOTAL SHEETS	SHEET NO.
788	520-1-2HBV-1	ST. CLAIR	237	152
CONTRACT NO. 76848				
ILLINOIS FED. AID PROJECT				